

denver



WCL-8040

denver.eu

01-12-2022



FR

Cet appareil
est recyclable

À DÉPOSER
EN MAGASIN



À DÉPOSER
EN DÉCHÈTERIE



OU

Points de collecte sur www.quefairedemesdechets.fr
Privilégiez la réparation ou le don de votre appareil !

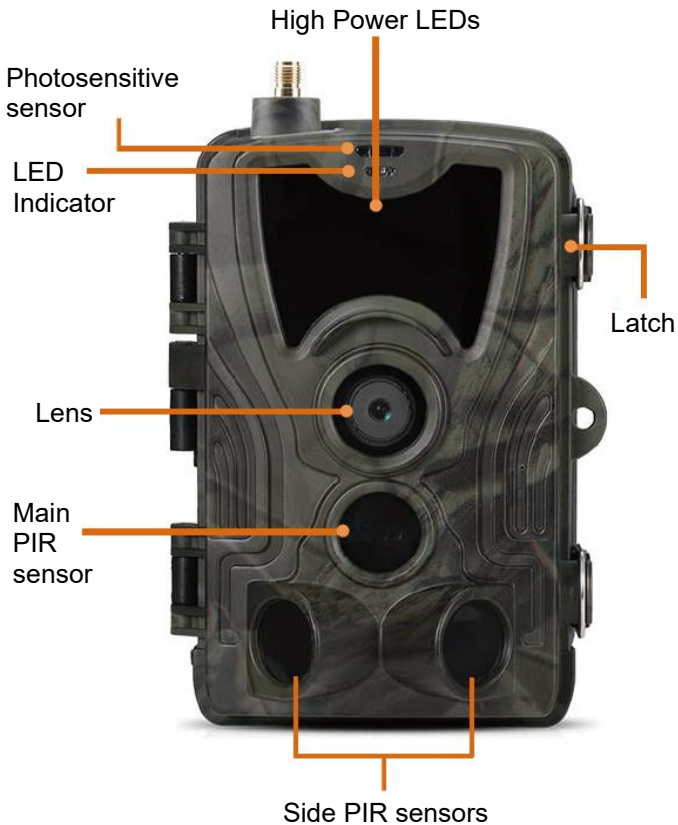
Safety information

Please read the safety instructions carefully before using the product for the first time and keep the instructions for future reference.

1. This product is not a toy. Keep it out of reach of children.
2. Keep product out of the reach of children and pets to avoid chewing and swallowing.
3. Never use old and new batteries or different types of batteries together in main unit. Remove the batteries when you are not using the device for a longer period of time. Check the polarity (+/-) of the batteries when inserting them in the product. Wrong positioning can cause an explosion. Batteries are not included.
4. Product operating and storage temperature is from -20 degrees Celsius to 40 degrees Celsius. Under and over this temperature might affect the function.
5. Never open the product. Do not touch the inside electronics, or you may get an electric shock. Repairs or service should only be performed by qualified personnel.
6. Do not expose to heat or direct sunlight!
7. Do not use non-original accessories together with the product as this can make the product functionality abnormal.

Specifications

Photo Resolution	30MP/24MP/20MP/16MP
Video Resolution	2K/30fps (H.265), 1080P/720P/VGA
LED	6*3W High Power LED, 940nm
Trigger Time	0.3s
Waterproof	IP65
Detection Angle	Up to 120°
Photo Transmission	Yes
Video Transmission	Yes
Date&Time Stamp	Yes
Power Supply Type	Battery/External
Battery Type	AA Battery
Working Voltage	DC 9V-12V
Memory	MicroSD card up to 256GB
Standby Time	Up to 3 months
Photo Format	JPEG
Video Format	AVI
Screen Size	2.0 inches
Dimensions	138 x 90 x 86 mm
Weight	0.38 kg
Accessories	Antenna, Belt, USB Cable, Tweezers



Color Display Screen
Setup Buttons

8*AA Battery Depot



Open the battery cover, insert 8pcs AA batteries by observing the positive and negative polarity signs, then close the battery cover to resist water and dust.

Or you can use an external power supply, a 9-12V adapter.



APP Download

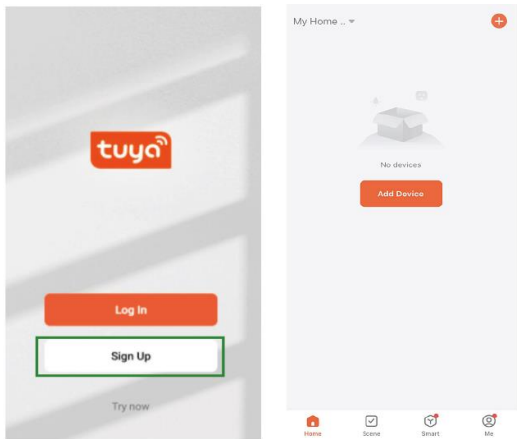
1. Scan the QR code to download the APP.



2. Searching for TUYA Smart in App Store for iOS and Google Play for Android.

Register and log in

Open the APP and create an account by clicking on “Sign Up”, enter the registration screen and fill out the requested information such as phone number or email. Complete the registration and log in to the APP.

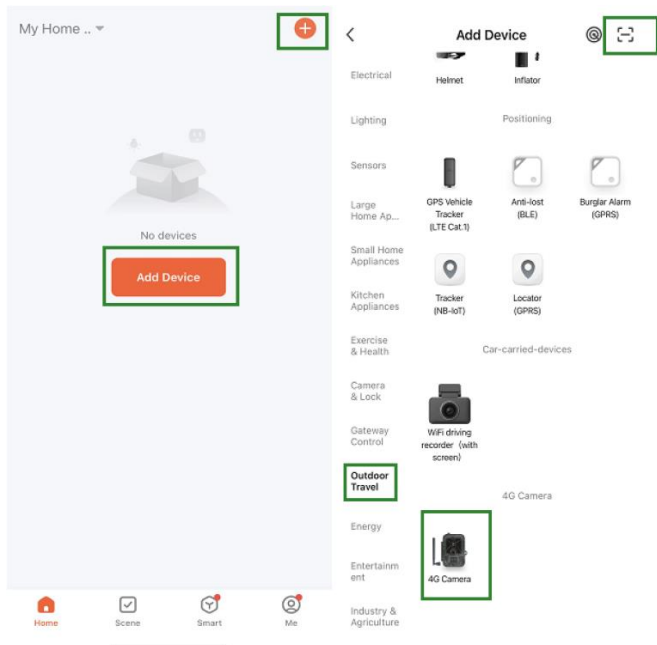


Add device

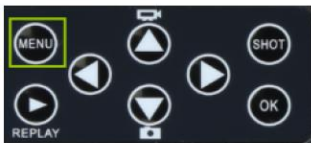
Before adding the device make sure to turn on the product and set it to “test” mode. Thereafter, insert a SIM card and SD card before entering the connection stage in the APP. The Camera will be ready to be added when “Cloud” and “signal” icons appear on the screen as shown in the picture below.



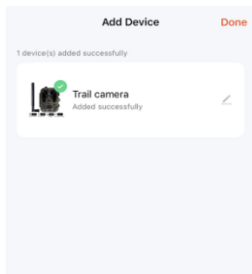
In the Tuya app tap Add Device or the + button in upper right corner. Then go to Outdoor Travel and find the 4G Camera or tap the Scan icon in top right corner.



On your camera, press the menu button and enter “Network”. Choose “Device ID” and a QR code will appear. Scan the QR code with the Tuya Smart App, and the product will connect.

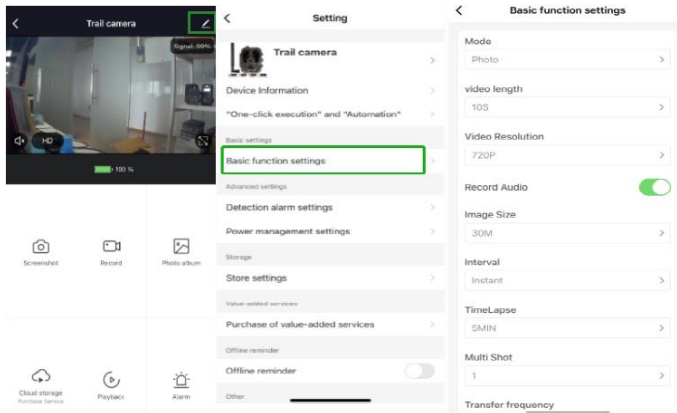


When the product is connected you will see “Added successfully” as shown in the picture below. Afterwards set the camera from “test” mode to “on” mode and the camera is ready for use.



Setting

In the Tuya APP, click on the device and enter the camera control/preview interface to see the settings. Here you have 5 main settings in the setting menu which will be described below.



Basic function settings

Set up the camera's basic functions according to your preference. These settings are available: "Mode", "Video length", "Video resolution", "Audio recording", "Image size", "interval", "time lapse", "multi shot" and "transfer frequency".

Detection alarm settings

For setting up the alarm functions you have these settings: “Motion detection alarm” ON/OFF and “alarm sensitivity level” where you can adjust the sensitivity for the camera.

Power management

Information about battery level.

Storage

Information about internal SD card storage capacity.

Purchase of value-added services

Ability to buy cloud storage.

Video and pictures

Playback function

Will show you video recording when motion is detected depending on mode setting.

Pictures

When the camera is activated and “Mode” setting is set for taking pictures, go to Tuya smart app home page and tap the “Me” icon and “Message center” thereafter. Then pictures will be shown.

Notifications

When the camera is activated, you will receive notifications that it has been activated and either video or picture will be available.

SIM and SD cards

To get the full use of the camera both SIM card and SD card are needed.

SIM card

For using the product you need a standard size (the large one) 4G SIM card. Make sure there is no PIN code on the SIM card.

SD card

The camera supports microSD cards up to 256GB. It needs to be formatted in FAT32.

Please notice - All products are subject to change without any notice. We take reservations for errors and omissions in the manual.

ALL RIGHTS RESERVED, COPYRIGHT DENVER A/S



denver.eu



Electric and electronic equipment contains materials, components and substances that can be hazardous to your health and the environment, if the waste material (discarded electric and electronic equipment) is not handled correctly.

Electric and electronic equipment is marked with the crossed out trash can symbol, seen above. This symbol signifies that electric and electronic equipment should not be disposed of with other household waste, but should be disposed of separately.

All cities have established collection points, where electric and electronic equipment can either be submitted free of charge at recycling stations and other collection sites, or be collected from the households. Additional information is available at the technical department of your city.

Hereby, Denver A/S declares that the radio equipment type WCL-8040 is in compliance with Directive 2014/53/EU. The full text of the EU declaration of conformity is available at the following internet address: denver.eu and then click the search ICON on topline of website. Write model number: WCL-8040. Now enter product page, and RED directive is found under downloads/other downloads.
Operating Frequency Range:

Max Output Power:

DENVER A/S

Omega 5A, Soeften

DK-8382 Hinnerup

Denmark

www.facebook.com/denver.eu