



USER'S MANUAL

EBO-635L

www.denver.eu



FR
Cet appareil et
ses accessoires
sont recyclables

À DÉPOSER
EN MAGASIN



À DÉPOSER
EN DÉCHÈTERIE



ou

Points de collecte sur www.quefairedemesdechets.fr
Privilégiez la réparation ou le don de votre appareil !

USER'S MANUAL

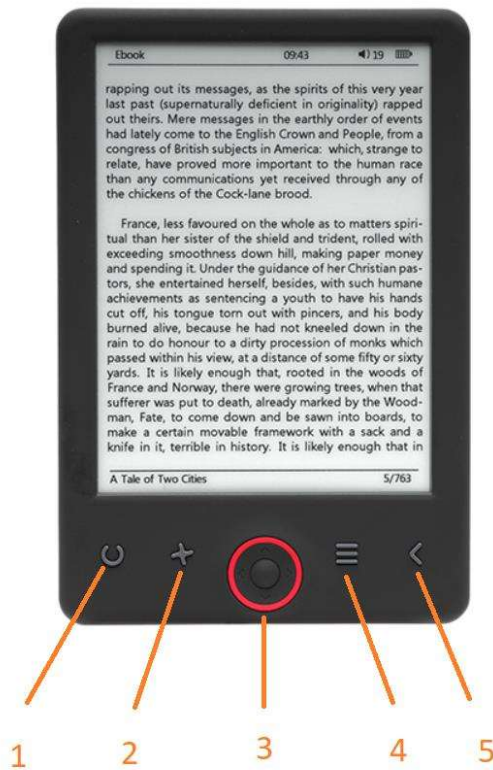
EBO-635L

Safety information

Please read the safety instructions carefully before using the product for the first time and keep the instructions for future reference.

1. This product is not a toy. Keep it out of reach of children.
2. Keep product out of the reach of children and pets to avoid chewing and swallowing.
3. Product operating and storage temperature is from 0 degree Celsius to 40 degree Celsius. Under and over this temperature might affect the functions.
4. Never open the product. Repairs or service should only be performed by qualified personnel.
5. Do not expose to heat, water, moisture, direct sunlight!
6. The unit is not waterproof. If water or foreign objects enter the unit, it may result in fire or electric shock. If water or a foreign object enters the unit, stop use immediately.

Introduction



1. Short press light on/off
Long press brightness level selection
2. Text direction
3. Navigation/OK buttons
4. Menu button
5. Back button



1. USB cable connection for charging and transferring files.
2. MicroSD card reader.
3. Power ON / Power OFF

Configuration and use

Turn ON / Turn OFF

Hold down the power button for 5 seconds

Charge the Ebook reader

You must first charge it for 8 hours before its first use. When the battery is low, charge it by connecting the supplied USB cable between the PC and Ebook reader. Do charge it by power adapter.

Copy files to the ebook reader

Connect the ebook reader to the PC using the supplied USB cable. The device will act like USB storage device.

Basic concepts

Use the **Navigation** buttons to scroll to the item you want from the list.

Press the **OK** button to confirm the selection.

Press the **Menu** button to open the options menu.

Press the **Back** button to cancel selection or return to previous menu or press repeatedly to return to the main menu.

Home screen

The recently read section displays the 3 most recently opened e-books. The newly added section displays the 4 last added e-books.

Library

Enter the Library section to display all e-books on the reader (both in the internal memory and the microSD if inserted). On the right hand side of the title, the file's format is displayed. In the Library submenu, the user can display the list of favorite e-books, search for books, sort by title/author/recently read/newly added and choose how to display files (list or thumbnails — cover).

1.Submenu while reading

The options submenu can be opened while reading an e-book. Press the Menu button while an e-book file is currently opened to display possible options. Please note, the reading menu options are different when reading e-books in different formats, as not every option is available for every file format.

- 1.1.Add bookmark — add a bookmark in the book you are reading.
- 1.2.Bookmarks — displays saved bookmarks.
- 1.3.Table of contents — displays table of contents, if available; (not available in .txt file format).
- 1.4.Add to favorites — add currently read book to the favorite list.
- 1.5.Go to page — choose a page to jump to.
- 1.6.Search — search for particular words in the currently read book.
- 1.7.Zoom size — zoom in/out on the file (only available in .pdf file format).
- 1.8.Font size — increase/decrease the font size of the currently read text; (not available in .pdf file format).
- 1.9.Font type — change the font type of the text (only available in .txt/.html/.fb2/.rtf/.mobi file formats).
- 1.10.Line spacing — change spacing between lines (only available in .txt/.html/.fb2/. rtf/.mobi file formats).
- 1.11.Margin — change the margins of the book.
- 1.12.Text only — the user can change between displaying file in .pdf format in its original form or as a text only (only available in .pdf format).
- 1.13.Rotate screen — rotate screen 90° clockwise or counterclockwise.
- 1.14.Invert colors — invert display colors (by default, the background is white and the letters are black; when inverted, the background is black and the letters are white); (not available in .pdf file format).
- 1.15.Auto turning — enable automatic page turning: 10 seconds/20 seconds/30 seconds/1 minute/2 minutes.
- 1.16.Refresh mode — select the screen's refresh frequency settings: after each page/every 3 pages/every 5 pages.
- 1.17.About book — displays information about the currently opened e-book: title, author, publisher and format (if available).
- 1.18.Exit — exit submenu (the user can also exit by pressing the Previous button).
- 1.19.Set link on — displays endnotes list (if available); (option only available for PDF, ePUB, mobi file formats).
To display endnotes included in an e-book:
 - 1.19.1Go to the page where the endnote anchor is in the main text, press the Menu button to enter the submenu and enable the Set Link On option. A mouse icon will appear in the upper right corner of the screen, which means the function is enabled.
 - 1.19.2Press the OK button, the reader will display the list of endnotes.
 - 1.19.3To move to another endnote, use the “Up”/“Down” buttons and press the “OK” button. The reader will jump to the page containing the selected note. To go back to the list of endnotes, press the “OK” button.
 - 1.19.4.Press the “Previous” button to go back to the main text (the cursor icon will disappear, which means the function is disabled).

2.Fonts

The device does not guarantee the proper display of every file on this device. Correct display of fonts, especially of diacritical marks, on this reader is solely dependent on the e-book file format and whether it has been prepared to be displayed on an e-book reader. For files in .txt format, we suggest to make sure that the file is in UTF format for an optimal display of fonts. When reading e-books in .rtf/.txt/.fb2/.mobi formats in a language with diacritical marks, we suggest not to use the default font for an optimal display of fonts.

Pictures

Open the section to display all pictures (both in the internal memory and the microSD card if inserted). To view the available functions when opening a picture, press the Menu button to open the picture submenu. The first page of the submenu offers the following options: setting the picture as screensaver, restoring default screensaver, setting the picture as idle screen, restoring default idle screen, rotating the picture, zooming in/out. Press the "Left"/"Right" buttons to display the second page of the submenu, where you can set the slideshow interval: off/5 sec/10 sec/20 sec/30 sec/1 minute, as well as display information about the picture (name and format), and exit the submenu.

Explorer

Enter the Explorer tab to display the reader's file browser. While in the memory subfolder, press the "Menu" button to display a list of additional options: search, delete and view the content of the internal or external memory.

Search

Enter the Search tab. The screen will display the search menu.

Use the directional buttons to enter a search phrase, press DONE and press OK to begin the search. The device will display all available e-books containing the search term. You can search for files by file name and author.

Other

The Other section consists of 2 submenus: Calendar and Game tabs.

1. Calendar

Enter this tab to display the calendar. The calendar will open at the current month, with the current day marked (remember to set the correct date in Settings).

2. Game

Two games are preinstalled on the reader: Sokoban and Jigsaw.

Settings

1. Refresh mode

Enter this tab to set the display's refresh frequency: after each page/every 3 pages/every 5 pages.

2. Power settings

Enter this tab to set the auto shutdown time and standby time.

2.1. Auto shutdown

The user can either disable the auto shutdown function or set it to 1/2/3/4 hours (the device will automatically turn off after set time to save energy). Note: the user can customize the idle screen according to his or her needs: open a preloaded picture, press the Menu button and select "Set as idle screen".

2.2. Standby

Disable or select 5/10/15/30 minutes/1 hour. When enabled, the function switches the reader to standby mode to save energy. Note: the user can customize the screensaver according to his or her needs: open a preloaded picture, press the "Menu" button and select "Set as screensaver".

3. Date & time

On the Home screen, the week, day and date appear in the lower left corner of the display and the time appears in the lower right corner. When reading a book, the time is displayed in the upper right corner of the screen. To change the date and time, enter Settings, go to Date & Time and enter the corresponding tab. In the time settings, use the "Left"/"Right" buttons to switch between hour/minute/format and the "Up"/"Down" buttons to change the digits and select between 24h format/am/pm. In the date settings, use "Left"/"Right" buttons to switch between day (DD)/month (MM)/year (YY) and the "Up"/"Down" buttons to change the digits.

4. Language setting

In order to change the language, go to Settings and select Language. A pop up window with available languages will appear. Choose the appropriate language and press the “OK” button to confirm.

5. Format device

The user can format the device in this tab. Please keep in mind that during formatting, all data saved on the internal memory will be deleted! Back up your important data! We suggest to remove the memory card from the device before formatting it.

6. Default settings

In order to restore the reader's default settings, enter this tab, select OK and press the “OK” button to confirm. The default settings will be restored, and a language selection prompt will be displayed on the screen. Device information. Enter this tab to display software version, device model number, used and total capacity of the internal memory as well as used and total capacity of the external memory.

7. Device information

Enter this tab to display software version, device model number, used and total capacity of the internal memory as well as used and total capacity of the external memory.

Data transfer

There are two ways to transfer files:

- 1.** Insert a microSD card with preloaded files into the device's memory slot.
- 2.** Connect the reader to a PC with the USB cable provided. A prompt indicating successful USB connection will be displayed on the screen. You may now copy files to the device or memory card. Note: Do not disconnect the reader from the computer during data transfer, as you could damage the device's memory.

Reset

In case of the reader being e.g. frozen, the user can reset the device. Insert a thin tool into the reset hole at the back of the device, and press and hold the button to restart the device.

Transferring DRM copy protected Ebooks to your DENVER EBO-635L

DENVER EBO-635L can read DRM protected Ebooks. To do this you need transfer from a PC via Adobe Digital Editions.

Transferring via Adobe Digital Editions

Download the program from this link: <http://www.adobe.com/dk/products/digital-editions/download.html>

Choose if you want to download for Windows or Macintosh.

Adobe Digital Editions Home / D

[Oversigt](#) [Features](#) [Tech specs](#) [FAQ](#) [Release Notes](#) [Download](#)

Adobe Digital Editions 3.0 Installers

Locate your preferred platform and click on it to download the installer. Then i Editions.

Download Digital Edition 3.0 [Macintosh \(16.9 MB\)](#)

Download Digital Edition 3.0 [Windows \(5.9 MB\)](#)

Additional Downloads

Getting Started with Adobe Digital Editions eBook

The *Getting Started* eBook is pre-installed with Adobe Digital Editions 3.0; how admin user). If it is not installed or if you happen to remove it, you can downlo

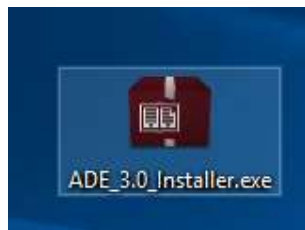
Download [Getting Started with Adobe Digital Editions \(EPUB, 55 KB\)](#)

Download Digital Edition 2.0.1 [here](#)

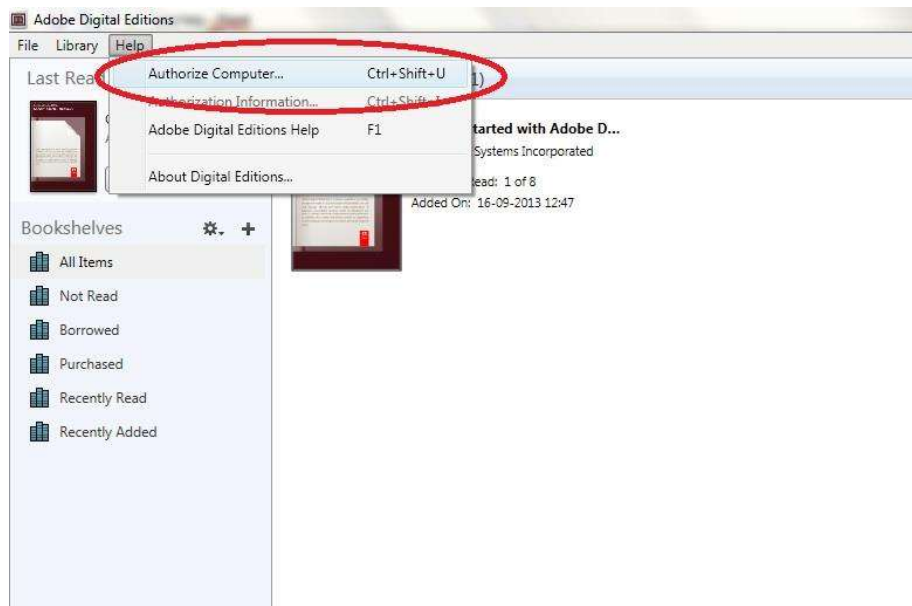
Sample eBook Library

Download [sample eBooks](#) for viewing in Digital Editions

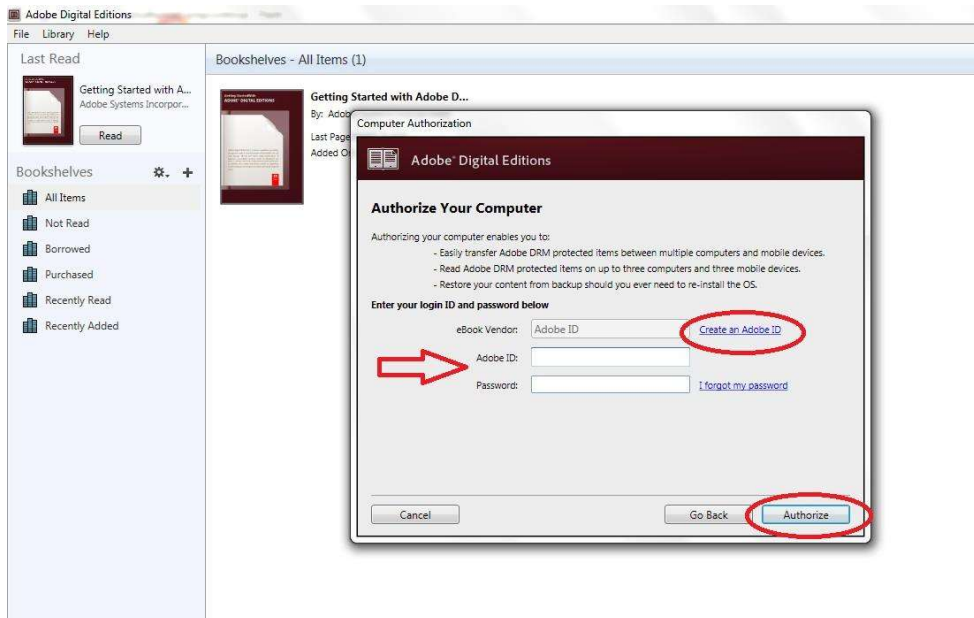
1. Now you download the install file to your PC/Mac. Please make sure to save it a place you can find again. (Eg. in "Downloads" or on "Desktop")
2. Double click on the installation file to start the installation of Adobe Digital Editions.



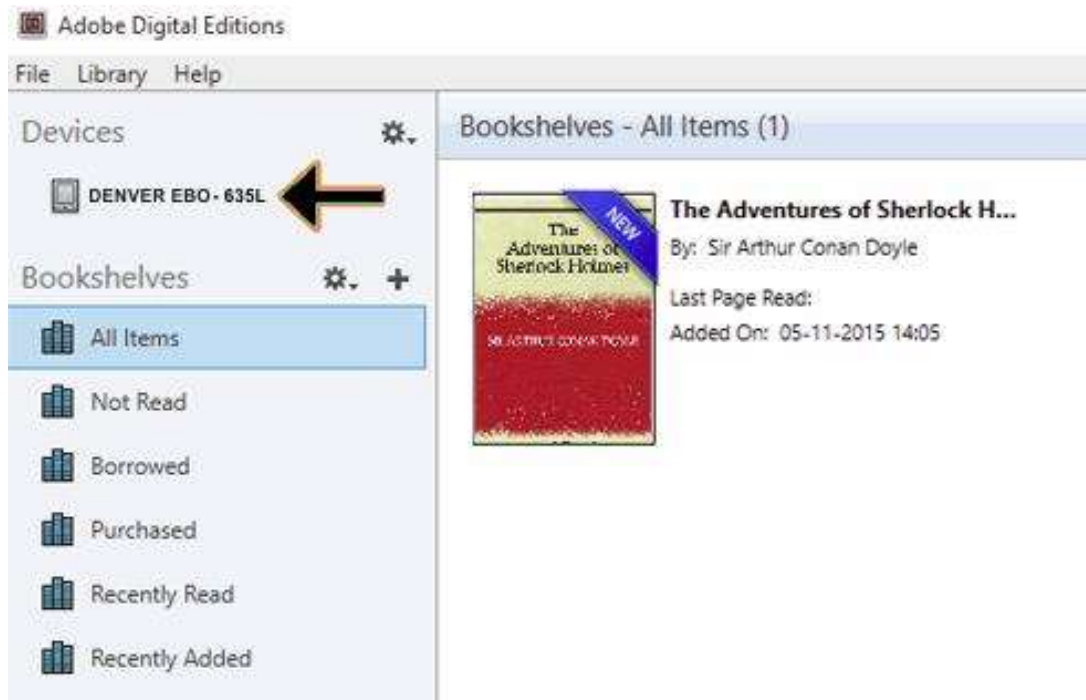
3. When the installation has been completed you will have a shortcut for Adobe Digital Editions on your desk top. Double click on the icon to open the program.
4. Authorize Adobe ID
5. Open Adobe Digital Editions and click "Help" and choose "Authorize Computer"



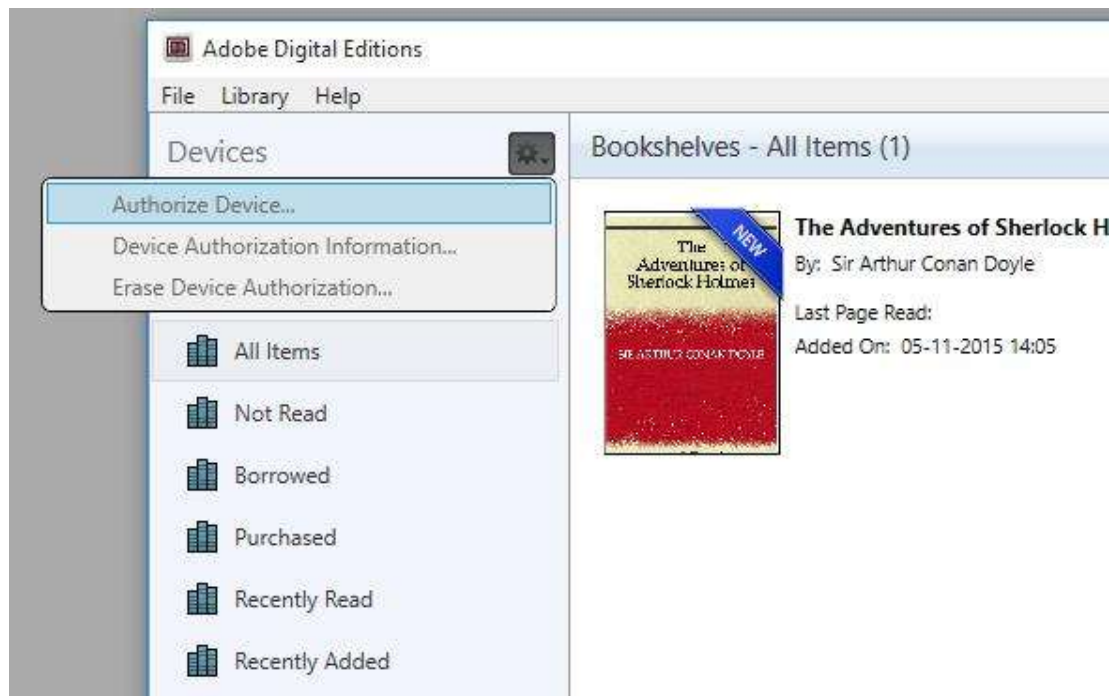
6. If you already have ADOBE ID. You just need to fill out user name and password. If you don't have this, then you can create this by choosing. "Create an Adobe ID".
7. Click on "Authorize" when you have entered the required information.



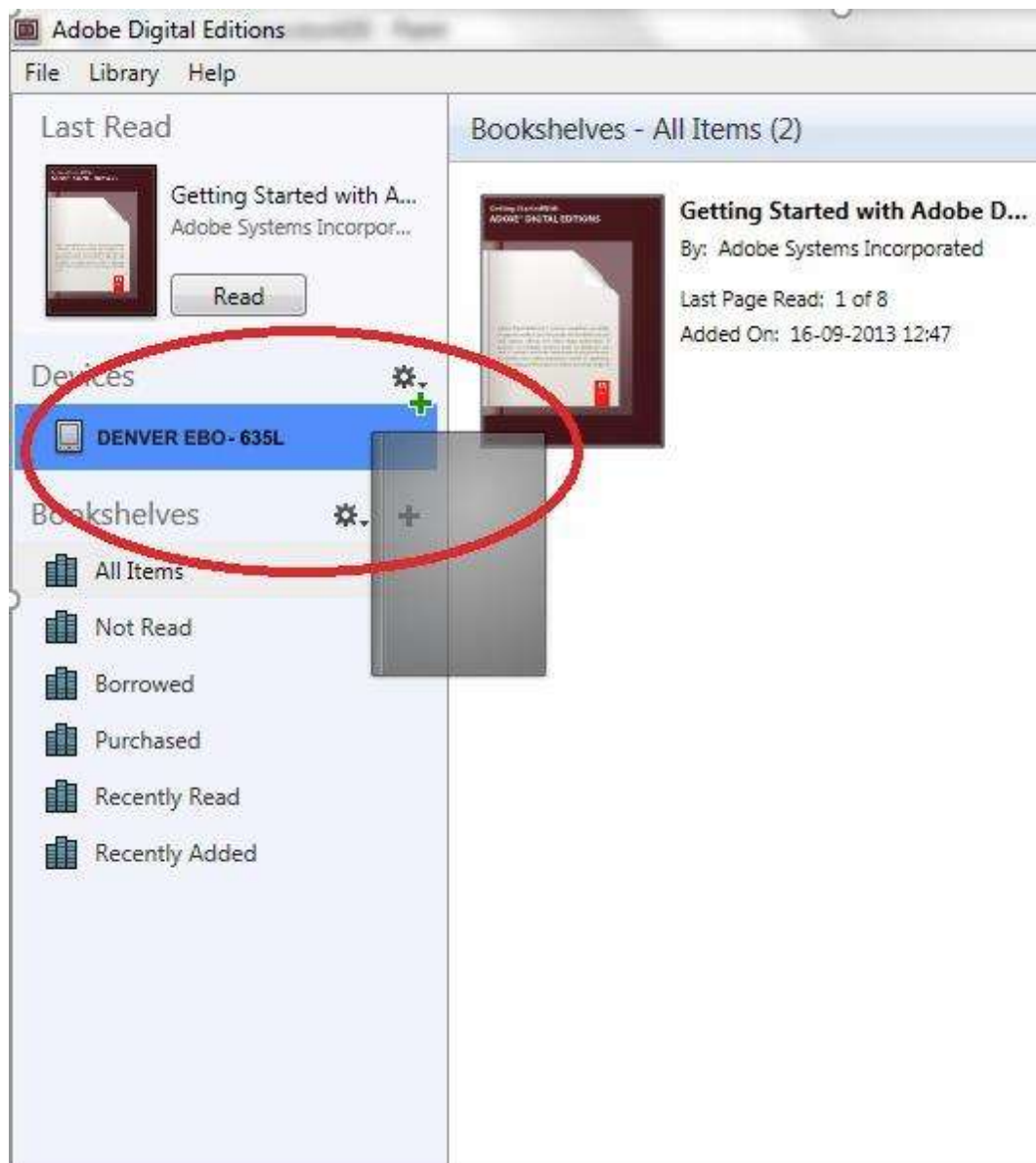
8. Now Adobe Digital Editions is authorized.
9. Please make sure that your DENVER EBO-635L is powered on and then connect USB cable between Ebook reader and your PC and press OK when it shows a message on the screen. Now a new icon for DENVER EBO-635L is visible on left side of Adobe Digital Editions user menu.



10. Sometimes it can be necessary to authorize DENVER EBO-635L. This can be done by clicking on the Gear icon right beside the Devices and choose "authorize device".



11. Now you can add the desired ebooks by clicking "File" and choose "Add to Library". Now the ebook can be seen in the "Library" overview.
12. Now you drag the Ebook to Denver EBO-635L and notice there is a small green +. This is an indication that you can drop the Ebook. Now the Ebook is copied to your DENVER EBO-635L device.



13. When you have copied all the books you can disconnect the USB cable and you are ready to read the book.

Please notice - All products are subject to change without any notice. We take reservations for errors and omissions in the manual.

ALL RIGHTS RESERVED, COPYRIGHT DENVER A/S



Electric and electronic equipment and included batteries contains materials, components and substances that can be hazardous to your health and the environment, if the waste material (discarded electric and electronic equipment and batteries) is not handled correctly.

Electric and electronic equipment and batteries is marked with the crossed out trash can symbol, seen below. This symbol signifies that electric and electronic equipment and batteries should not be disposed of with other household waste, but should be disposed of separately.

As the end user it is important that you submit your used batteries to the appropriate and designated facility. In this manner you make sure that the batteries are recycled in accordance with legislature and will not harm the environment.

All cities have established collection points, where electric and electronic equipment and batteries can either be submitted free of charge at recycling stations and other collection sites, or be collected from the households. Additional information is available at the technical department of your city.

DENVER A/S

Omega 5A, Soeften

DK-8382 Hinnerup

Denmark

www.facebook.com/denver.eu