



VPL-120

Suitcase Turntable Player



Instruction Manual

**READ INSTRUCTIONS CAREFULLY BEFORE USE AND STORE
IN A SAFE PLACE FOR FUTURE REFERENCE**

If the user manual is not printed in your local language, then please enter our website to see if it is found online under the model you have. The website address is: www.denver.eu



FR

Cet appareil et
ses cordons sont
recyclables

À DÉPOSER
EN MAGASIN



OU

À DÉPOSER
EN DÉCHÈTERIE



Points de collecte sur www.quefairedemesdechets.fr
Privilégiez la réparation ou le don de votre appareil !

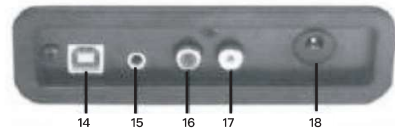
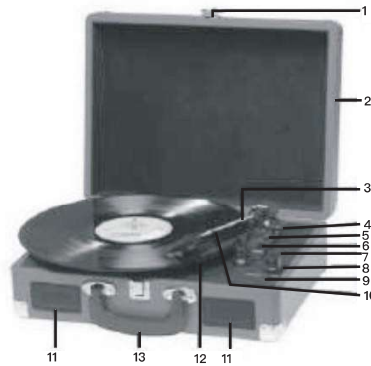
SAFETY INFORMATION

Please read the safety instructions carefully before using the product for the first time and keep the instructions for future reference.

1. This product is not a toy. Keep it out of reach of children.
2. Keep product out of the reach of children and pets to avoid chewing and swallowing.
3. Product operating and storage temperature is from 0 degree Celsius to 40 degree Celsius. Under and over this temperature might affect the function.
4. Never open the product. Touching the inside electrics can cause electric shock. Repairs or service should only be performed by qualified personnel.
5. Do not expose to heat, water, moisture, direct sunlight!
6. Please protect your ears against loud volume. Loud volume can damage your ears and risk in hearing loss.
7. The unit is not waterproof. If water or foreign objects enter the unit, it may result in fire or electric shock. If water or a foreign object enters the unit, stop use immediately.
8. Only charge with supplied Adaptor. The direct plug-in adapter is used as disconnect device, the disconnect device shall remain readily operable. So, make sure there is space around the power outlet for easy access.
9. Do not use non original accessories together with the product as this can make the product functionality abnormal.

DESCRIPTION

1. Lock catch
2. Dust cover
3. Adapter - Use this when playing 45rpm records with cut out centres.
4. Tone arm lift
5. Auto stop control
6. Speed selection - Three speed for choice: 33, 45, 78 rpm.
7. LED power indicator
8. Power switch / Volume control
9. Headphone jack
10. Tone arm
11. Speaker
12. Cartridge
13. Carrying handle
14. PC link connector
15. Aux in
16. Line out R channel
17. Line out L channel
18. DC power jack



- Red plug into R channel input.
- White plug into L channel input.

INITIAL SET-UP

MAINS CONNECTION

Ensure that the mains voltage of your home corresponds to the operating voltage of the unit. Your unit is ready to be connected to a mains voltage of 5V DC adaptor.

AMPLIFIER CONNECTION (if required)

Whilst you can listen to your new turntable using the built in speakers you may wish to connect it to your existing Hi Fi system. Connect the audio plugs to the Line input on your mixer or amplifier using an RCA cable (not supplied)

Playing a record

- Place the record of your choice on the turntable. If required, do not forget to place the adaptor on the record spindle.
- Choose the desired playing speed using the speed selection switch between 33, 45 and 78rpm.
- Turn on the Rotary Power Switch, note that this also controls volume.
- Release the tone arm lock.
- Raise the arm with your hand lightly.
- Place the stylus vertically over the first track of the record, the turntable will start turning automatically.
- Put down the stylus slowly on to the record to play.
- When a record comes to the end, the turntable will stop automatically if the auto-stop switch is in the ON position. If the switch is in the off position then it will keep revolving until the tone arm is returned to the tone arm rest.
- Lift up the tone arm and put it on the rest when finished.
- Replace the protective cap on the stylus and close the tone arm lock.
- Turn off power at mains.

INSTALLING THE SOFTWARE

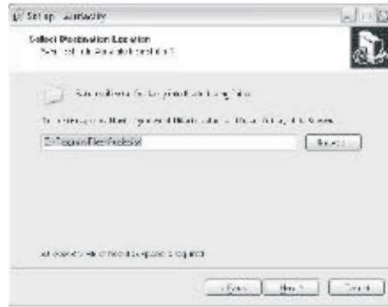
- Place the supplied CD into the drive of your computer, follow the instructions and the software will automatically install as follows:
- Click 'Next'
- Select 'I accept' option then click 'Next':



- Click 'Next':



- Here either select another location or click 'Next' to continue (recommended):



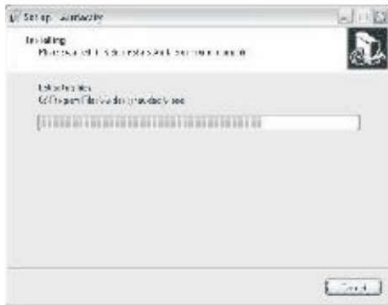
- Click 'Next' to continue:



- Click 'Install' to continue:



- The software will start to install:



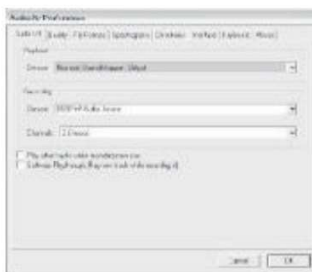
- Click on 'Finish' to complete the installation:



- Audacity should automatically start up, if not follow the next sequence:
- The Audacity icon will now be seen on the desktop, double click on it to start Audacity running, if an icon does not appear, go to the 'C' drive under 'My Computer', click on 'Program files' and then 'Audacity'. Right click on the 'orange ball wearing Headphones' icon and select 'Send to' then 'Desktop (create shortcut)'.


Using Audacity

- Plug the USB cable into the back of the unit and the other end into a spare USB port on your computer.
- Run the Audacity software by double clicking the Audacity icon.
- Before recording, click on Edit at the top of the main page; select Preferences at the bottom of the menu which will open up Preferences.
- At the recording part of the window open the Device menu by using the down arrow on the right hand side. Select the USB PnP Audio Device option from the menu. Also tick the box next to 'Software Play through (Play new track while recoding it)'.
- The lower box enables the number of recording channels to be set, 1 is Mono and 2 is Stereo, select the Stereo option.
- Click 'OK' once the options have been selected:

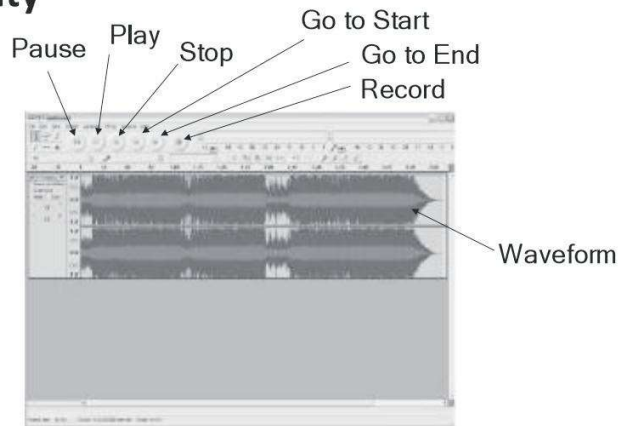


Preferences window

Recording to computer using Audacity

- Start the record playing as described above, and press Record  at the top of the Audacity window to start recording to the computer.

- Once recorded use the Transport controls at the top of the screen to, Go to start, Play, Record, Pause, Stop and Go to end of Wave form as below:



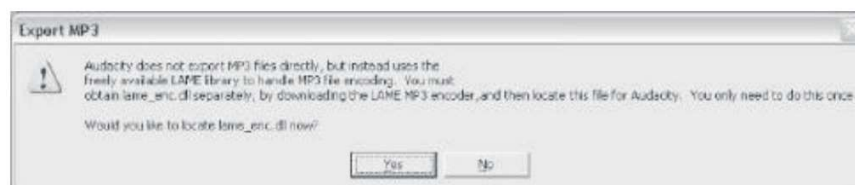
- Use the file, Edit, View, Project, Generate, Effect and Analyse menus to Save, Export and Manipulate your music.
- If the recording level requires adjustment, click on 'START', 'SETTINGS' and select control panel. Under Control Panel select 'SOUNDS and AUDIO DEVICES', click on the 'VOLUME' tab and select 'ADVANCED'.
- On the Master volume window select options at the top left hand corner, click on properties in the drop down menu.
- In the Properties window select "USB PnP Audio Device" from the drop down menu at the top. Click on "OK" to confirm the selection and a window will now appear with a control for the recording level. Move this control up if the recording is too quiet and down if the recording is too loud
- NOTE: the blue wave form should sit in the Audacity window such that the peaks of it stop short of the top and bottom
- Before editing your music, the recorded waveform will need to be highlighted.
- To highlight your wave form, click with the left mouse button on the left hand side of the waveform (under the L+R controls) and the waveform will go darker.
- At this point the whole waveform can be edited. However if only a section of the waveform needs to be edited (or saved) the section required can be highlighted by placing the mouse over the beginning of the section holding the left button down and dragging it right over the area required and releasing it when the end of the desired section is reached. This darkened section will now be the only audio that will be edited.
- Alternatively click on the EDIT menu at the top left and then click on SELECT then choose from: All (whole wave form), Start to Cursor or Cursor to end.
- NOTE: after recording to the Computer, the USB cable may have to be removed from the USB port in order to enable playback later from the Computer.

Exporting your music files (.WAV)

- Once you have recorded and edited your music, you will need to save your files to the computer. To do this, click on file and move down to Export as WAV tab.
- Click on this and you will promptly be asked for the file name of the music recorded which will be saved in the location shown. At this point either make a note of the folder where your music is saved or save it in a folder of your choice.
- This can either be an existing one or a new folder.

Exporting your music files (.Mp3)

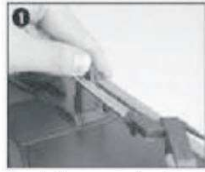
- Once you have recorded and edited your music, you will need to save your files to the computer. To do this click on file and move down to Export as Mp3 tab.
- Click on this and you will promptly be asked for the file name of the music recorded which will be saved in the location shown. At this point either make a note of the folder where your music is saved or save it in a folder of your choice.
- This can be either an existing one or a new folder.
- NOTE: In order to activate the Export to Mp3 feature, it will be necessary to copy a file named lame_enc.dll from the installation CD and paste it in the AUDACITY folder that contains the software on the hard drive that was copied earlier from the CD. The software will automatically detect this file and exporting as an mp3 will now be possible.



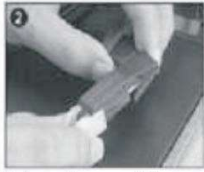
MAINTENANCE

REPLACING THE STYLUS

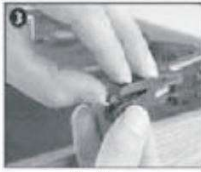
- Refer to the figures 1-8



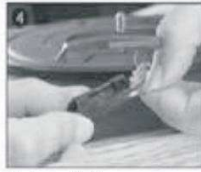
1 push the arm lock to release the tone-arm.



2 take off cap of the cartridge to expose the needle out.



3 separate the cartridge from the socket lightly.



4 take off the audio-line from the cartridges completely.



to fit a new one just in opposite deals, insert the audio-line accordingly, and install the cartridge to the socket lightly.

NOTE: Please exercise extreme care whilst performing this operation so as to avoid the tone arm and audio line wires from any damage.

INSTALLING A NEW STYLUS CARTRIDGE

- Refer to the figures 5 & 6



NOTES

We advise you to clean your records with an anti-static cloth to gain maximum enjoyment from them and to make them last.

We would also point out that for the same reason your stylus should be replaced periodically (approximately every 250 hours)

Dust the stylus from time to time using a very soft brush dipped in alcohol (brushing from back to front of the cartridge)

WHEN TRANSPORTING YOUR RECORD PLAYER DO NOT FORGET TO:

- Replace the protective cap on the stylus.
- Put the rest clip into the pick-up arm.

Please notice - All products are subject to change without any notice. We take reservations for errors and omissions in the manual.

| | |
|---|--|
| Manufacturer's name or trade mark, commercial registration number and address | Shenzhen Shi Guangkaiyuan Technology Ltd. 91440300053998927W 2 floor, 41 Tiansheng Road, Tianliao Village, Gongming Street, Guangming, Shenzhen, Guangdong, P.R.C. |
| Model identifier | GKYP50100050EU |
| Input voltage | 100-240V |
| Input AC frequency | 50/60Hz |
| Output voltage | 5.0V |
| Output current | 1.0A |
| Output power | 5.0W |
| Average active efficiency | 73.62% |
| Efficiency at low load (10%) | ... |
| No-load power consumption | 0.04W |

ALL RIGHTS RESERVED, COPYRIGHT DENVER A/S



Electric and electronic equipment contains materials, components and substances that can be hazardous to your health and the environment, if the waste material (discarded electric and electronic equipment) is not handled correctly.

Electric and electronic equipment is marked with the crossed out trash can symbol, seen below. This symbol signifies that electric and electronic equipment should not be disposed of with other household waste, but should be disposed of separately.

All cities have established collection points, where electric and electronic equipment can either be submitted free of charge at recycling stations and other collection sites, or be collected from the households. Additional information is available at the technical department of your city.

DENVER A/S
Omega 5A, Soeften
DK-8382 Hinnerup
Denmark
www.facebook.com/denver.eu

Contact

Nordics

Headquarter
DENVER A/S
Omega 5A, Soeften DK-
8382 Hinnerup Denmark

Phone: +45 86 22 51 00 (Push
“ 2” for support)

E-Mail
For technical questions,
please write to: support@denver.eu

For all other questions please
write to: intersales@denver.eu

Benelux/France

DENVER BENELUX B. V.
Barwoutswaarder 13C+D
3449 HE Woerden
The Netherlands

Phone: +31 348 420 029

E-Mail: support-nl@denver.eu

Spain/Portugal

DENVER SPAIN S.A
C/ Moscú, 1 Pol.Ind.Mas de Tous
46185 La Pobla de Vallbona
Valencia (Spain)

Spain
Phone: +34 960 046 883
Mail: serviciotecnico.denver@denver.eu

Portugal:
Phone: +35 1255 240 294
E-Mail: denver.service@satfiel.com

Germany

DENVER GmbH Service
Gutenbergstrasse 1
94036 Passau

Phone: +49 851 379 369 40

E-Mail
service-germany@denver.eu

Fairfixx GmbH
Repair and service
Rudolf-Diesel-Str. 3 TOR 2
53859 Niederkassel

(for TV, E-Mobility/Hoverboards/
Balanceboards, Smartphones & Tablets)

Tel.: +49 851 379 369 69
E-Mail: denver@fairfixx.de

Austria

Lurf Premium Service GmbH
Deutschstrasse 1
1230 Wien

Phone: +43 1 904 3085
E-Mail: denver@lurfservice.at

If your country is not listed above,
please write an email to
support@denver.eu



DENVER A/S
Omega 5A,
SoeftenDK-
8382
Hinnerup
Denmark
denver.eu