



VPR-250

10/2022



FR

Cet appareil et
ses cordons sont
recyclables

À DÉPOSER
EN MAGASIN



OU

À DÉPOSER
EN DÉCHÈTERIE





Points de collecte sur www.quefairedemesdechets.fr
Privilégiez la réparation ou le don de votre appareil !

Safety information

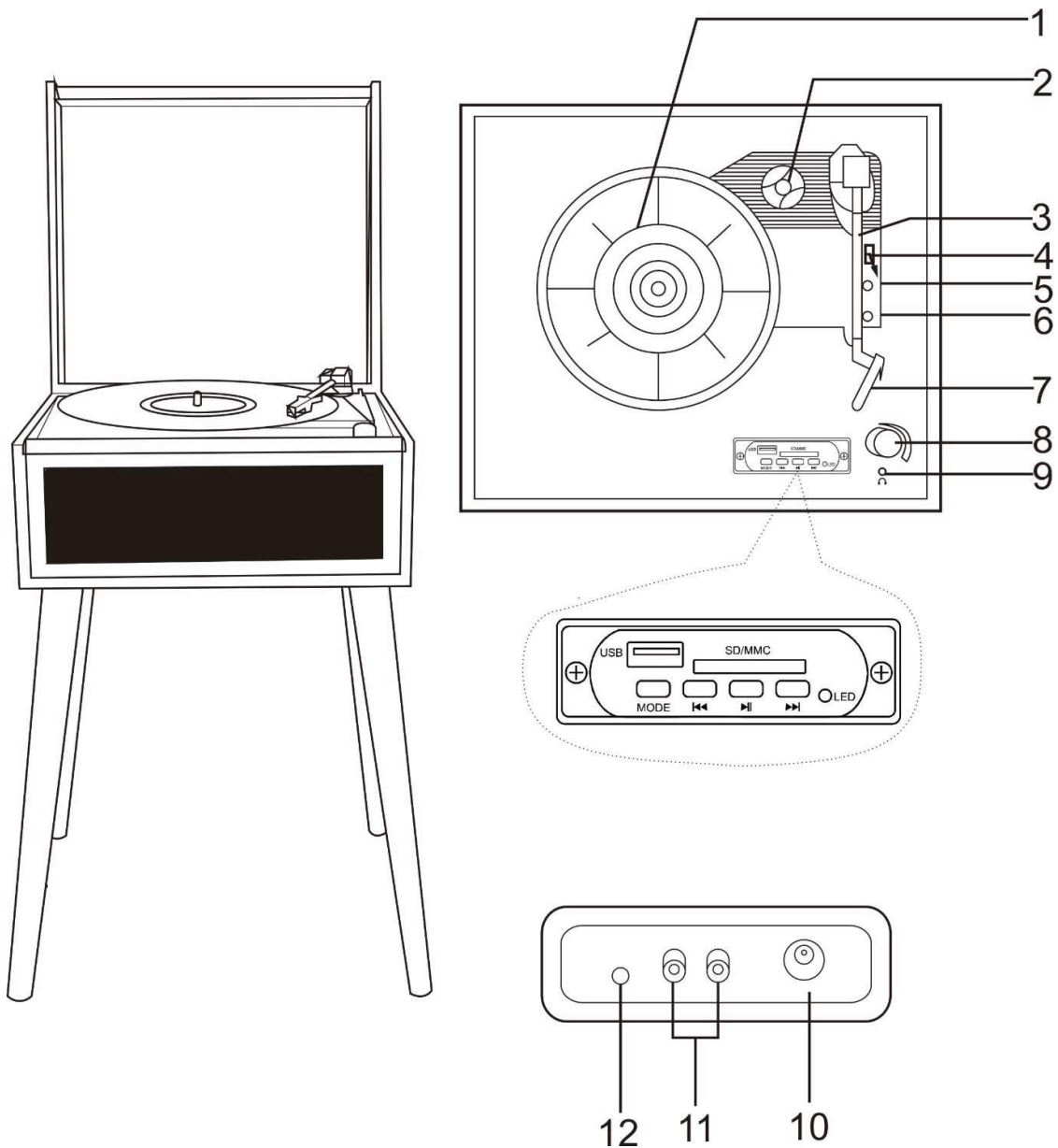
Please read the safety instructions carefully before using the product for the first time and keep the instructions for future reference.

TO PREVENT FIRE OR SHOCK HAZARD, DO NOT USE THIS PLUG WITH AN EXTENSION CORD, RECEPTACLE OR OTHER OUTLET UNLESS THE BLADES CAN BE FULLY INSERTED TO PREVENT BLADE EXPOSURE. TO PREVENT FIRE OR SHOCK HAZARD, DO NOT EXPOSE THIS APPLIANCE TO RAIN OR MOISTURE.

 <p>The lightning flash with arrowhead symbol within an equilateral triangle is intended to alert the user to the presence of uninsulated dangerous voltage within the product's enclosure that may be of sufficient magnitude to constitute a risk of electric shock to persons.</p>	<p>CAUTION</p> <p>RISK OF ELECTRIC SHOCK DO NOT OPEN</p> <p>CAUTION: TO REDUCE THE RISK OF ELECTRIC SHOCK. DO NOT REMOVE COVER (OR BACK). NO USER-SERVICEABLE PARTS INSIDE. REFER SERVICING TO QUALIFIED SERVICE PERSONEL.</p>	 <p>The exclamation point within an equilateral triangle is intended to alert the user to the presence of important operating and maintenance (servicing) instructions in the literature accompanying the appliance.</p>
---	---	--

- 1.This product is not a toy. Keep it out of reach of children.
- 2.Keep product out of the reach of children and pets to avoid chewing and swallowing.
- 3.Product operating and storage temperature is from 0 degree Celsius to 40 degree Celsius.
Under and over this temperature might affect the function.
- 4.Never open the product: the device may contain parts with deadly voltage.
- 5.Repairs or service should only be performed by qualified personnel.
- 6.The direct plug-in adapter is used as disconnect device,
the disconnect device shall remain readily operable.
So make sure there is space around the power outlet for easy access.
- 7.Do not expose to heat, water, moisture, direct sunlight!
- 8.Clean only with dry cloth.
- 9.Do not block any ventilation openings. Install in accordance with these instructions.

10. Do not install near any heat sources such as radiators, heat registers, stoves, or other apparatus (including amplifiers) that produce heat.
11. Protect the power cord from being walked on or pinched particularly at plugs, convenience receptacles, and the point where they exit from the apparatus.
12. Only use accessories supplied with the product.
13. Unplug this apparatus during lightning storms or when unused for long periods of time.
14. This lightning flash with arrowhead symbol within an equilateral triangle is intended to alert the user to the presence of non-insulated "dangerous voltage" within the product's enclosure that may be of sufficient magnitude to constitute a risk of electric shock. To reduce the risk of electric shock, do not remove cover (or back) as there are no user-serviceable parts inside. Refer servicing to qualified personnel.
15. Bluetooth wireless technology operates within a range of about 10 m (30 feet). The maximum communication distance may vary depending on the presence of obstacles (people, metal objects, walls, etc.) or the electromagnetic environment.



- 1.Turntable platter
- 2.45 RPM adaptor
- 3.Tone arm
- 4.Tone arm lift
- 5.Speed selector
- 6.Auto-stop switch
- 7.Cartridge
- 8.Power switch / Volume control
- 9.Headphone jack
- 10.DC power jack
- 11.RCA line out (R&L)
- 12.AUX IN jack

Attaching legs

The turntable comes with its own legs so it can stand alone. Alternatively, the legs can be removed, and it can sit on a table or shelf. To attach the legs to the turntable, screw each individual leg to the metal plates on the bottom of the unit.

Initial setup

MAINS CONNECTION

Ensure that the mains voltage of your home corresponds to the operating voltage of the unit. Your unit is ready to be connected to 5V DC adaptor.

AMPLIFIER CONNECTION (if required)

Whilst you can listen to your new turntable using the built-in speakers you may wish to connect it to your existing Hi-Fi system. Connect the audio connectors to the Line input on your mixer or amplifier using an RCA cable (not supplied).

Red plug into R channel.

White plug into L channel.

Playing a record

- Place the record on the turntable. If required, do not forget to place the adaptor on the record spindle.
- Choose the desired playing speed using the speed selector between 33 1/3, 45 and 78 RPM.
- Remove the protective cap from the stylus.
- Turn on the Rotary Power Switch, note that this also controls volume.
- Release the tone arm lock.
- Carefully raise the tone arm.
- Place the stylus vertically over the first track of the record; the turntable will start turning automatically.
- Lower the tone arm slowly on to the record to play.
- When a record comes to an end and the tone arm is returned to the tone arm rest, the turntable will stop automatically.
- Lift the tone arm and put it on the rest when finished.
- Place the protective cap on the stylus and close the tone arm lock.

Note: If your record stops before the last track finishes, set the auto-stop switch to OFF. Your record will now play to the end, but you will have to stop the turntable rotation manually.

Auto Stop

- When a record finish playing, it can be controlled by the auto-stop ON/OFF switch.
- Lift the tone arm and put it on the rest when finished.
- Place the protective cap on the stylus and close the tone arm lock.

USB, SD, Bluetooth, FM radio or AUX in mode

Briefly press MODE to select between FM radio, USB, SD, BT and recording files on USB stick/SD card.

For USD/SD recording, insert a USB stick or SD card first. When playing vinyl press and hold MODE for 3 seconds, then it starts to record and the LED will flash green.

- Press ►|| key to stop recording.
- Press ◀◀ to play the previous track.
- Press ▶▶ to play the next track.
- Press ►|| briefly to play or pause the music. Press and hold to delete the music stored on the external source. In recording mode, press to stop recording.

On your Bluetooth device, search “Denver VPR-250” to connect (connected if there was a remind sound); then you can use skip+ or skip-, play/pause key on your phone. To activate the record player and stop using Bluetooth, move the tone arm to turntable area.

FM radio settings

Lift the tone arm and put it on the rest, then press the MODE key to choose FM radio Mode. Press and hold the MODE key for three seconds to search for and save radio stations automatically. Press the ◀◀ or ▶▶ to select the previous or next station respectively.

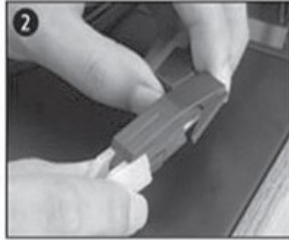
Maintenance

REPLACING THE STYLUS:

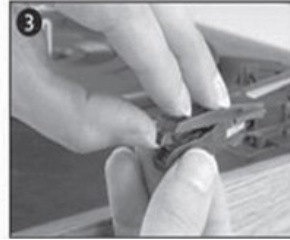
- Refer to the figures 1-8



push the arm lock to release the tone arm.



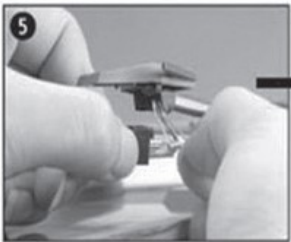
take off cap of the cartridge to expose the needle out.



separate the cartridge from the socket lightly.



take off the audio lines from the cartridge completely.



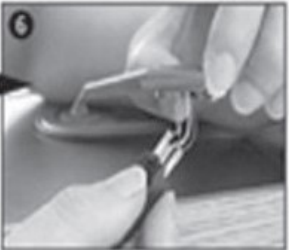
to fit a new one, just proceed in the opposite order, insert the audio lines accordingly, and install the cartridge to the socket lightly.

NOTE: Please exercise extreme care whilst performing this operation so as to avoid the tone arm and audio lines from any damage.

Maintenance

REPLACING THE STYLUS:

- Refer to the figures 5-6



NOTES:

We advise you to clean your records with an anti-static cloth to gain maximum enjoyment from them and to make them have a longer service life. We would also point out that for the same reason your stylus should be replaced periodically (approximately every 250 hours).

Dust the stylus from time to time using a very soft brush dipped in alcohol (brushing from back to front of the cartridge).

WHEN TRANSPORTING YOUR RECORD PLAYER DO NOT FORGET TO:

- Replace the protective cap on the stylus.
- Put the rest clip into the pick-up arm.

Manufacturer's name or trade mark, commercial registration number and address	Shenzhen Shi Guangkaiyuan Technology co., Ltd 91440300053998927w 2 Floor, 41 TianSheng Road, TianLiao village, Guangming, Shenzhen, Guangdong, PRC.
Model identifier	GKYP50100050EU1
Input voltage	AC 100-240V
Input AC frequency	50/60 Hz
Output voltage	DC 5V
Output current	1A
Output power	5W
Average active efficiency	73.62%
Efficiency at low load (10%)	69%
No-load power consumption	0.05W

Please notice - All products are subject to change without any notice. We take reservations for errors and omissions in the manual.

ALL RIGHTS RESERVED, COPYRIGHT DENVER A/S



www.denver.eu



Electric and electronic equipment contains materials, components and substances that can be hazardous to your health and the environment, if the waste material (discarded electric and electronic equipment) is not handled correctly.

Electric and electronic equipment is marked with the crossed out trash can symbol, seen above. This symbol signifies that electric and electronic equipment should not be disposed of with other household waste, but should be disposed of separately.

All cities have established collection points, where electric and electronic equipment can either be submitted free of charge at recycling stations and other collection sites, or be collected from the households. Additional information is available at the technical department of your city.

Hereby, Denver A/S declares that the radio equipment type VPR-250 is in compliance with Directive 2014/53/EU. The full text of the EU declaration of conformity is available at the following internet address: denver.eu and then click the search ICON on topline of website. Write model number: VPR-250. Now enter product page, and RED directive is found under downloads/other downloads.

Operating Frequency Range: 87.5MHz--108.0MHz

Max Output Power: 2*2.25W

DENVER A/S
Omega 5A, Soeften
DK-8382 Hinnerup
Denmark

www.facebook.com/denver.eu

Contact

Nordics

Headquarter
DENVER A/S
Omega 5A, Soeften
DK-8382 Hinnerup
Denmark

Phone: +45 86 22 51 00
(Push "2" for support)

E-Mail

For technical questions, please write to:
support@denver.eu

For all other questions please write to:
intersales@denver.eu

Benelux/France

DENVER BENELUX B.V.
Barwoutswaarder 13C+D
3449 HE Woerden
The Netherlands

Phone: +31 348 420 029

E-Mail: support-nl@denver.eu

Spain/Portugal

DENVER AS SPAIN S.A
C/Moscú, 1 Pol.Ind.Mas de Tous
46185 La Pobla de Vallbona
Valencia (Spain)

Spain

Phone: +34 960 046 883
Mail: serviciotecnico.denver@denver.eu

Portugal:

Phone: +35 1255 240 294
E-Mail: denver.service@satfiel.com

Germany

Denver Germany GmbH
Service
Gutenbergstrasse 1
94036 Passau
Phone: +49 851 379 369 40

E-Mail

service-germany@denver.eu

Fairfixx GmbH
Repair and service
Rudolf-Diesel-Str. 3 TOR 2
53859 Niederkassel

(for TV, E-Mobility/Hoverboards/
Balanceboards, Smartphones & Tablets)

Tel.: +49 851 379 369 69

E-Mail: denver@fairfixx.de

Austria

Lurf Premium Service GmbH
Deutschstrasse 1
1230 Wien

Phone: +43 1 904 3085

E-Mail: denver@lurfservice.at

If your country is not listed above,
please write an email to
support@denver.eu



DENVER A/S
Omega 5A,
SoeftenDK-8382
Hinnerup
Denmark
denver.eu