

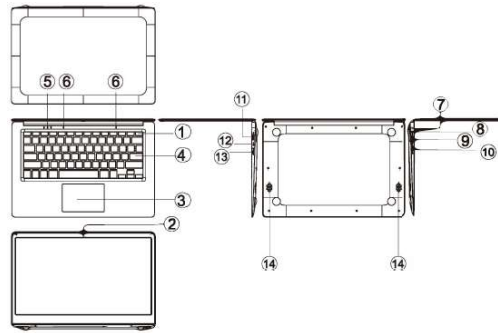
denver



Quick Start Guide

NBD-14105ES

Unit at a Glance



1. Power button: Press it down to start or close the screen panel.

You can also let the computer to enter dormancy through this button or wake from the dormancy mode.

2. Front camera: take pictures, shoot video.
3. Touchpad: The device can be operated directly.
4. Keyboard board: the device can be operated directly.
5. Indicators:
 1. is the blue light when the Caps Lock indicator Caps Lock;
 2. charging indicator, red when charging connector adapter;
 3. work light, bright blue when the machine starts to work.
6. Microphone: it can transmit audio signals to a device at work.

ENG-3

7. Charge indicator: red light when plug adapter
8. DC charging base: use the built-12V/2A charger.
9. USB Interface: You can insert U disk, mouse, and keyboard directly.
10. Mini-HDMI Interface: High-Definition Multimedia Interface.
11. Headphone jack: This jack device can transmit audio signals to the speakers or headphones.
12. USB Interface: You can insert U disk, mouse, and keyboard directly.
13. Micro SD card slot: built-in memory card reader slot that supports Micro SD format.
14. Speakers: the built-in speaker lets you hear the sound of work without additional connected devices.

Interface Introduction

Windows 10 start image: On the start screen, you can see many programs fixed in the image. These application programs are displayed in the form of "magnet". As long as you click them, you can easily visit them. You need to log on your Microsoft account before the application program completely runs.

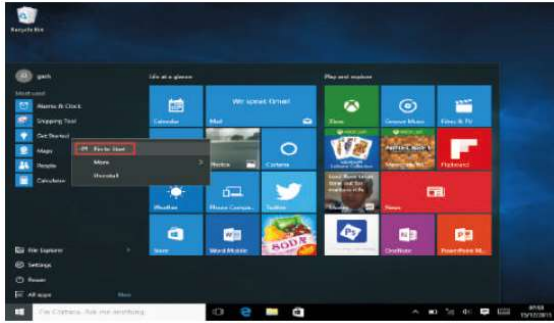


Applications Introduction

In addition to already fixed on the start screen of the application, you can open all applications in the Home page.

If you want to add multiple applications on the Start screen, refer to the operation as shown below

- (1) Right-click on the Properties icon
- (2) Select fixed at the beginning of the page



Conversely, if you want to cancel or delete start screen a certain application, (1) Right-click

ENG-6

(2) and then select the undock from the start page.



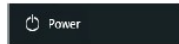
Menu bar

Touch or USB mouse to click with windows home button appears on the menu bar.

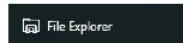
ENG-7



Expand the menu bar from the screen, usually: a file manager, settings, power supply and all applications, you can sleep / shutdown / restart the device.

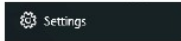


You can manage your files and applications in the device.

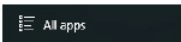


You can set up your device.

ENG-8



You can choose more applications.



Search menu

After Hunan can login account can be set up after the language or text dialogue, if not logged on account only for text searches.



ENG-9

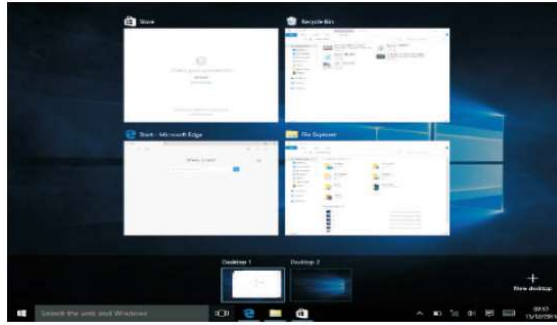
Device menu. Click on the notification menu.



Multitasking operating interface

Click the Desktop task view to operating a multi-tasking and multi-desktop window.

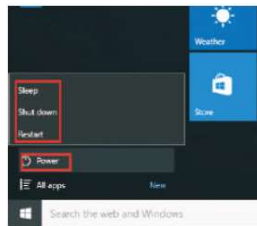
ENG-10



Basic Operations

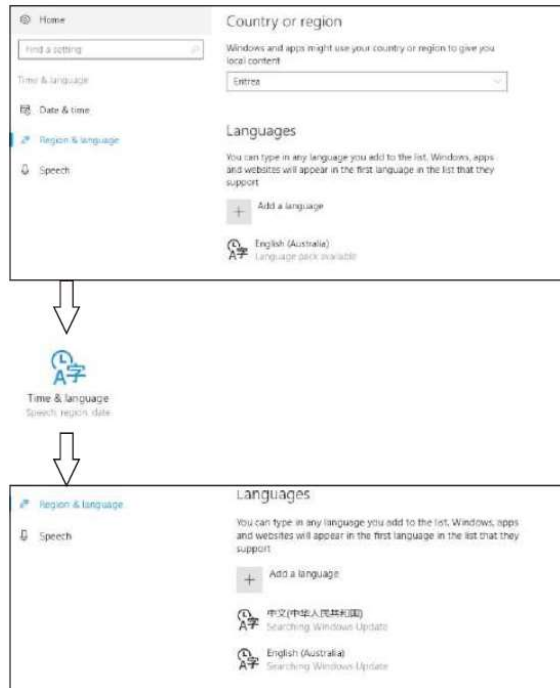
Sleep, restart, power off

Short press the power button Hibernation.



ENG-11

How to change language



ENG-12

Specifications

Processor	Intel Celeron N4020	
Storage	RAM	4G
	ROM	64 GB
Display	14.1" TN Panel	
Wi-Fi Networking	IEEE 802.11 b/g/n	
Audio Output	3.5mm headphone	
USB Host	1xUSB3.0, 1xUSB2.0	
HDMI	MINI HDMI x1	
Bluetooth	4.0	
Camera	Front 0.3MP	
Operating System	WINDOWS 10	
Power	Rechargeable Li-poly battery Power Adapter(DC IN 12V, 2A)	
Speakers	2x1 W speakers	



www.denver-electronics.com



Electric and electronic equipment and included batteries contains materials, components and substances that can be hazardous to your health and the environment, if the waste material (discarded electric and electronic equipment and batteries) is not handled correctly.

Electric and electronic equipment and batteries is marked with the crossed out trash can symbol, seen above. This symbol signifies that electric and electronic equipment and batteries should not be disposed of with other household waste, but should be disposed of separately.

As the end user it is important that you submit your used batteries to the appropriate and designated facility. In this manner you make sure that the batteries are recycled in accordance with legislature and will not harm the environment.

All cities have established collection points, where electric and electronic equipment and batteries can either be submitted free of charge at recycling stations and other collection sites, or be collected from the households. Additional information is available at the technical department of your city.

Operating Frequency Range Wifi: 2.400 ~2.4835GHz

Operating Frequency Range Bluetooth: 2.400 ~ 4.000GHz

Max output Power: Wifi 16dBm BT 8dBm

Hereby, Inter Sales A/S declares that the radio equipment type NBD-14105ES is in compliance with Directive 2014/53/EU. The full text of the EU declaration of conformity is available at the following internet address: www.denver-electronics.com and then click the search ICON on topline of website. Write model number: NBD-14105ES .Now enter product page, and red directive is found under downloads/other downloads.

DENVER ELECTRONICS A/S

Omega 5A, Soeften

DK-8382 Hinnerup

Denmark

facebook.com/denverelectronics

Manufacturer's name or trade mark, commercial registration number and address	SHENZHEN HENGTAIYING TECHNOLOGY CO.,LTD Commercial registration number:9144030008010049XB Southeast 2F,11Block,Kaetat Industrial Park,Liaokeng Village,Shiyan Street,Bao'an District, Shenzhen City, Guangdong, China
Model identifier	HTY24-1202000E
Input voltage	100-240V
Input AC frequency	50/60 Hz

ENG-15

Output voltage	12V
Output current	2A
Output power	24W
Average active efficiency	>86.2%
Efficiency at low load (10%)	>76.8%
No-load power consumption	<0.1W

ENG-16