

# DENVER<sup>®</sup>

denver-electronics.com

## --Instructions

This is a quick start guide to get your product up and running.  
For the full manual please visit our website and search for your product.

 [facebook.com/denverelectronics](https://facebook.com/denverelectronics)

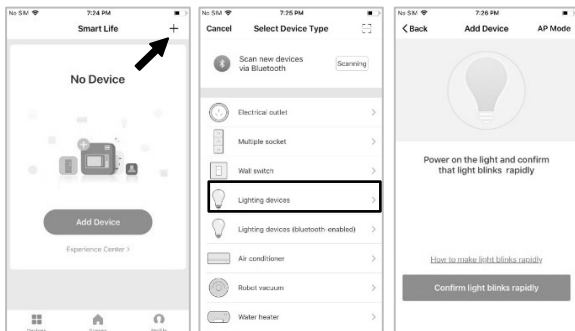
# Denver Smart Home



Android App



iOS App



# Lighting product instructions for use

## Universal Edition Denver Smart Home App

### Preparation for use

1. Power on the lamp while ensuring that your smartphone is connected to the 2.4 GHz Wi-Fi network;
2. Download and open the app.  
Search for "Denver Smart Home" in the App Store or scan the QR code below or on the package to download and install the app.  
Tap the "Register" button to register if you download it for the first time. If you already have an account, tap the "Login" button.

### Device Network configuration

1. Open the Denver Smart Home app and access the "Devices" page. Tap the "+" mark in the upper right corner of the page.
2. Select "Lighting devices" on the device list page.
3. Two configuration modes are available for connection: EZ mode and AP mode.
  - 1) EZ Mode

Ensure the light flashes quickly (twice a second). This indicates that the lamp is in configuration mode. Press the lamp switch 3 times (on-off-on-off-on) until the light flashes quickly. Tap the "Confirm light blinks rapidly" button on the "Add Device" page to start connection.

Please notice - All products are subject to change without any notice. We take reservations for errors and omissions in the manual.

ALL RIGHTS RESERVED, COPYRIGHT DENVER ELECTRONICS A/S

Electric and electronic equipment and included batteries contains materials, components and substances that can be hazardous to your health and the environment, if the waste material (discarded electric and electronic equipment and batteries) is not handled correctly.

Electric and electronic equipment and batteries is marked with the crossed out trash can symbol, seen above. This symbol signifies that electric and electronic equipment and batteries should not be disposed of with other household waste, but should be disposed of separately.

As the end user it is important that you submit your used batteries to the appropriate and designated facility. In this manner you make sure that the batteries are recycled in accordance with legislature and will not harm the environment.

All cities have established collection points, where electric and electronic equipment and batteries can either be submitted free of charge at recycling stations and other collection sites, or be collected from the households. Additional information is available at the technical department of your city.

Hereby, Inter Sales A/S declares that the radio equipment type SHL-350 is in compliance with Directive 2014/53/EU. The full text of the EU declaration of conformity is available at the following internet address: [www.denver-electronics.com](http://www.denver-electronics.com) and then click the search ICON on topline of website. Write model number: SHL-350. Now enter product page, and red directive is found under downloads/other downloads.

Operating Frequency Range: 50-60Hz

Max Output Power:9W

DENVER ELECTRONICS A/S

Omega 5A, Soeften

DK-8382 Hinnerup

Denmark

[www.facebook.com/denverelectronics](http://www.facebook.com/denverelectronics)

Please notice - All products are subject to change without any notice. We take reservations for errors and omissions in the manual.

ALL RIGHTS RESERVED, COPYRIGHT DENVER ELECTRONICS A/S

# DENVER®

[www.denver-electronics.com](http://www.denver-electronics.com)



Electric and electronic equipment contains materials, components and substances that can be hazardous to your health and the environment, if the waste material (discarded electric and electronic equipment) is not handled correctly.

Electric and electronic equipment is marked with the crossed out trash can symbol, seen above. This symbol signifies that electric and electronic equipment should not be disposed of with other household waste, but should be disposed of separately.

All cities have established collection points, where electric and electronic equipment can either be submitted free of charge at recycling stations and other collection sites, or be collected from the households. Additional information is available at the technical department of your city.

Hereby, Inter Sales A/S declares that the radio equipment type SHL-350 is in compliance with Directive 2014/53/EU. The full text of the EU declaration of conformity is available at the following internet address: [www.denver-electronics.com](http://www.denver-electronics.com) and then click the search ICON on topline of website. Write model number: SHL-350. Now enter product page, and red directive is found under downloads/other downloads.

Operating Frequency Range: 50–60Hz

Max Output Power: 9W

DENVER ELECTRONICS A/S

Omega 5A, Soeflen

DK-8382 Hinnerup

Denmark

[www.facebook.com/denverelectronics](https://www.facebook.com/denverelectronics)

ALLE RETTIGHEDER RESERVERET, COPYRIGHT DENVER ELECTRONICS A/S

# DENVER®

[www.denver-electronics.com](http://www.denver-electronics.com)

CE



DENVER ELECTRONICS A/S  
Omega 5A, Soeften  
DK-8382 Hinnerup  
Denmark  
[www.denver-electronics.com](http://www.denver-electronics.com)  
Made in China



[facebook.com/denverelectronics](https://facebook.com/denverelectronics)