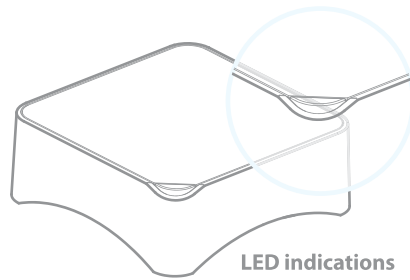
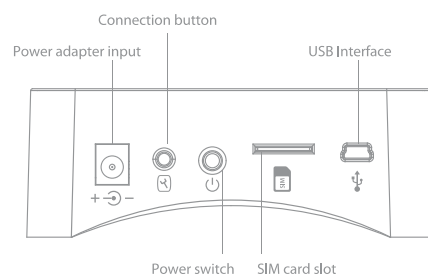


WIFI+GSM Security Alarm System

2 Design



LED indications

- Red fixed: System Armed
- Blue fixed: System armed in home mode
- Green fixed: System disarmed
- Blink white Slowly: Connected to the server
- Blink white Fast: Wi-Fi network settings mode

3 Features

- Works with GSM and Internet Connection (Wi-Fi Connection)
- Supports up to 10 remote controls, 60 wireless accessories
- Can store up to 5 phone numbers, 5 SMS numbers.
- Arm / disarm the system by SMS, phone call, or App (on iOS or Android)
- Notifications in case of alert and system status change
- SIM card slot: stay connected even where you don't have an Internet connection or when your home Wi-Fi network is down (SIM card not included)
- Audio surveillance of the site from distance
- Built-in siren (95dB)
- Built-in lithium batteries for more than 8hours standby mode.

4 Specifications

Product name

DENVER SHA-150

Transmission distance

up to 80M in open space

Backup batteries

Lithium Batteries: 7.4V / 600 mAh

Power Supply

Input: AC 110-240V / 50-60 Hz
Output: DC 12V / 1A

Internal siren

95dB

Wi-Fi

2.4GHz 802.11 b/g/n

Housing material

ABS plastic

GSM- frequency

GSM:850 / 900 / 1800 / 1900 MHz

Operating conditions

Temperature: -10°C~55°C
Humidity: ≤ 80% (non-condensing)

Radio-frequency

433/868MHz

Control panel dimensions (L x W x H)

109.5 x 109.5 x 40mm

5 Get your APP ready DENVER SMART HOME

5.1 Download APP on your smart phone.

The app is available on the App Store and Google Play.

5.2 Run and install the APP on your smart phone.

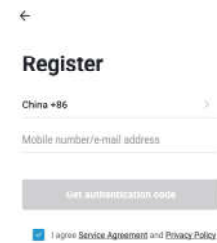
5.3 Register by your Mobile number/e-mail address.

5.4 Login and create family.

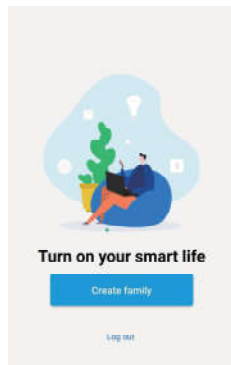
Run the APP



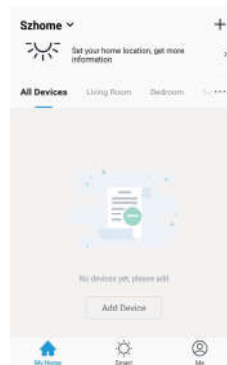
Register Interface



Create Family



Device Interface



6 Connect the Alarm to your APP

There are two way to connect the alarm to APP: EZ and AP mode, please use AP mode when can not connect the alarm in EZ mode.

6.1 connect in EZ mode

Step 1. Enter Wi-Fi EZ Mode: Connection button

Ensure the system is disarmed before this operation, long press and hold the **"Connection button"** until hear 1beep, the **small LED** start blinks, now your alarm is ready in EZ mode for network setting.

Step 2. Choose the device which will be add

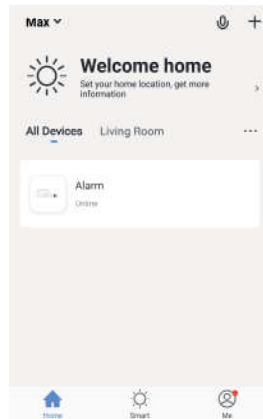
choose "Add +"—>"Others"—>"Wi-Fi Connector" in the APP.

Step 3. Set the Wi-Fi network which will be connect

Enter Wi-Fi password of the router which the alarm will be connect to, waiting for about 20 seconds to get a response.

Step 4. Now you can set the alarm name to complete the connection

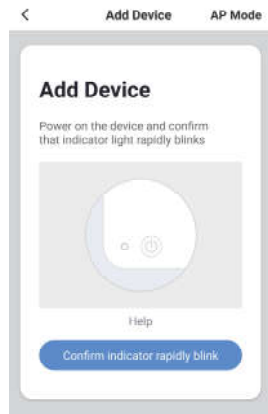
Device List



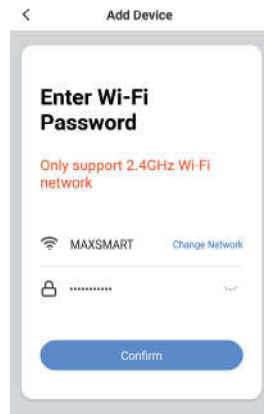
Choose Device



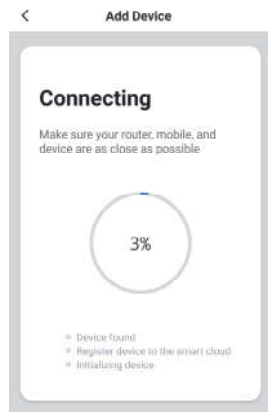
Choose Add Device



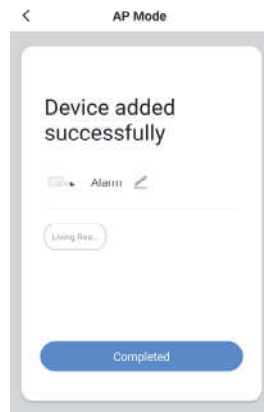
Enter Wi-Fi password



Connecting



Set Alarm's Name



To connect in AP mode

Step 1. Enter Wi-Fi AP Mode: Connection button

Turn off the device before this operation, press and hold the " **Connection button**" then turn on the device until hear 1beep, the **small Led** start blinks, now your alarm is ready in AP mode for network setting.

Step 2. Choose the device which will be add

choose "Add Manually"→"Others"→"Wi-Fi Connector" in the APP.

Step 3. Choose 'AP Mode'

Step 4. Set the Wi-Fi network which will be connect

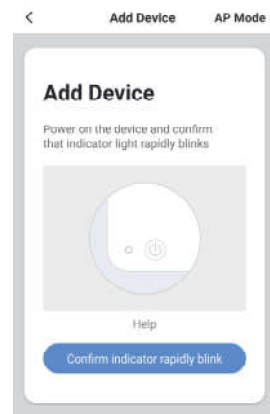
Enter Wi-Fi password of the router which the alarm will be connect to.

Step 5. Connect the phone's Wi-Fi to the device's hotspot

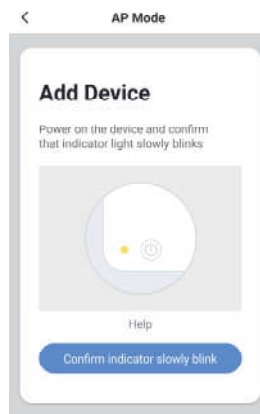
In phone's WLAN list, choose 'SmartLife_ xxxx' and connect. After connected, return back to the APP, waiting for about 20 seconds to get a response.

Step 6. Now you can set the alarm name to complete the connection

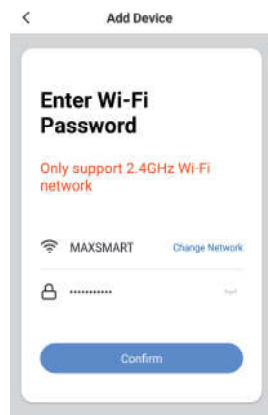
Choose AP Mode



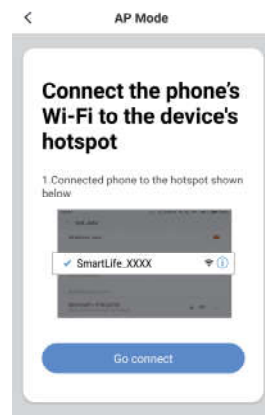
AP Mode



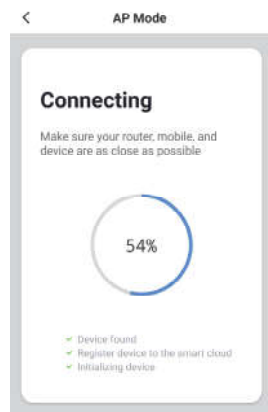
Enter Wi-Fi Password



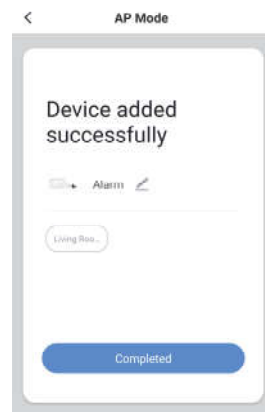
Connect to SmartLife_XXXX



Connecting

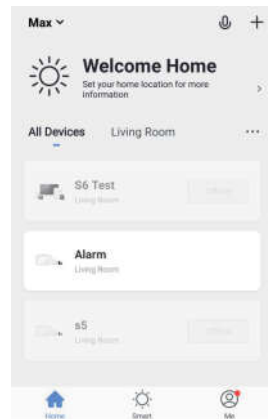


Set Alarm's Name

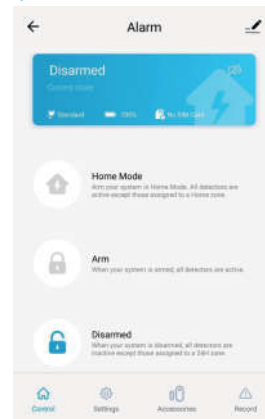


7 APP Operation Interface

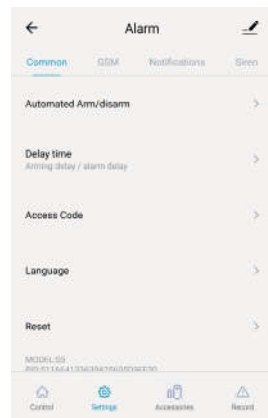
Device List Interface



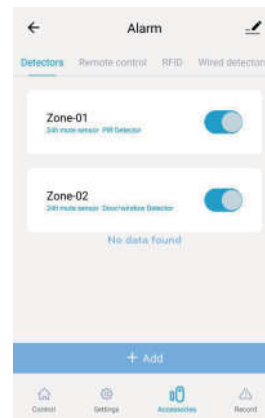
Operation interface



Settings interface



Accessories Interface



8 Daily use

① Arm the system

When your system is armed, all detectors are active.

By app

Connect to your alarm and click on "Arm".

By remote control

Press on the "Arm" button of the remote control .

By SMS

Send 1 to the phone number of the SIM card in the control panel.

② Arm in Home mode

When your system is armed in Home mode, all detectors are active except those assigned to the Home zone.

By app

Connect to your alarm and click on "Home mode".

By remote control

Press on the "Home" button of the remote control .

By SMS

Send 2 to the phone number of the SIM card in the control panel.

③ Disarm the system

When your system is disarmed, all detectors are inactive except those assigned to the 24H zone.

By app

Connect to your alarm and click on "Disarm".

By remote control

Press on the "Disarm" button of the remote control .

By SMS

Send 0 to the phone number of the SIM card in the control panel.

SOS SOS function

The SOS function enables you to trigger your alarm immediately.

By remote control

Press on the "SOS" button of the remote control.

Note: Only stored numbers can send the SMS to control the system.

9 Control by SMS

You will need a SIM card if you wish to interact with your Alarm system by SMS and phone calls.

How it works

For each setting you want to modify by SMS, it works as below:

- Send a code by SMS.
- The control panel replies you with the corresponding settings currently saved in your alarm.
- Copy this SMS and paste it as a reply to the control panel.
- Modify the SMS according to the setting you wish to change, before sending back to the control panel.
- The control panel replies "ok" as a confirmation.

Read on for the complete list of settings by SMS.

SMS code	Function	SMS code	Function
?	check SMS commands	0001~0015	Set system language
00	Settings inquiry	0001	English
0	Disarm the system	0002	French
1	Arm the system	0003	Russian
2	Home Mode	0004	Danish
5	Store Phone numbers	0005	Dutch
6	Store SMS numbers	0006	Italian
91~99	Rename zone	0007	Swedish
10	Rename RFID-tag	0008	German
11	Entry and exit delay time	0009	Spanish
12	Siren volume and ringing time	0010	Finnish

13	User code	0011	Norwegian
21	Delete all accessories	0012	Arabic
22	Delete remote control	0013	Farsi
23	Delete wireless detector	0014	Chinese
24	Delete RFID-tag	0015	Portuguese
0000	Restore system to factory settings		

Note

- Languages available may vary depending on the version of your product.
- Only stored numbers can send the SMS to control the system.

Important

- Make sure the SIM card is not protected by a PIN code.
- Insert the SIM card when your Alarm is turned off.
- We advise you to choose a plan with unlimited text and 1 or 2 hours of call. The SIM card must be compatible with the GSM network. Contact your carrier for more information.

10 Control by phone call

This function applies only if you are using the Alarm system with a SIM card.

This function enables you to control your alarm system by phone call. This can especially be helpful if you are located in an area without Wi-Fi or 3G/4G coverage.

How it works

1. Call the phone number of the SIM card in the control panel.
2. The control panel picks up: type your 4-digit passcode, followed by “#” (Default passcode: 1234).
3. A voice prompt confirms if your code is correct.
4. On your phone, dial the code corresponding to the command:

Table 1

Dial	Command
1	Arms the system
0	- Disarms the system and turns the siren off - Stops monitoring without hanging up
*	Audio monitoring
6	Turns the siren off
9	Turns the siren on
#	Disarms the system, turns the siren off and ends the phone call

If your alarm is triggered

If the alarm is triggered, your control panel immediately starts to inform you:

At home

- The built-in siren starts ringing out.
- If you have connected additional sirens, they start ringing out too.

On your smartphone(if your alarm is connected to your Wi-Fi network)

- You receive a push notification in the Maxsmart home app (you must have an Internet access on your smartphone).

On your smartphone (with a SIM card in the control panel)

- The control panel sends an SMS notification to every SMS number saved.
- The control panel calls every Phone number saved. If you take that call, you can decide to stop the siren, disarm the system or other functions as listed below, by dialing the corresponding code in Table1.

11 Connect wireless accessories

By the keypad:

- When the system is on disarm mode, Press once on the connection button on the side of the control panel, you will hear 1 beep and find the system status LED light on means the control panel enter connection mode.
- Trigger the accessory which will be connected, you will hear one beep:

the accessory is registered. If the control panel beeps twice, the detector was already connected.

By the APP:

- Connect to the alarm, choose the wireless accessory → click "+" ADD.
- Trigger the accessory which will be connected, you will hear one beep: the accessory is registered. If the control panel beeps twice, the detector was already connected.

12 Restore default settings

Turn the control panel on. Press the connection button "ⓧ" 5 times within 5 seconds after having turned it on, the device will be restored to the factory settings.

The system settings and connected accessories will be restored.

Warning



ATTENTION
RISK OF ELECTRIC
SHOCK
DO NOT OPEN



CAUTION: TO REDUCE THE RISK OF ELECTRIC SHOCK, DO NOT REMOVE COVER (OR BACK). NO USER SERVICEABLE PARTS INSIDE, REFER SERVICING TO QUALIFIED SERVICE PERSONNEL.



This symbol is intended to alert the user to the presence of uninsulated "dangerous voltage" within the product's enclosure that may be of sufficient magnitude to constitute a risk of electric shock to persons.



The exclamation point within an equilateral triangle is intended to alert the user to the presence of important operating and maintenance (servicing) instructions in the literature accompanying the product.

To prevent fire or shock hazards, do not expose this product to rain or moisture. Apparatus shall not be exposed to dripping or splashing and no object filled with liquids, such as vases, shall be placed on the apparatus.

Standards



This product bears the selective sorting symbol for waste electrical and electronic equipment (WEEE). This means that this product must be handled pursuant to European Directive 2012/19/EU in order to be recycled or dismantled to minimize its impact on the environment.

For further information, please contact your local or regional authorities.

Electronic products not included in the selective sorting process are potentially dangerous for the environment and human health due to the presence of hazardous substances.



In compliance with European laws. This product is in compliance with the essential requirements and other relevant provisions of Directive 2014/53/EU.



This product was designed and manufactured in compliance with Directive 2011/65/EU of the European Parliament and of the Council on the restriction of use of certain hazardous substances in electrical and electronic equipment (RoHS Directive - RoHS) and is deemed to comply with the maximum concentration values set by the European Technical Adaptation Committee (TAC).

Manufactured in China.