

DENVER[®]

Infrared Wild Camera

User's Manual

WCT-8020W



PACKING INCLUDES



◀ Camera

Manual ▶



◀ Mounting Strap

USB Cable ▶







Micro SD Card Slot
USB Port
Mode Switch

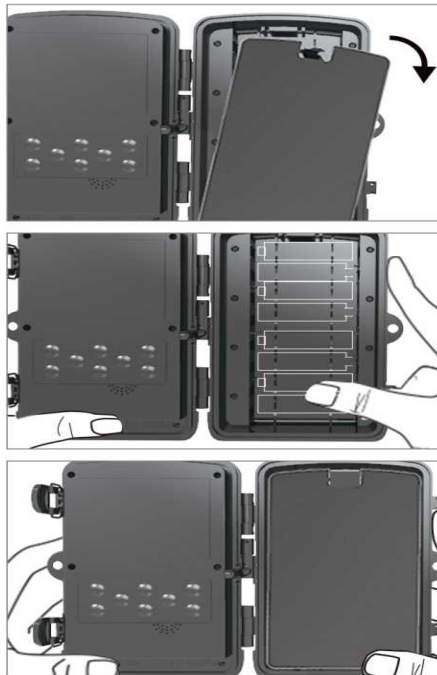


Stand Knob Port

INSTALLING BATTERIES

USING AA -ALKALINE BATTERIES

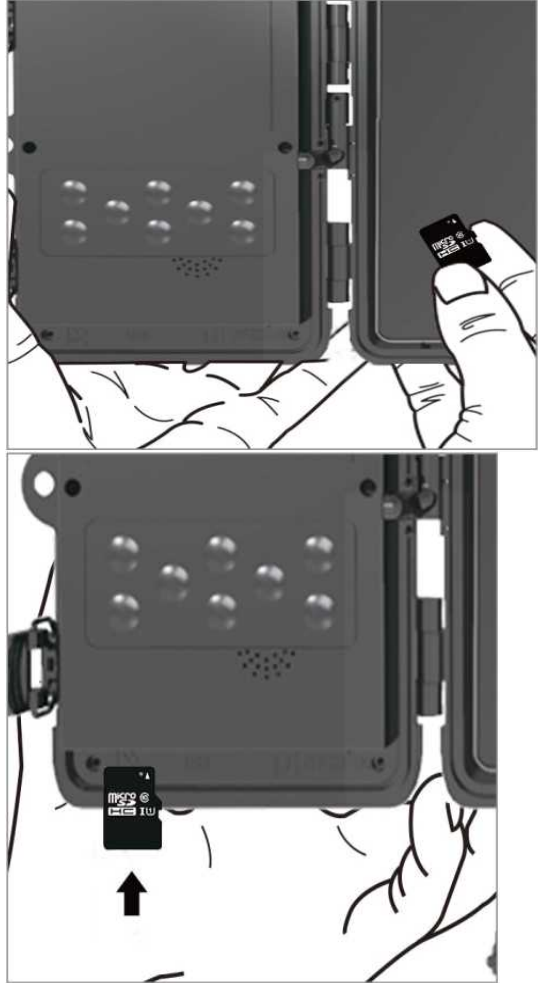
- 1 Pull the gap lightly and open battery compartment.
- 2 Reference the battery icons located on the inside of the battery compartment. Insert the batteries according to the positive and negative battery icons.
- 3 Close the battery compartment to resist water and dust.
- 4 NOTE: Installing any of the 8-AA batteries in the wrong direction may cause the batteries to leak acid and could possibly explode, causing camera failure and damage to the battery compartment.



INSTALLING MEMORY CARD

INSTALL MICRO-SD CARD

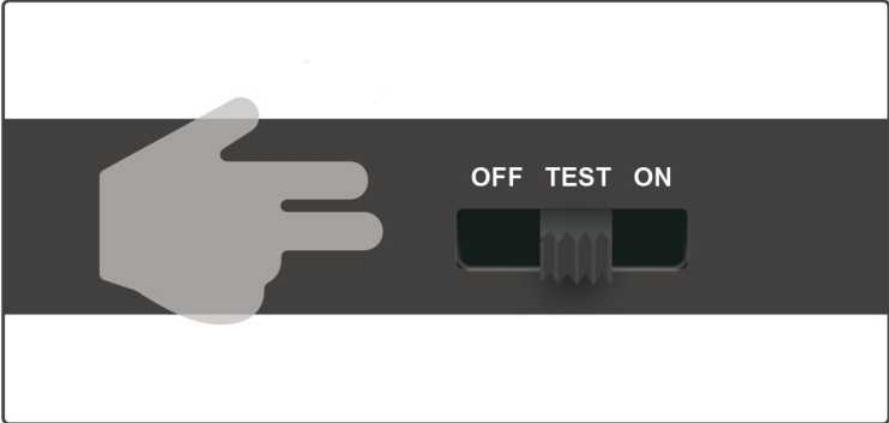
1. Insert the Micro SD card with the contacts facing down. The Micro SD card should slide in freely with little resistance. Continue pressing the card inward until you hear a click. This means the Micro SD card is locked in place and ready for use.
2. To remove Micro SD card, press the card inwards to release.



QUICK START

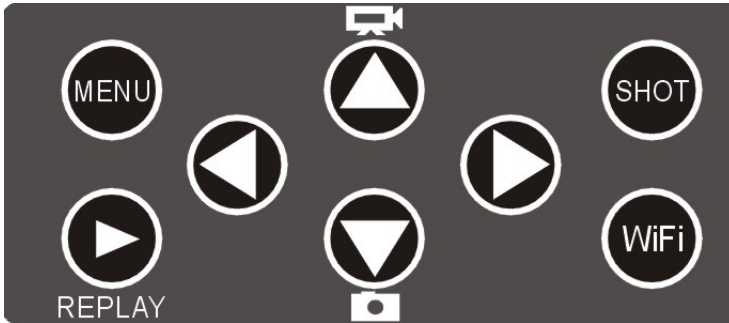
Enter to TEST mode

Slide the mode switch from OFF to TEST position to activate the camera and view the user setup screen.



There is a control panel with 8 keys when you open the camera.

OPERATING BUTTONS



REPLAY: Press this button to start the replay mode; Press it to play a video, press it again to stop the playing.

Up: Change to the working mode for video recordings.

Down: Change to the manual recording mode for taking photos.


SHOT: Manually take a video or photo depending on the set recording mode. Video recordings are ended by pressing the SHOT button.

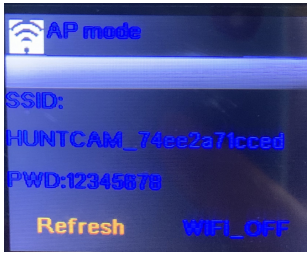
MENU: Open the Settings menu using the MENU button.

Generally, it is recommended to place the camera at the height of 3 to 6 feet (1 to 2 meters) to the ground.

Wi-Fi APP Function

Search “Denver WCT-8020W” in APP store (for IOS) or Google Play (for android) with your smart phone and download it.

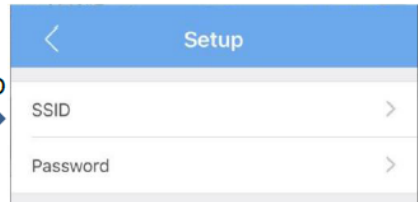
1. **TEST Mode** (Check the Wi-Fi status and change the settings)
 - 1.1. Turn the mode switch to TEST position, press the small button under the key board for 5 seconds to clear the code and then start to pair the remote control with the camera.
(Under TEST mode, the remote control only can pair with the camera.)
 - 1.2. Then press  button on the camera to open the WIFI function (under TEST mode).
You will find the WIFI name (HUNTCAM-) and password (12345678) is displayed on the screen.



- 1.3. Use your phone to search the Wi-Fi name and enter the password, then the camera screen will show: Wi-Fi connected.
- 1.4. WIFI name or password can be changed in the APP when connected.

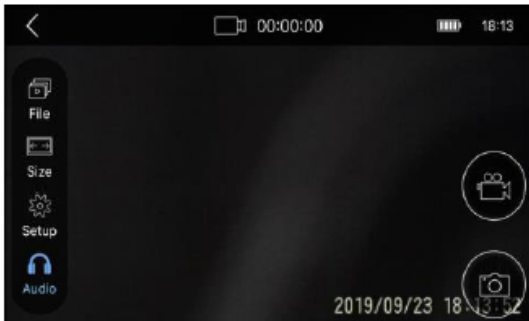


Set up



2. **ON mode**

- Turn the mode switch of the camera to ON position, then the camera will start work after 10 seconds count down, meanwhile the red indicator light will flash.
 - Press the ON button to open the Wi-Fi switch of the remote control. Once the Wi-Fi is opened, the blue indicator light will flash until your phone connected it.
 - Refer to the section 1.2~1.3 to connect your smart phone to the camera wifi. After connected, the camera will start to work.
- 2.1. You can operate the camera to take picture or video via the APP.



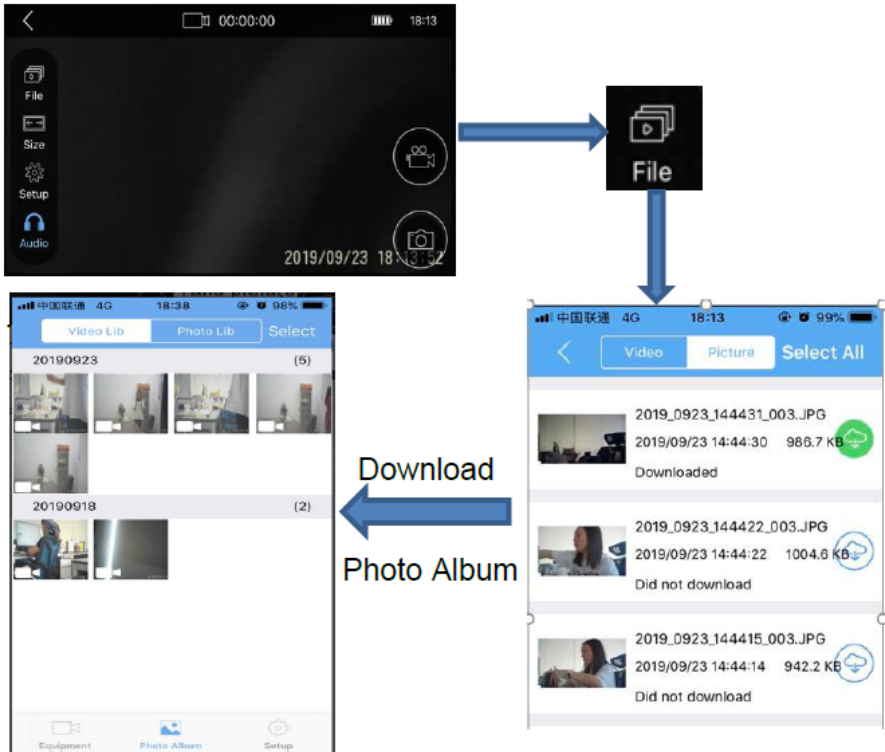
Take video



Take picture



- 2.2. You can find all pictures or videos captured in “File” (see below picture). And also you can download all files to the photo album without taking the Micro SD card out.



3. **OFF mode**

- 3.1. Press the OFF button of the remote control, the Wi-Fi function will be closed and then it will work like a normal wild camera. The camera captures picture or video once it detects motions. You can download the pictures/videos when you connect the Wi-Fi again



Note: Password: 4 digital numbers (1314 is the universal password)

Please notice - All products are subject to change without any notice. We take reservations for errors and omissions in the manual.

ALL RIGHTS RESERVED, COPYRIGHT
DENVER ELECTRONICS A/S

DENVER®

www.denver-electronics.com



Electric and electronic equipment and included batteries contains materials, components and substances that can be hazardous to your health and the environment, if the waste material (discarded electric and electronic equipment and batteries) is not handled correctly.

Electric and electronic equipment and batteries is marked with the crossed out trash can symbol, seen above. This symbol signifies that electric and electronic equipment and batteries should not be disposed of with other household waste, but should be disposed of separately.

As the end user it is important that you submit your used batteries to the appropriate and designated facility. In this manner you make sure that the batteries are recycled in accordance with legislature and will not harm the environment.

All cities have established collection points, where electric and electronic equipment and batteries can either be submitted free of charge at recycling stations and other collection sites, or be collected from the households. Additional information is available at the technical department of your city.

Hereby, Inter Sales A/S declares that the radio equipment type WCT-8020W is in compliance with Directive 2014/53/EU. The full text of the EU declaration of conformity is available at the following internet address: www.denver-electronics.com and then click the search ICON on topline of website. Write model number: WCT-8020W. Now enter product page, and red directive is found under downloads/other downloads.
Operating Frequency Range:
Max Output Power:

DENVER ELECTRONICS A/S

Omega 5A, Soefften

DK-8382 Hinnerup

Denmark

www.facebook.com/denverelectronics