

**DENVER**<sup>®</sup>  
denver-electronics.com

**Instruction manual**

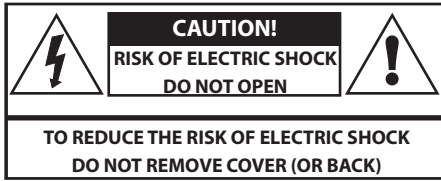
**DAB+ / DAB FM Radio**

**DENVER DAB-40**



COPYRIGHT DENVER ELECTRONICS A/S  
[www.denver-electronics.com](http://www.denver-electronics.com)  
[www.facebook.com/denverelectronics](https://www.facebook.com/denverelectronics)

## IMPORTANT SAFETY INFORMATION



This symbol indicates that there are important operating and maintenance instructions in the literature accompanying this unit.



This symbol indicates that dangerous voltage constituting a risk of electric shock is present within this unit.

Read these instructions.

Keep these instructions.

Heed all warnings.

Follow all instructions.

Do not use this apparatus near water.

Clean only with a dry cloth.

Do not block any ventilation openings.

Install in accordance with the manufacturer's instructions.

Do not install or operate near any heat sources such as radiators, stoves, or other apparatus that produce heat.

Unplug this apparatus during lightning storms or when unused for long periods of time.

Refer all servicing to qualified service personnel. Servicing is required when the apparatus has been damaged

in any way, such as the power-supply cord or plug is damaged, liquid has been spilled or objects have fallen into the apparatus, the apparatus has been exposed to rain or moisture, does not operate normally, or has been dropped.

Warning: To reduce the risk of fire or electrical shock, do not expose this product to rain or moisture. The product must not be exposed to dripping and splashing and no object filled with liquids such as a vase of flowers should be placed on the product.

No naked flame sources such as candles should be placed on the product.

Batteries (a battery pack or installed batteries) shall not be subject to excessive heat such as sunshine, fire or the like.

Caution: Changes or modifications not expressly approved by the manufacturer could void the user's authority to operate this device.

Caution: Usage of controls or adjustments or performance of procedures other than those specified herein may result in hazardous exposure.



To prevent possible hearing damage, do not listen at high volumes for long periods.

## IMPORTANT

This equipment generates, uses and can radiate radio frequency energy and, if not installed and used in accordance with the instructions, may cause harmful interference to radio communication. However, this is no guarantee that interference will not occur in a particular installation. If this equipment does cause harmful interference to radio or television reception, which can be determined by turning the equipment off and on, the user is encouraged to try to correct the interference by one of the following measures:

- Reorient or relocate the receiving antenna.
- Increase the separation between the equipment and receiver.
- Connect the equipment into an outlet on a circuit different from that to which the receiver is connected.
- Consult the dealer or an experienced radio/TV technician for help.

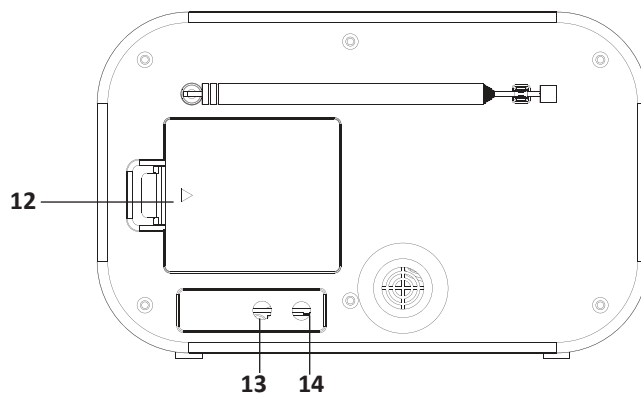
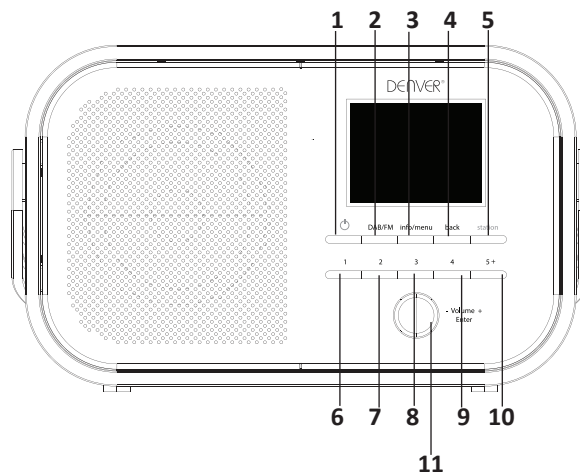
## ELECTRICAL INFORMATION

Use this appliance only with the supplied AC Adapter.

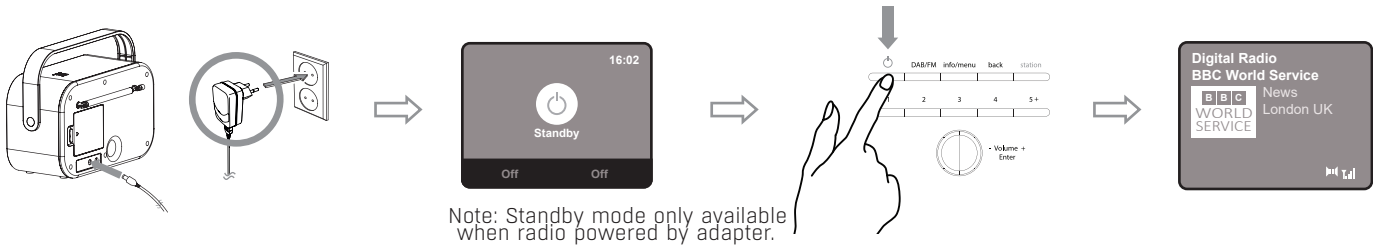
Using non-approved power supplies will void the warranty.

# Your Digital radio

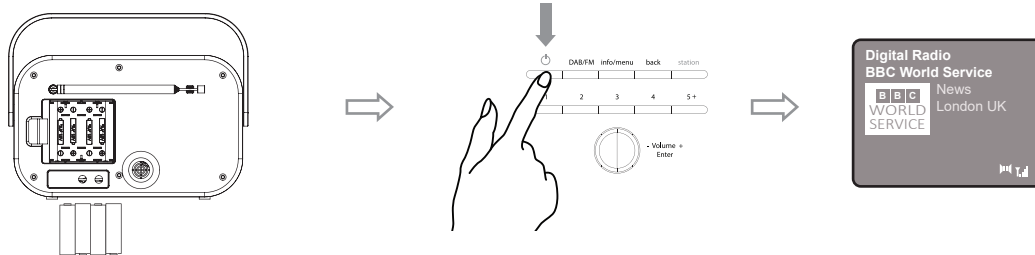
- 1 On/Off
- 2 DAB/FM
- 3 Info/Menu
- 4 Back
- 5 Station
- 6-10 Preset 1-10
- 11 Volume/Enter
- 12 Battery compartment  
(Batteries not included)
- 13 DC jack
- 14 Headphone jack



## 1. Switch on by Main

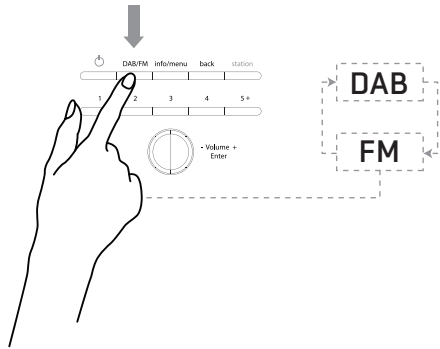


## 2. Switch on by Battery

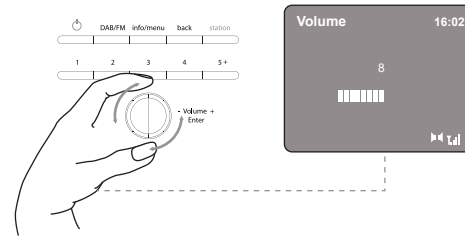


Insert 4 x AA size batteries  
(Not included)

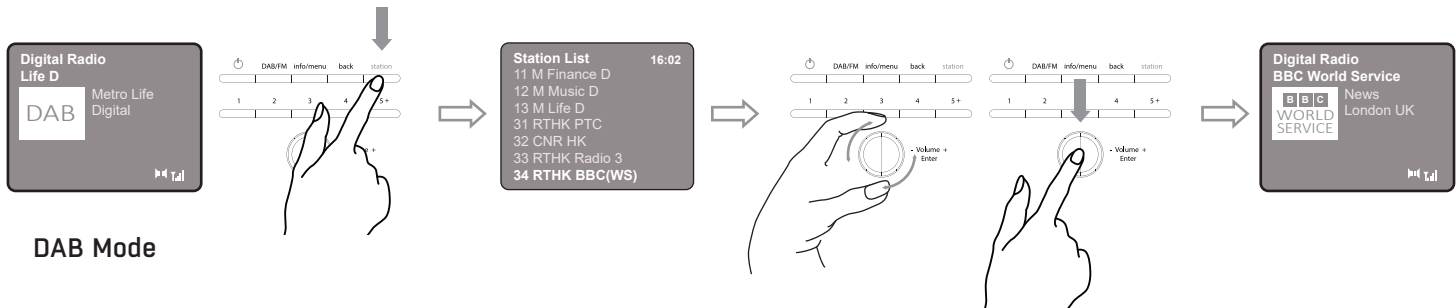
### 3. Mode Change



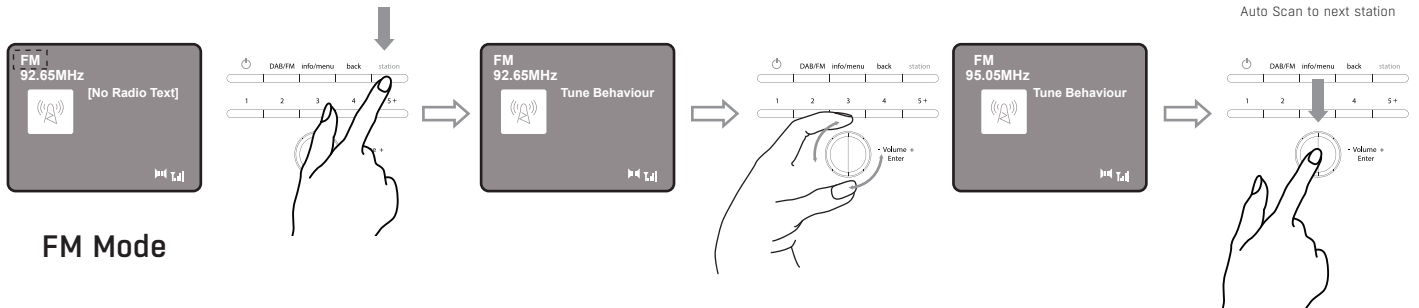
### 4. Volume Control



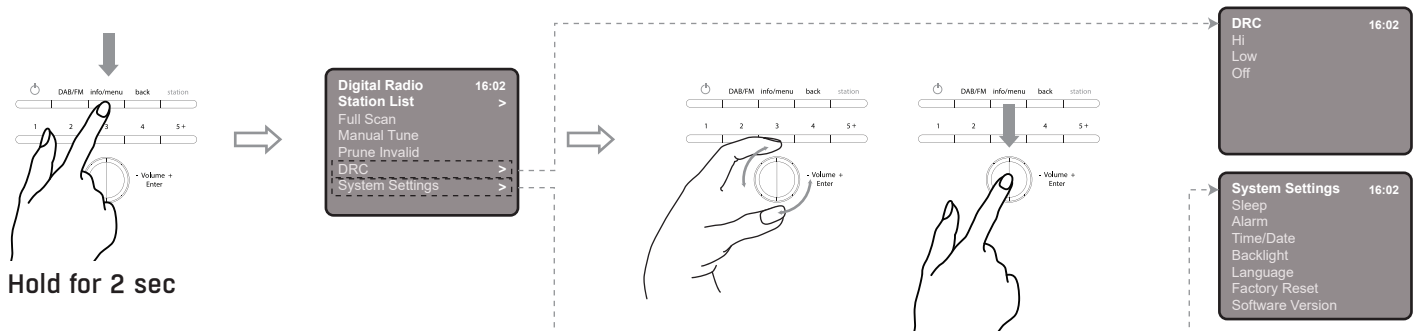
### 5. Change Station (DAB)



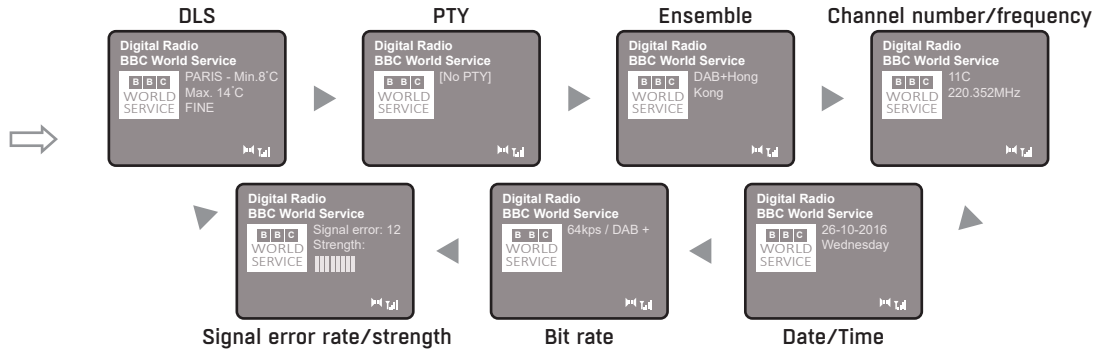
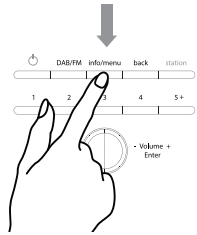
## 6. Change Station (FM)



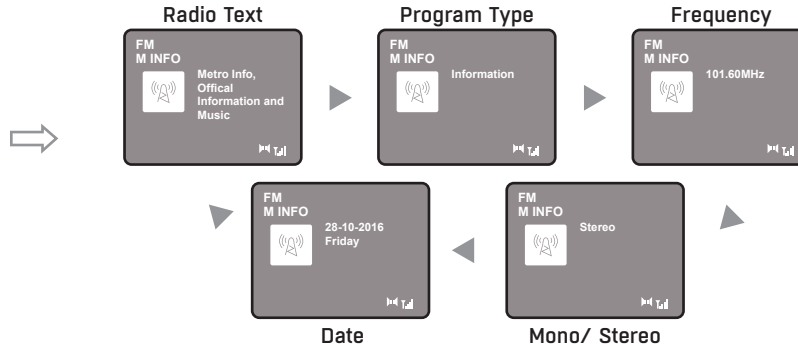
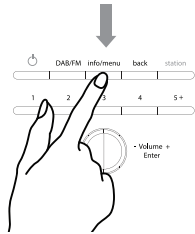
## 7. Menu (DAB)



## 8. Info (DAB)



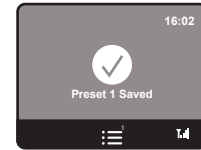
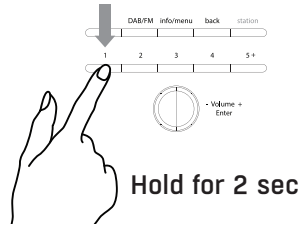
## 8. Info (FM)



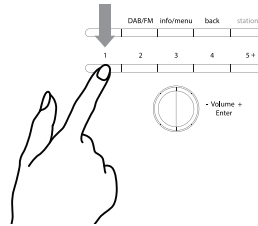
## 9. Store Stations



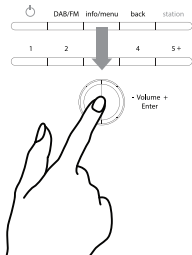
Select the station  
you wish to preset



## 10. Recall Preset Stations

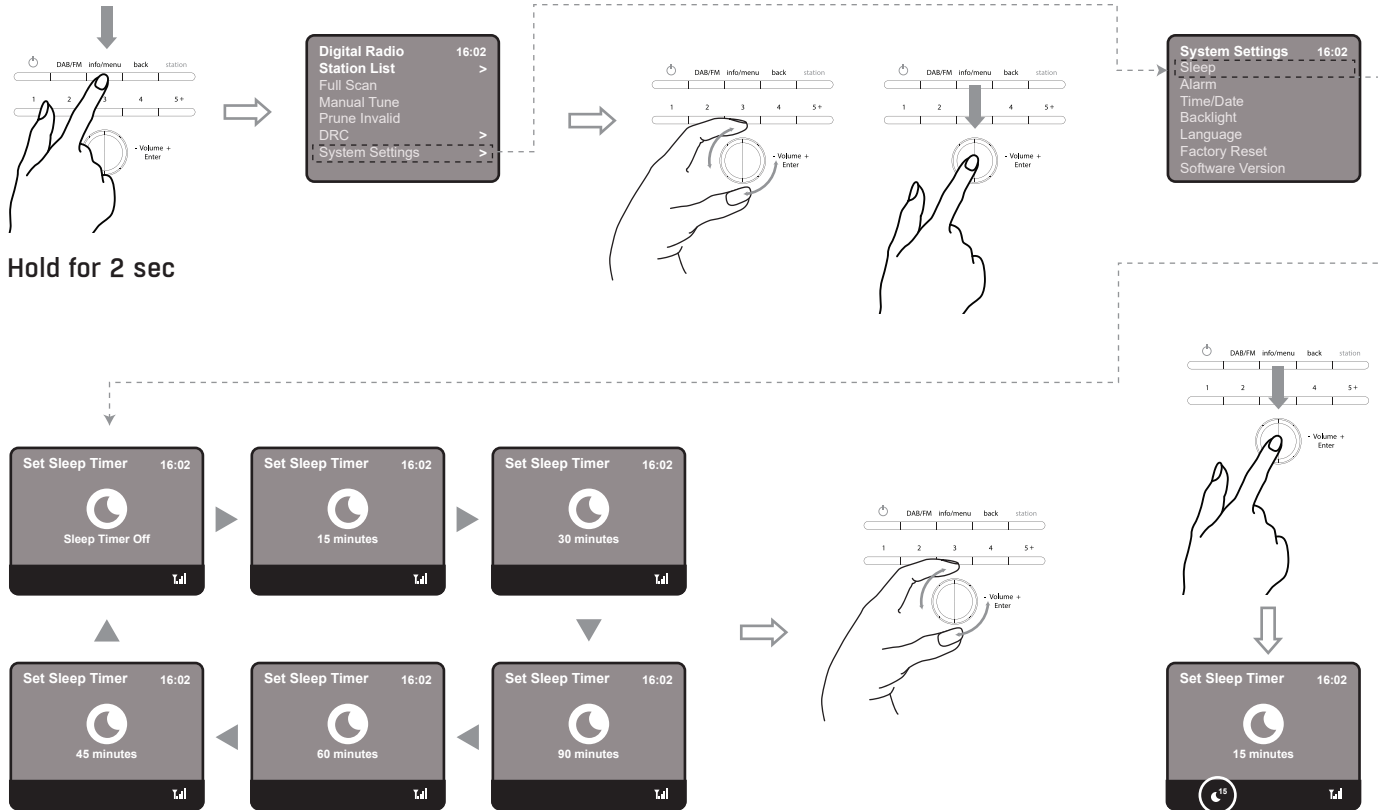


## 11. Slide Show

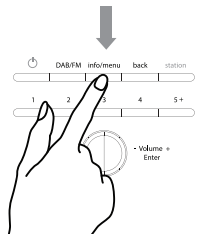




## 12. Set Sleep Time



# 13. Alarm Setting



Hold for 2 sec

Digital Radio 16:02

Station List >

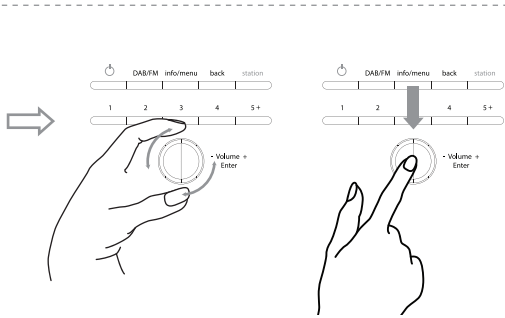
Full Scan

Manual Tune

Prune Invalid

DRC

System Settings >



System Settings 16:02

Sleep

Alarm

Time/Date

Backlight

Language

Factory Reset

Software Version

Alarm 16:02

Alarm 1

Alarm 2

Alarm 1 info. 16:02

Alarm Off

Frequency

Date/ Time Source

Source

Duration

Volume

Frequency 16:02

Daily

Once

Weekends

Weekdays

Time/Date 16:02

24 - 10 - 2016

16 : 02

Source 16:02

Buzzer

Digital Radio

FM

Duration 16:02

15

30

45

60

90

120

Volume 16:02

8

Alarm 1 info. 16:02

Alarm On

Frequency

Date/ Time Source

Source

Duration

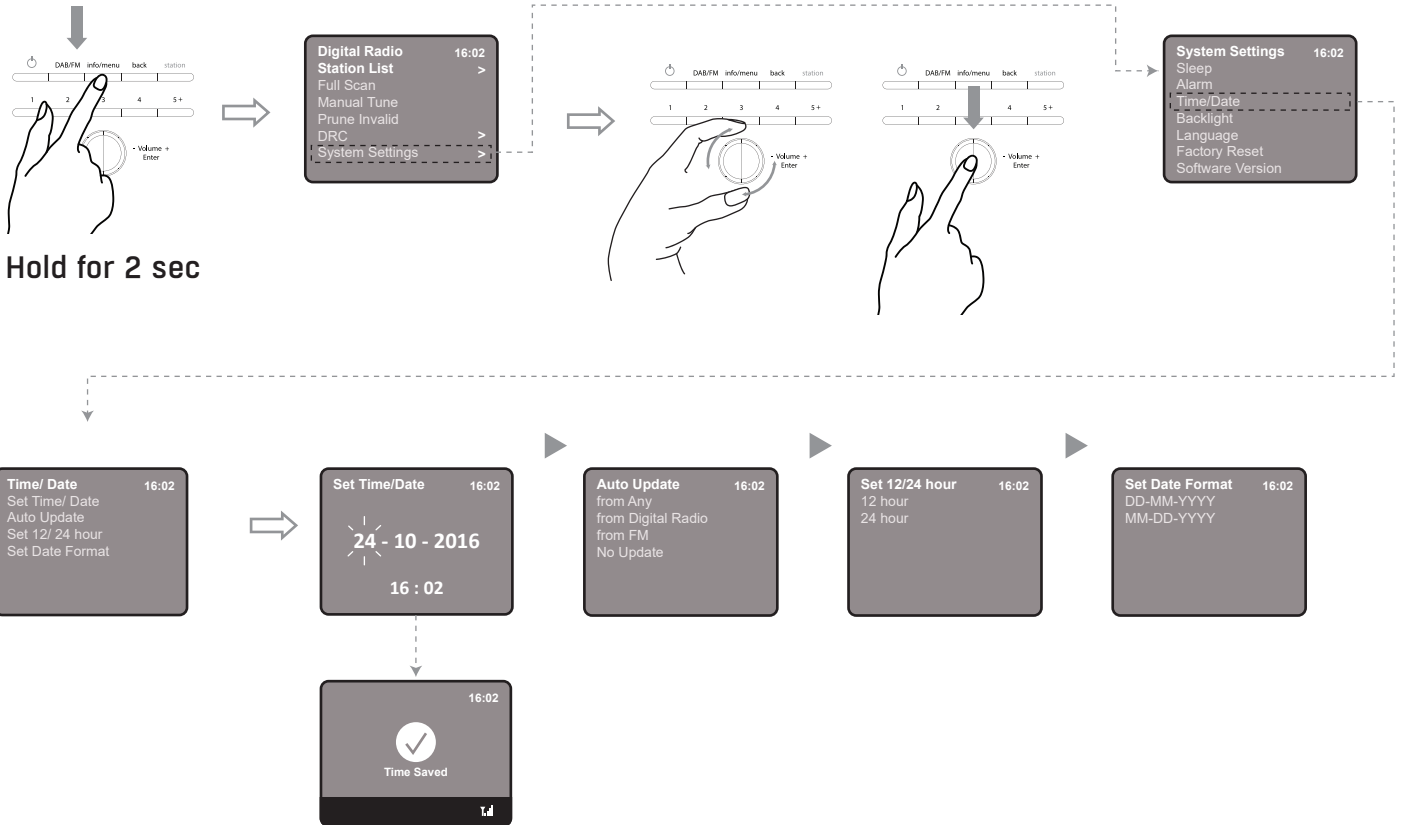
Volume

Digital Radio

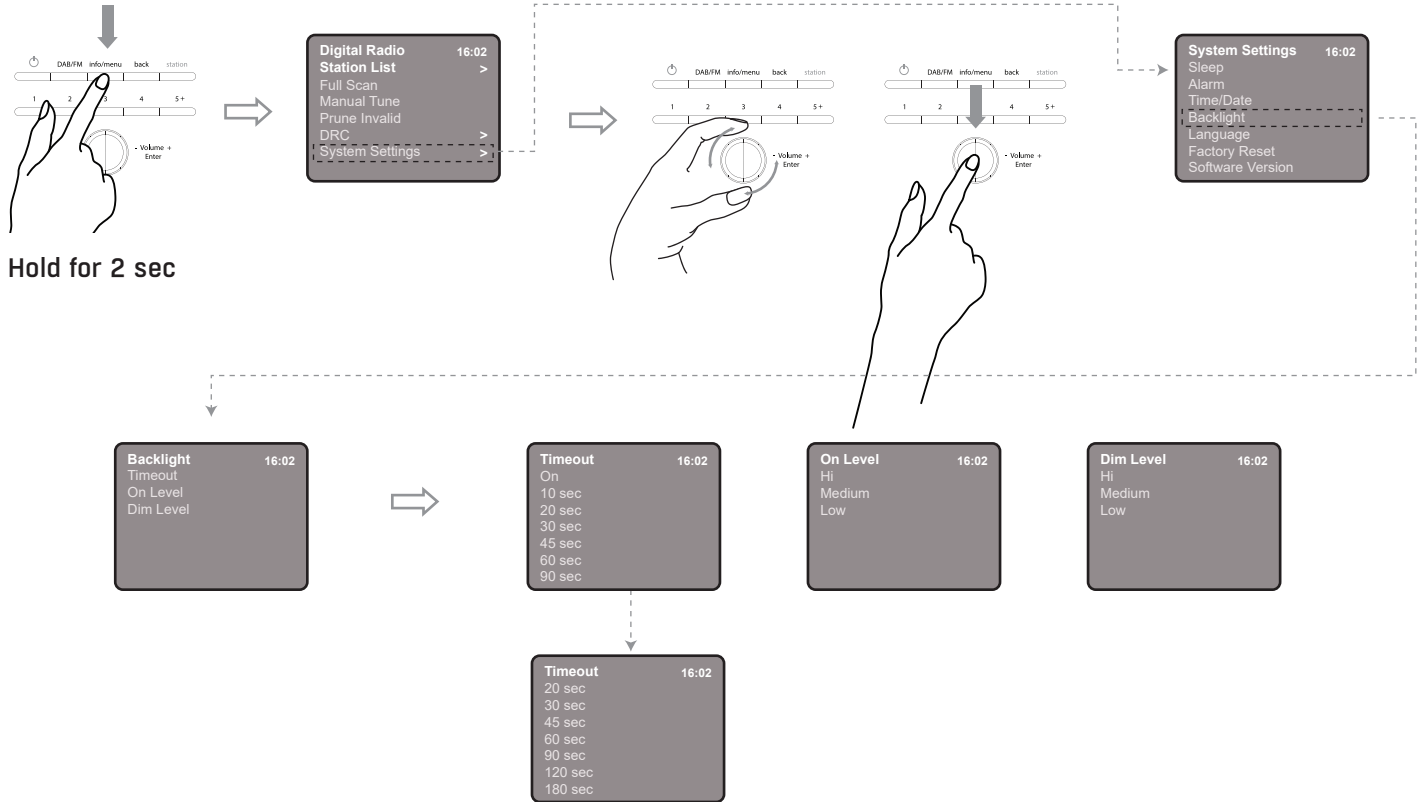
BBC World Service

News London UK

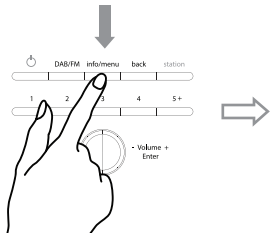
# 14. Time/ Date



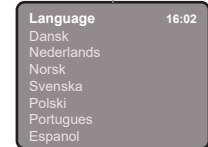
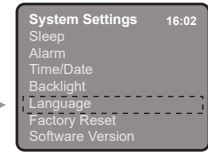
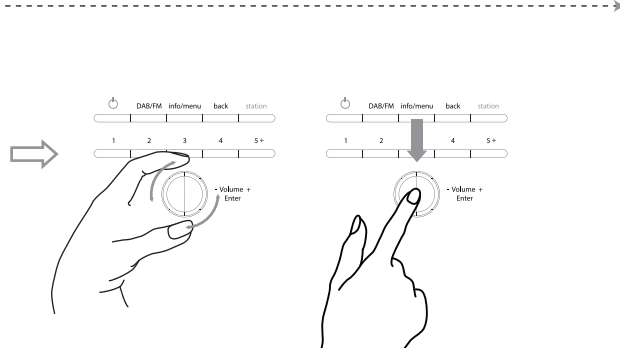
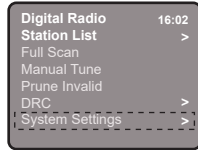
# 15. Backlight



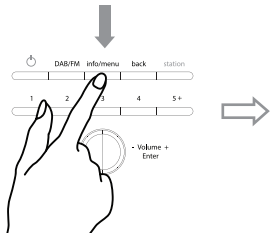
# 16. Language



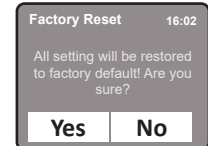
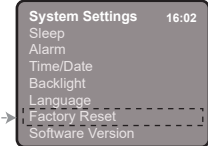
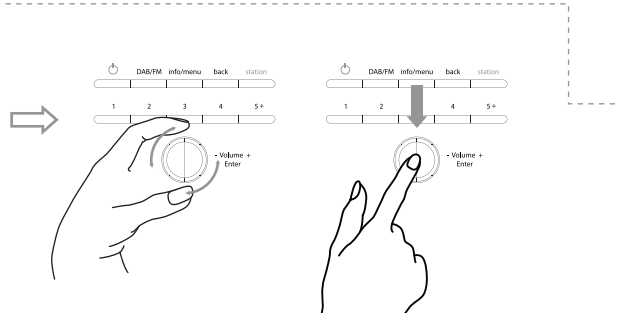
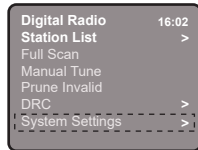
Hold for 2 sec



# 17. Factory Reset



Hold for 2 sec



Note: Factory reset will erase all station lists, settings previously stored

## Trouble Shooting

Problem:	FM Hiss/DAB Burbling/intermittent cut-out/DAB No stations available message
Cause:	Low signal strength
Solution:	Check/move antenna. Move radio. Rescan local (high-strength) stations only. (For DAB, check local coverage at <a href="http://www.ukdigitalradio.com/coverage">www.ukdigitalradio.com/coverage</a> then rescan stations).

## Error messages

'Service not available':	No DAB reception.
'Signal error':	The DAB signal has been interrupted.
'No DAB Station':	The listed station cannot be found. (No Name): The current station does not broadcast an identity name.
'No stations found':	No DAB stations are available, check aerial.
'No RadioText':	No RDS text information is available on this station.
'No PTY':	No RDS programme type information is available.
'No Name':	No RDS station name is being broadcast.

## Specifications

Description:	DAB+/DAB FM Digital Radio
Speaker:	1 x 1W rms
Frequency Ranges:	FM: 87.5-108MHz; DAB/DAB+: 174-240MHz
LCD Display:	2.4 inches colour TFT display
Power Supply:	DC power input: 4 x 1.5V AA-size batteries (Not included) Power adapter: DC 6V 1A (please use our provided adapter)
Dimensions:	220mm x 170mm x 90mm

ALL RIGHTS RESERVED, COPYRIGHT DENVER ELECTRONICS A/S

DENVER®  
denver-electronics.com



Electric and electronic equipment contains materials, components and substances that can be hazardous to your health and the environment, if the waste material (discarded electric and electronic equipment) is not handled correctly.

Electric and electronic equipment is marked with the crossed out trash can symbol, seen below. This symbol signifies that electric and electronic equipment should not be disposed of with other household waste, but should be disposed of separately.

All cities have established collection points, where electric and electronic equipment can either be submitted free of charge at recycling stations and other collection sites, or be collected from the households. Additional information is available at the technical department of your city.

Imported by:

DENVER ELECTRONICS A/S

Omega 5A. Soeften

DK-8382 Hinnerup

Denmark

[www.facebook.com/denverelectronics](http://www.facebook.com/denverelectronics)

