

DENVER®  
denver-electronics.com



facebook.com/denverelectronics

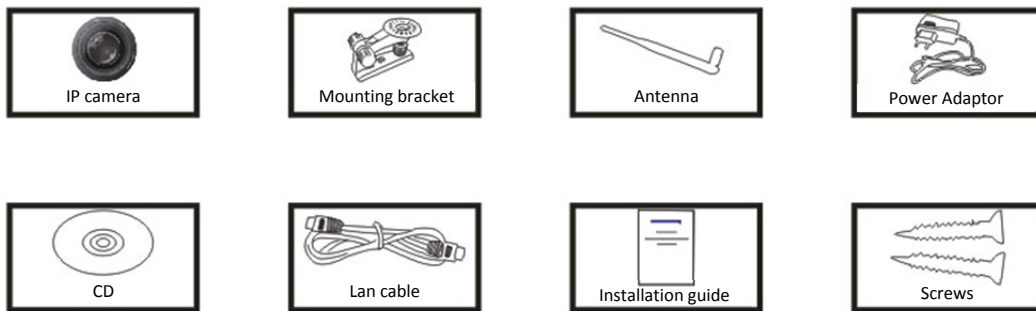



**DENVER IPC-330**



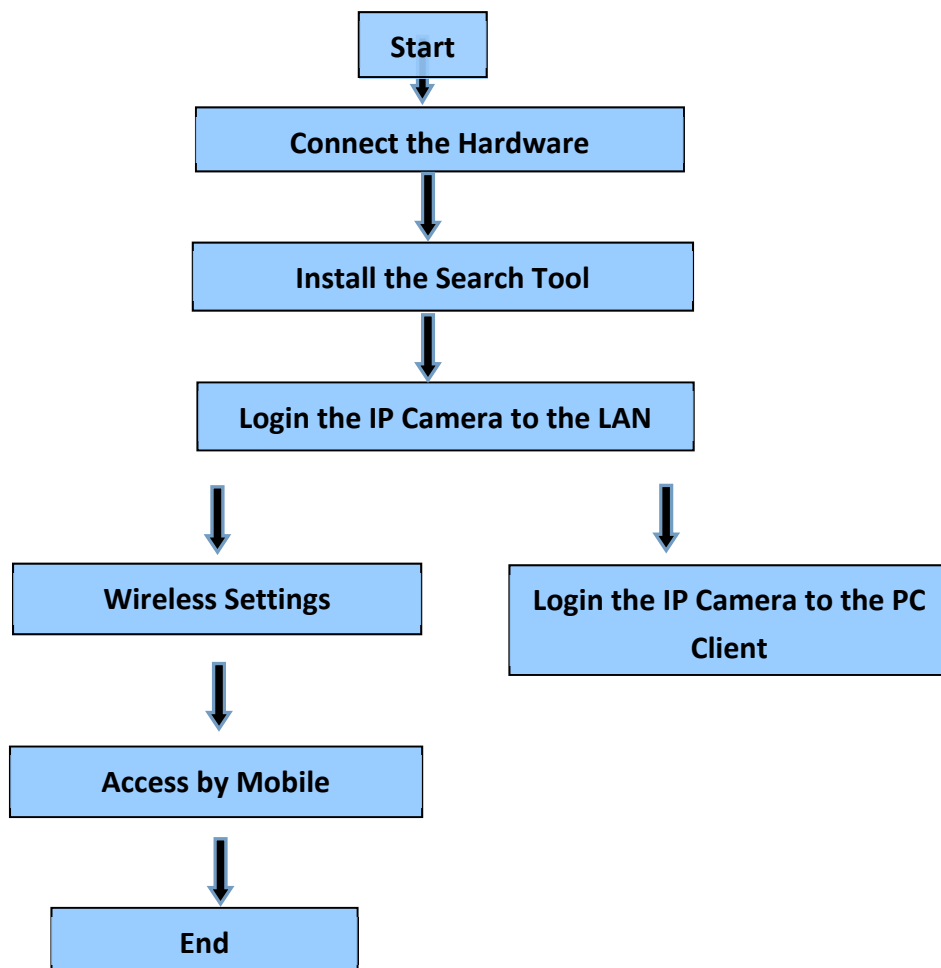
**DENVER IPO-320**


## Pack list:

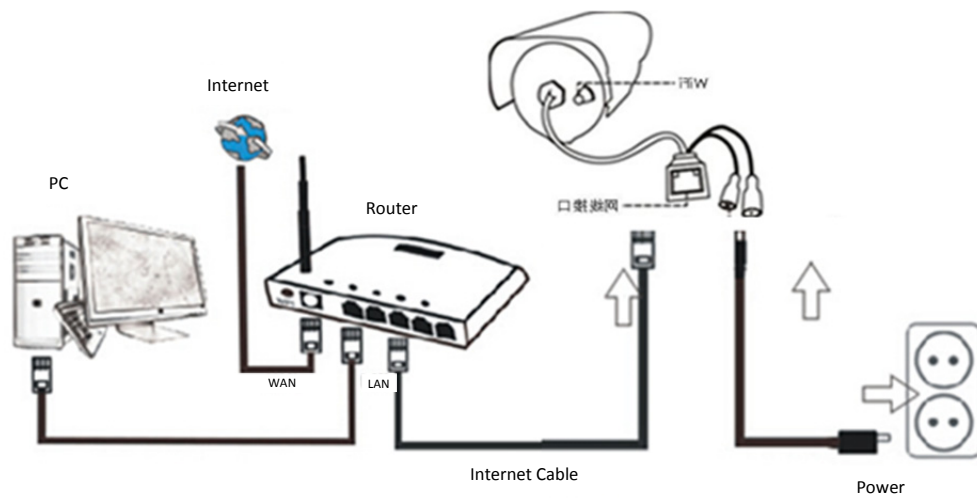
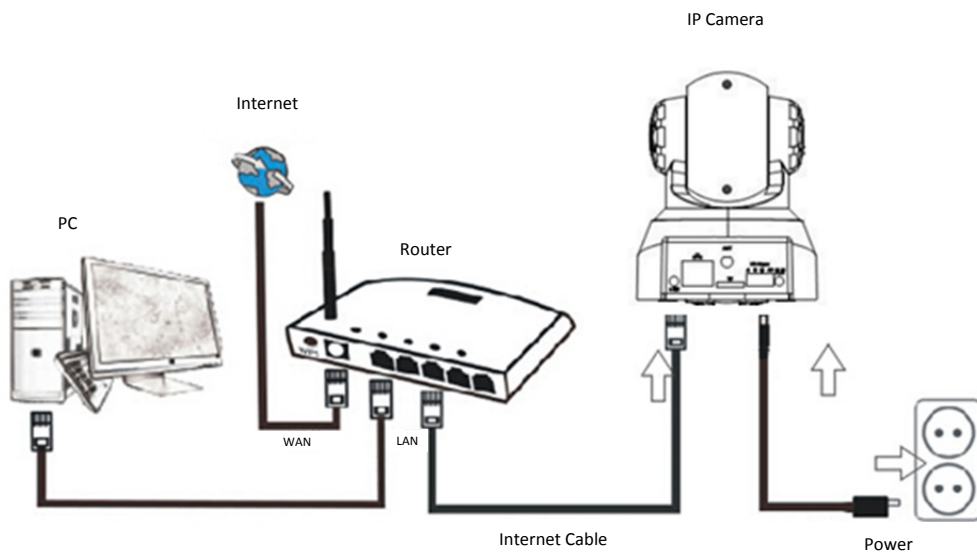


 **Note:** Some models are not equipped with an external antenna

## Installation procedures:



 **Note:** For the first time use of the IP Camera, please refer to the procedures above.



Connect the Camera with Internet cable to the router and with the power to the mains, as shown above.

# 1. Installation of the Search Tool

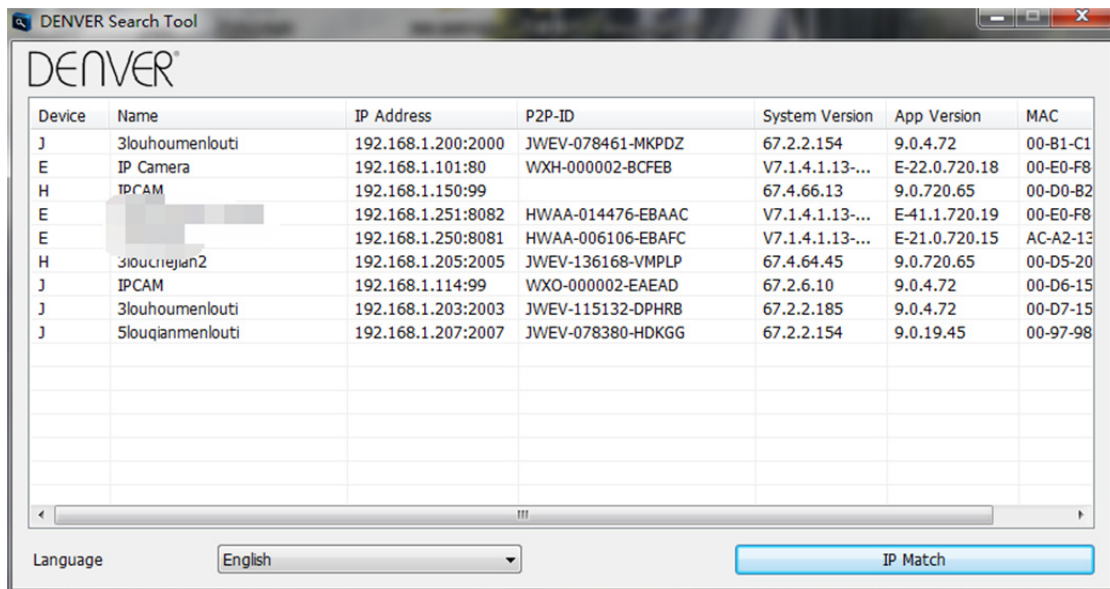


Insert the CD and install the following software:

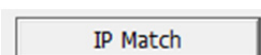
1. Open the file "IPC-330 & IPO-320"- "Browser View":  
Click "OCX setup" — "Next" — "Install" — "Finish"
2. Open the file "Search Tool", copy the "Search Tool" to the desktop and launch it.

## 2. Login IP Camera to the LAN

After hardware was connected properly, launch the search tool, and the IP address of the camera will be displayed automatically.



 **Note:** If the Search Tool displays Subnet mask does not match, please click on



Double click the camera IP address in the search tool.

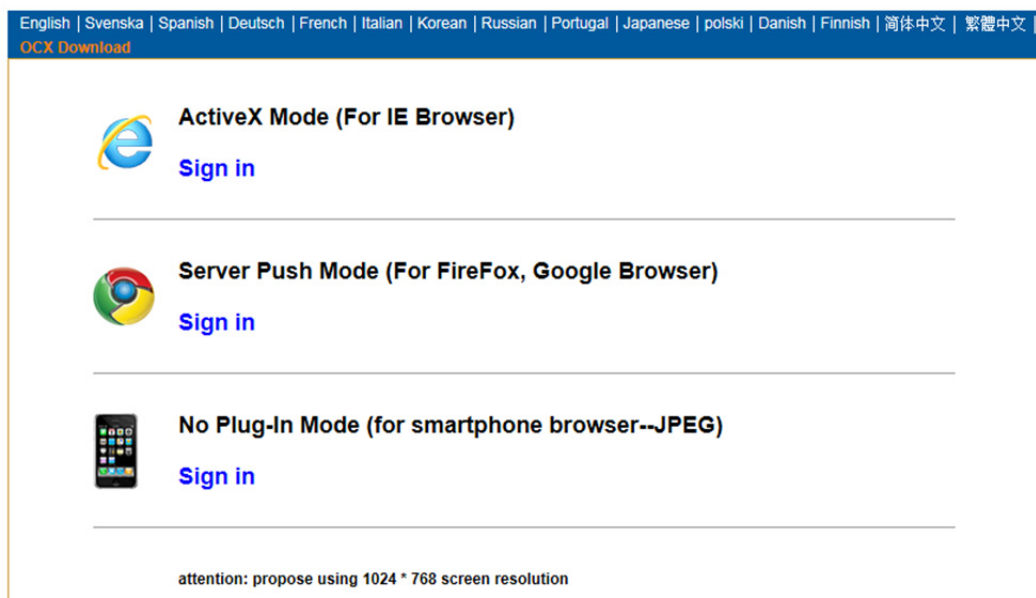
A Sign-in interface will be shown in your default browser, like below:



 **Note: User: admin Password: None/blank**

(Please change the account info for safety after login)

After you entered the correct user name and password, this login screen will be displayed.  
(It supports 6 visitors to view online at the same time)



Note:


- 1) If you use the IE browser, please choose the first sign-in mode (ActiveX Mode) to login. If you use other browsers, such as Firefox, Safari or Google Chrome, you should choose the second sign-in mode (Server Push Mode). Don't choose the wrong mode, or you will not see the video. On the other hand, using Server Push Mode, you lose functions like Recording, 2-way audio, IR control.


- 2) If you use the IE browser to connect the camera for the first time, maybe no image will be displayed, instead a an ActiveX prompt will appear, please click the prompt and choose Run Add- on, refresh the IE interface, and login the camera again, then you will see the live video.
  - A. Click on “OCX download” to download and install it.
  - B. Refresh the webpage and login again, the camera video will be displayed as below

## Live video



## 3. Wireless Setting

- 1) Click on the  icon to access the “Wireless LAN” settings
- 2) Search the WIFI signals and choose the desired SSID
- 3) Make sure that all parameters are the same like in your router, enter the WIFI network key.
- 4) After 30 seconds, click on “Check”, a notification screen will show you if the WIFI settings are correct
- 5) If correct, just go back to select “Apply”, then disconnect the network cable.

 **Note:** If the camera IP Address cannot be found by the search tool. please connect the internet cable again to check the WIFI settings

Device Status	
Device Firmware Version	67.2.6.10
Device Embedded Web UI Version	9.0.4.72
Alias	IPCAM
Device ID	WXO-000002-EAEAD
Alarm Status	None
UPnP Statusupnp	No Action
DDNS Status	No Action
MAC	00:D6:15:04:21:FD
WIFI MAC	00:D6:15:04:21:FE
sd total capacity(M)	0 M
sd remaining capacity(M)	0 M
sd state	sd card is not inserted
Language	English <input type="button" value="v"/>


<a href="#">Device information</a>
<a href="#">Alias Settings</a>
<a href="#">Device date&amp;Time Settings</a>
<a href="#">Users Settings</a>
<a href="#">Multi-Device Settings</a>
<a href="#">Basic Network Settings</a>
<a href="#">Wireless Lan Settings</a>
<a href="#">DDNS Service Settings</a>
<a href="#">Mail Service Settings</a>
<a href="#">Ftp Service Settings</a>
<a href="#">Alarm Service Settings</a>
<a href="#">PTZ Settings</a>
<a href="#">Local record path</a>
<a href="#">Upgrade Device Firmware</a>
<a href="#">Record Schedule</a>
<a href="#">Alarm Log</a>
<a href="#">Back</a>

### Checking the WIFI Signal Connection Status

Checking WiFi, please wait about 30 seconds.

Connected to WiFi successfully.  
Select "Apply" to save these settings.

## 4. DDNS Service Settings

- 1). Click on the  icon to access to "DDNS Service Settings".
- 2). Choose the DDNS server, input the DDNS user name and password.
- 3). Submit, refresh, then DDNS status will be shown as "DDNS Succeed".

DDNS Service Settings	
DDNS Service	<input type="text" value="vipcam.org"/>
DDNS User	<input type="text" value="G1200"/>
DDNS Password	<input type="password" value="*****"/>
DDNS Status	DDNS Succeed
<small>proxy config is needed if the device is in China Mainland or HongKong</small>	
<input type="button" value="Submit"/> <input type="button" value="Refresh"/>	

Thus the remote address is <http://G1200.vipcam.org>. For its functionality you must use the port forwarding function of your router. By this you will create a virtual server; enter the IP address and port of your camera.

## 5. Mail Service Settings and Alarm Service Settings

- 1). The Mail service settings are a requirement for the alarm function. If your camera will be activated it will send you an email with photos attached. For this, you must assure that the mail service is configured correctly and successfully tested. Here an example for Gmail.

Mail Service Settings	
Sender	.....@gmail.c
SMTP Server	smtp.gmail.com Please select
SMTP Port	465
Need Authentication	<input checked="" type="checkbox"/>
SSL	TLS
SMTP User	v.....@gmail.c
SMTP Password	.....
Receiver 1	v.....@gmail.c
Receiver 2	.....@qq.com
Receiver 3	
Receiver 4	
Test	Please set at first, and then test
Submit	Refresh

- Device information
- Alias Settings
- Device date&Time Settings
- Users Settings
- Multi-Device Settings
- Basic Network Settings
- Wireless Lan Settings
- UPnP Settings
- DDNS Service Settings
- Mail Service Settings
- Ftp Service Settings
- Alarm Service Settings
- PTZ Settings
- Local record path
- Upgrade Device Firmware
- Alarm Log
- Back

It will send an email if the camera is activated.

### You must enter the following information:

**Sender:** Enter your email address

**Receiver:** Enter your email address or a different email address

**SMTP user:** Enter the email username

**SMTP password:** Enter your email password

**Note:** This function only works if the IP camera is accessed via the network. If you use Gmail, the port should be configured as 465, SSL should be TLS. The most important, make sure that your Gmail has SMTP enabled.

It will send you a notification as soon the camera will be activated (depends on the model) Alarm Service Settings, please use the same settings like in the screenshot below:



Alarm Service Settings	
Motion Detect Armed	<input checked="" type="checkbox"/>
Motion Detect Sensibility	5 <small>The smaller the value, the more sensitive</small>
Alarm Input Armed	<input type="checkbox"/>
Alarm trigger event	
Alarm preset linkage	None
IO Linkage on Alarm	<input type="checkbox"/>
Send Alarm Notification by Mail	<input checked="" type="checkbox"/>
Upload Image on Alarm	<input checked="" type="checkbox"/>
Upload Interval (Seconds)	5
Alarm Arming Time	
Scheduler	<input checked="" type="checkbox"/>
select all	<input checked="" type="checkbox"/>
Day	0 1 2 3 4 5 6 7 8 9 10 11 12 13 14 15 16 17 18 19 20 21 22 23
Sun	
Mon	
Tue	
Wed	
Thu	
Fri	
Sat	
<input type="button" value="Submit"/> <input type="button" value="Refresh"/>	

- Device information
- Alias Settings
- Device date&Time Settings
- Users Settings
- Multi-Device Settings
- Basic Network Settings
- Wireless Lan Settings
- UPnP Settings
- DDNS Service Settings
- Mail Service Settings
- Ftp Service Settings
- Alarm Service Settings**
- PTZ Settings
- Local record path
- Upgrade Device Firmware
- Alarm Log
- Back

If you let the camera page (browser) on, if the come will be activated, 1 minute will be recorded.

## 6. Record & Capture Path

Record & Capture Path	
Record & Capture Path	D:\ <input type="button" value="select..."/>
Record file length(MB)	100 <small>Least 100MB , MAX 1000MB</small>
Record time length(Minute)	5 <small>Least 5 Minutes , MAX 120 Minutes</small>
Reserved disk space(MB)	200 <small>Least 200MB</small>
Record cover	<input type="checkbox"/>
<input type="button" value="Submit"/> <input type="button" value="Refresh"/>	

- Record & Capture Path: Where to store the files, video and photos. (If you can't choose this, pay attention to your PC OS and IE version, please use the IE browser.)
- Record file length: At least 100MB
- Record time length: At least 5 minutes.
- Reserved disk space: If your pc disk space is less than 200MB, stop recording.
- Record cover: Delete the old files when the disk capacity is almost depleted.

## 7. Record Schedule (For IPC-330 with SD card recording function)

This section explains the **SD card recording settings**. If the SD card has been inserted, the capacity of the card will be displayed. But at first, you need to format it. It includes: Record coverage, Record time, Timer recording. The settings are like follows:

Record Schedule	
sd total capacity(M)	0 M
sd remaining capacity(M)	0 M
sd state	sd card is not inserted <a href="#">Format</a>
Record coverage	<input checked="" type="checkbox"/>
Record time(minute)	10 Recording time range: 5~180 minutes
Timer recording	<input checked="" type="checkbox"/>
select all	<input checked="" type="checkbox"/>
Day	0 1 2 3 4 5 6 7 8 9 10 11 12 13 14 15 16 17 18 19 20 21 22 23
Sun	
Mon	
Tue	
Wed	
Thu	
Fri	
Sat	
<a href="#">Submit</a> <a href="#">Refresh</a>	

- Device information
- [Alias Settings](#)
- [Device date&Time Settings](#)
- [Users Settings](#)
- [Multi-Device Settings](#)
- [Basic Network Settings](#)
- [Wireless Lan Settings](#)
- [UPnP Settings](#)
- [DDNS Service Settings](#)
- [Mail Service Settings](#)
- [Ftp Service Settings](#)
- [Alarm Service Settings](#)
- [PTZ Settings](#)
- [Local record path](#)
- [Upgrade Device Firmware](#)
- [Record Schedule](#)
- [Alarm Log](#)
- [Back](#)



Record coverage: Delete old files when the SD card is nearly full.  
 Record time: Create a video file every 10 minutes.  
 Timer recording: Set the time, select all, store recording to the SD card.

You can playback the video online with **IE browser**. Press the "Enter" button, choose the last sign in code:



Recording file list
20130321150119_100.h264

[Refresh](#)

## 8. Upgrade Device Firmware & System Log

- 1). With this option you may reboot the camera, restore it to the factory settings, and upgrade the system.

Upgrade Device Firmware	
Restore Factory Settings	<input type="button" value="Restore Factory Settings"/>
Reboot Device	<input type="button" value="Reboot Device"/>
Upgrade Device Firmware	<input type="text" value="浏览..."/> <input type="button" value="Upgrade"/>
Upgrade Device Embedded Web UI	<input type="text" value="浏览..."/> <input type="button" value="Upgrade"/>

<a href="#">Device information</a>
<a href="#">Alias Settings</a>
<a href="#">Device date&amp;Time Settings</a>
<a href="#">Users Settings</a>
<a href="#">Multi-Device Settings</a>
<a href="#">Basic Network Settings</a>
<a href="#">Wireless Lan Settings</a>
<a href="#">DDNS Service Settings</a>
<a href="#">Mail Service Settings</a>
<a href="#">Ftp Service Settings</a>
<a href="#">Alarm Service Settings</a>
<a href="#">PTZ Settings</a>
<a href="#">Local record path</a>
<a href="#">Upgrade Device Firmware</a>
<a href="#">Record Schedule</a>
<a href="#">Alarm Log</a>
<a href="#">Back</a>

- 2). The Alarm log is provided for administrators to monitor the alarm events

Alarm Log
gpio alarm 2015-09-10 18:02:29
gpio alarm 2015-09-10 18:01:18
gpio alarm 2015-09-10 18:00:08
gpio alarm 2015-09-10 17:58:57
gpio alarm 2015-09-10 17:57:47
gpio alarm 2015-09-10 17:56:36
gpio alarm 2015-09-10 17:55:26
gpio alarm 2015-09-10 17:54:16
gpio alarm 2015-09-10 17:53:05
gpio alarm 2015-09-10 17:51:54
gpio alarm 2015-09-10 17:50:43
gpio alarm 2015-09-10 17:49:33
gpio alarm 2015-09-10 17:48:23
gpio alarm 2015-09-10 17:47:12
gpio alarm 2015-09-10 17:46:02
gpio alarm 2015-09-10 17:44:51
gpio alarm 2015-09-10 17:43:41
gpio alarm 2015-09-10 17:42:30
gpio alarm 2015-09-10 17:41:19
gpio alarm 2015-09-10 17:40:09
gpio alarm 2015-09-10 17:38:59
gpio alarm 2015-09-10 17:37:48
gpio alarm 2015-09-10 17:36:38
gpio alarm 2015-09-10 17:35:27
gpio alarm 2015-09-10 17:34:16
gpio alarm 2015-09-10 17:33:06
gpio alarm 2015-09-10 17:31:55
gpio alarm 2015-09-10 17:30:45
gpio alarm 2015-09-10 17:29:35
gpio alarm 2015-09-10 17:28:24

<a href="#">Device information</a>
<a href="#">Alias Settings</a>
<a href="#">Device date&amp;Time Settings</a>
<a href="#">Users Settings</a>
<a href="#">Multi-Device Settings</a>
<a href="#">Basic Network Settings</a>
<a href="#">Wireless Lan Settings</a>
<a href="#">DDNS Service Settings</a>
<a href="#">Mail Service Settings</a>
<a href="#">Ftp Service Settings</a>
<a href="#">Alarm Service Settings</a>
<a href="#">PTZ Settings</a>
<a href="#">Local record path</a>
<a href="#">Upgrade Device Firmware</a>
<a href="#">Record Schedule</a>
<a href="#">Alarm Log</a>
<a href="#">Back</a>

# 9. Basic Network Settings & PTZ Settings

1). Through setting to set some PTZ function

PTZ Settings	
against pre-bit	<input type="checkbox"/>
Call Preset on boot	1
PTZ speed	10
Cruise Views	2

- Device information
- Alias Settings
- Device date&Time Settings
- Users Settings
- Multi-Device Settings
- Basic Network Settings
- Wireless Lan Settings
- DDNS Service Settings
- Mail Service Settings
- Ftp Service Settings
- Alarm Service Settings
- PTZ Settings**
- Local record path
- Upgrade Device Firmware
- Record Schedule
- Alarm Log
- Back

2). You may modify the network Settings of IP address and gateway, and the port number

Basic Network Settings	
Obtain IP from DHCP Server	<input type="checkbox"/>
IP Addr	192.168.1.178
Subnet Mask	255.255.255.0
Gateway	192.168.1.1
DNS Server2	202.96.134.33
Http Port	99

- Device information
- Alias Settings
- Device date&Time Settings
- Users Settings
- Multi-Device Settings
- Basic Network Settings
- Wireless Lan Settings
- DDNS Service Settings
- Mail Service Settings
- Ftp Service Settings
- Alarm Service Settings
- PTZ Settings
- Local record path
- Upgrade Device Firmware
- Record Schedule
- Alarm Log
- Back

# 10. Alias setting & Device Date & Time Setting

- 1) You can choose any NTP server and click on "Submit"
- 2) Choose the desired time zone you want and click on "Submit" to activate it

Device date&Time Settings	
Device Clock Time	Mon, 21 Sep 2015 13:11:05 UTC
Device Clock Timezone	(GMT +08:00) Beijing, Singapore, Taipei
Sync with NTP Server	<input checked="" type="checkbox"/>
Ntp Server	time.nist.gov
<input type="button" value="Sync with PC Time"/>	
<input type="button" value="Submit"/> <input type="button" value="Refresh"/>	

[Device information](#)  
[Alias Settings](#)  
[Device date&Time Settings](#)  
[Users Settings](#)  
[Multi-Device Settings](#)  
[Basic Network Settings](#)  
[Wireless Lan Settings](#)  
[DDNS Service Settings](#)  
[Mail Service Settings](#)  
[Ftp Service Settings](#)  
[Alarm Service Settings](#)  
[PTZ Settings](#)  
[Local record path](#)  
[Upgrade Device Firmware](#)  
[Record Schedule](#)  
[Alarm Log](#)  
[Back](#)

- 3) The display name of the camera

Alias Settings	
Alias	IPCAM
<input type="button" value="Submit"/> <input type="button" value="Refresh"/>	

[Device information](#)  
[Alias Settings](#)  
[Device date&Time Settings](#)  
[Users Settings](#)  
[Multi-Device Settings](#)  
[Basic Network Settings](#)  
[Wireless Lan Settings](#)  
[DDNS Service Settings](#)  
[Mail Service Settings](#)  
[Ftp Service Settings](#)  
[Alarm Service Settings](#)  
[PTZ Settings](#)  
[Local record path](#)  
[Upgrade Device Firmware](#)  
[Record Schedule](#)  
[Alarm Log](#)  
[Back](#)

# 11. User Setting & Multi-Device Setting

## 1) Modification of the user password

Users Settings		
	User	Password
Visitor	<input type="text"/>	<input type="text"/>
Operator	<input type="text"/>	<input type="text"/>
Administrator	admin	••••

[Device information](#)  
[Alias Settings](#)  
[Device date&Time Settings](#)  
[Users Settings](#)  
[Multi-Device Settings](#)  
[Basic Network Settings](#)  
[Wireless Lan Settings](#)  
[DDNS Service Settings](#)  
[Mail Service Settings](#)  
[Ftp Service Settings](#)  
[Alarm Service Settings](#)  
[PTZ Settings](#)  
[Local record path](#)  
[Upgrade Device Firmware](#)  
[Record Schedule](#)  
[Alarm Log](#)  
[Back](#)

- 2) Refresh the device in LAN search to find add another camera
- 3) Click on “the 2<sup>nd</sup> device” or any other device
- 4) Click on the LAN equipment added in the search, enter the user name and password
- 5) Click on “Submit”

Multi-Device Settings	
Device List in Lan	<div style="border: 1px solid gray; height: 40px; width: 100%;"></div> <input type="button" value="Refresh"/>
The 1st Device	This Device
The 2nd Device	IPCAM(192.168.1.154)
The 3rd Device	None
The 4th Device	None
The 5th Device	None
The 6th Device	None
The 7th Device	None
The 8th Device	None
The 9th Device	None

attention: If you want to access the device from internet, be sure the host and port that you set can be accessed from internet.


[Device information](#)  
[Alias Settings](#)  
[Device date&Time Settings](#)  
[Users Settings](#)  
[Multi-Device Settings](#)  
[Basic Network Settings](#)  
[Wireless Lan Settings](#)  
[DDNS Service Settings](#)  
[Mail Service Settings](#)  
[Ftp Service Settings](#)  
[Alarm Service Settings](#)  
[PTZ Settings](#)  
[Local record path](#)  
[Upgrade Device Firmware](#)  
[Record Schedule](#)  
[Alarm Log](#)  
[Back](#)

## FAQ:

### A. Password forgotten

- 1) Reset your camera. While the power is on, you must press the RESET button for 10 seconds. The button you will find at the bottom of the camera. With outdoor cameras the white reset button is located at the end of the power cord.
- 2) After the reset is completed, the camera is reset to the factory settings, then the username and the password is **"admin"**.

### B. No video, only a black screen, is displayed in the browser

 Note: If there is still no live video after running OCX ActiveX, please try to enable the ActiveX options in the IE security settings by performing the following steps:

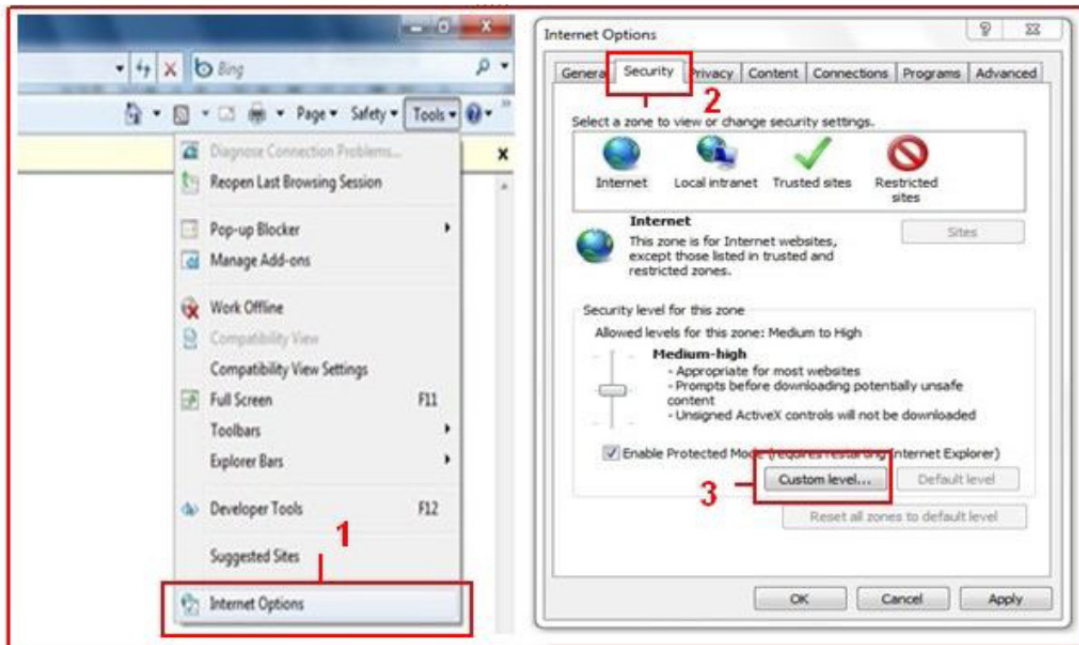
1. Deactivate the firewall of your computer.
2. Change the ActiveX settings in "IE" browser > "Tool" > "Internet Options" > "Security" > "Custom Level" > "ActiveX control and Plug-ins", all ActiveX options should be configured as "Enable":

Especially:

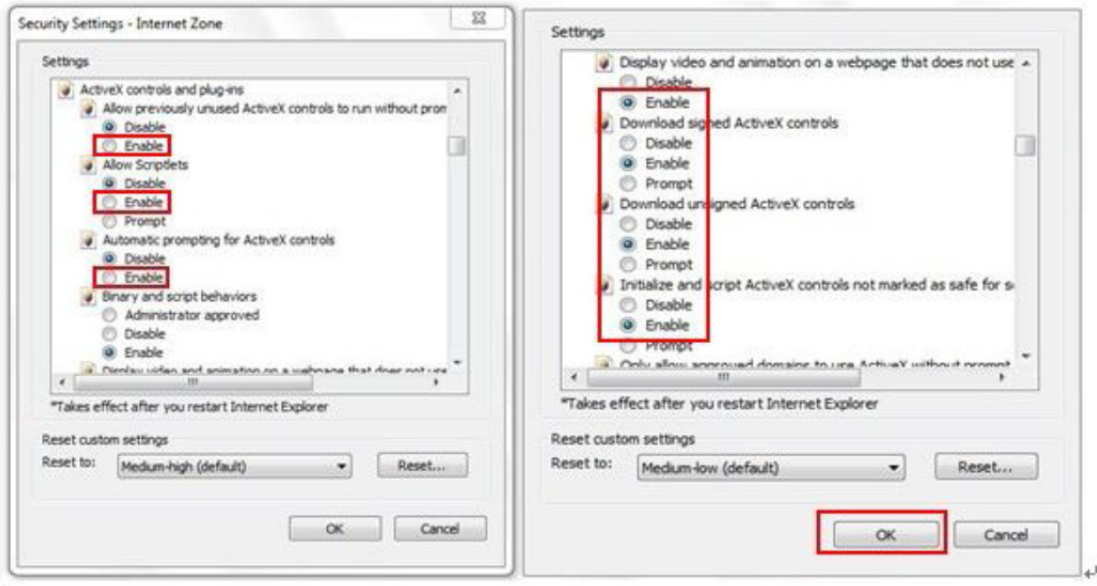
Enable: Download unsigned ActiveX controls

Enable: Initialize and script ActiveX controls not marked as safe

Enable: Run ActiveX controls and plug-ins



a.



b.



ALL RIGHTS RESERVED, COPYRIGHT DENVER ELECTRONICS A/S

# DENVER®

[www.denver-electronics.com](http://www.denver-electronics.com)



Electric and electronic equipment and included batteries contains materials, components and substances that can be hazardous to your health and the environment, if the waste material (discarded electric and electronic equipment and batteries) is not handled correctly.

Electric and electronic equipment and batteries is marked with the crossed out trash can symbol, seen below. This symbol signifies that electric and electronic equipment and batteries should not be disposed of with other household waste, but should be disposed of separately.

As the end user it is important that you submit your used batteries to the appropriate and designated facility. In this manner you make sure that the batteries are recycled in accordance with legislature and will not harm the environment.

All cities have established collection points, where electric and electronic equipment and batteries can either be submitted free of charge at recycling stations and other collection sites, or be collected from the households. Additional information is available at the technical department of your city.

Imported by:  
DENVER ELECTRONICS A/S  
Stavneagervej 22  
DK-8250 Egaa  
Denmark  
[www.facebook.com/denverelectronics](https://www.facebook.com/denverelectronics)

Hereby, Inter Sales A/S, declares that this tablet DENVER (DENVER IPC-330 and DENVER IPO-320) is in compliance with the essential requirements and other relevant provisions of Directive 1999/5/EC.

A copy of the Declaration of Conformity may be obtained at  
Inter Sales A/S  
Stavneagervej 22  
DK-8250 Egaa  
Denmark