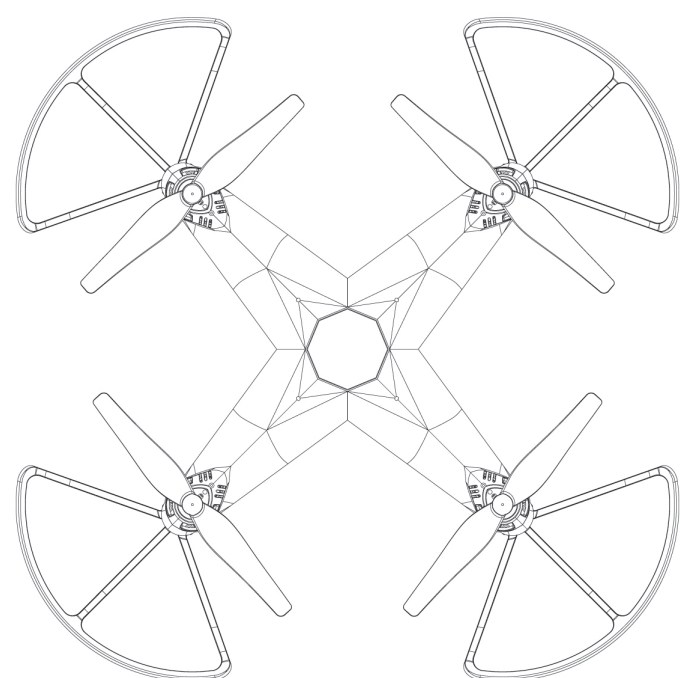


USER'S MANUAL

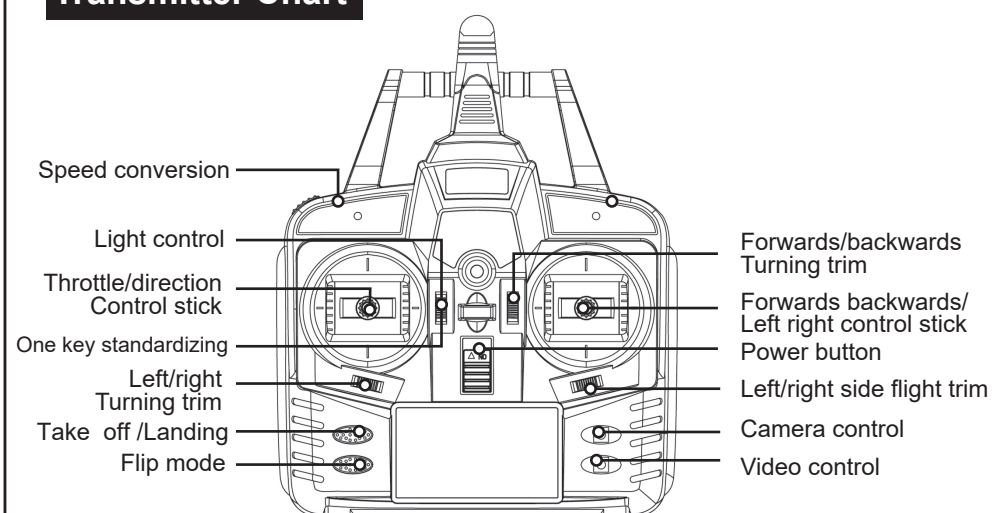
Denver DCH-640



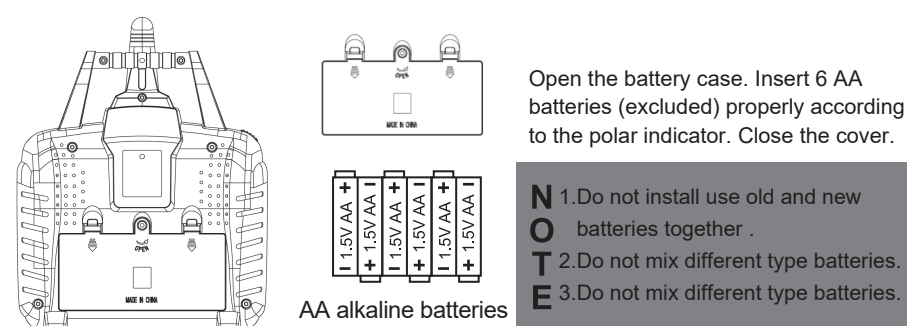
2.4GHZ EDITION
WWW.DENVER-ELECTRONICS.COM
Please read this instruction manual carefully before start using the product.

Suitable for ages 14+

Transmitter Chart



Transmitter battery installation



Safety regulations:

1. Please keep small parts of aircraft away from children.
2. The aircraft have strong power, please turn the control stick slowly, speed too fast may get the aircraft damaged.
3. After the flight, you need to turn off the transmitter off and then turn off aircraft off.
4. Do not put the battery into high-temperature environment (like fire or electric apparatus)
5. Please keep 2-3m distance from crowds avoid the aircraft landing hurt people.
6. Accompanied children need adult to sure the aircraft in the safety range of user.
7. Do not reuse non-rechargeable battery, insert/pluck batteries properly according to the polar indicator, do not install use old and new batteries together and mix different type batteries.
8. When you didn't use aircraft in a long time, please turn transmitter and aircraft off, put out the batteries to avoid battery leakage.
9. Please take care the batteries to avoid it is short out.

-2-

Precautions for use of lithium battery:

- There are certain risks to use lithium battery, which may give rise to personal injuries and property losses. Users shall undertake all corresponding responsibilities themselves. Manufacturer and dealer shall neither take control over usage of batteries (charging, discharging and storage), nor bear responsibilities concerned for any personal injuries and property losses caused thereby.
- In case of leakage of batteries, it is necessary to avoid liquid contacting skin and eyes. In case of contacting with skin, please wash it immediately with soap and clean water. In case of contacting with eyes, please wash eyes with large quantities of water and seek medical care immediately.
- In case of any suspicious odor, noise or fumes coming from chargers, please unplug it at once. Be sure to strictly observe the following requirements, otherwise, it may lead to fire disaster, electric shock or explosion.

Charger And Charging

- Only charger recommended by OEM can be used for models. Model do not include charger. Therefore, it is necessary to disconnect the model with charger before cleaning.
- Do not charge and use expanded, leaked or damaged batteries.
- Do not overcharge the batteries. After batteries are fully charged, please unplug the charger. Upon completion of charging, do not recharge the batteries to prevent from overheating.
- Do not charge the batteries near inflammables or on the surface of inflammables (e.g. carpet, wooden floor and solid wood furniture) or conductive objects. Pay attention to the batteries during charging.
- Do not charge the batteries immediately when it is still hot after usage.
- The temperature of batteries shall be between 0°C and 40°C.
- Do not unplug the charger when not charging.

Use and storage

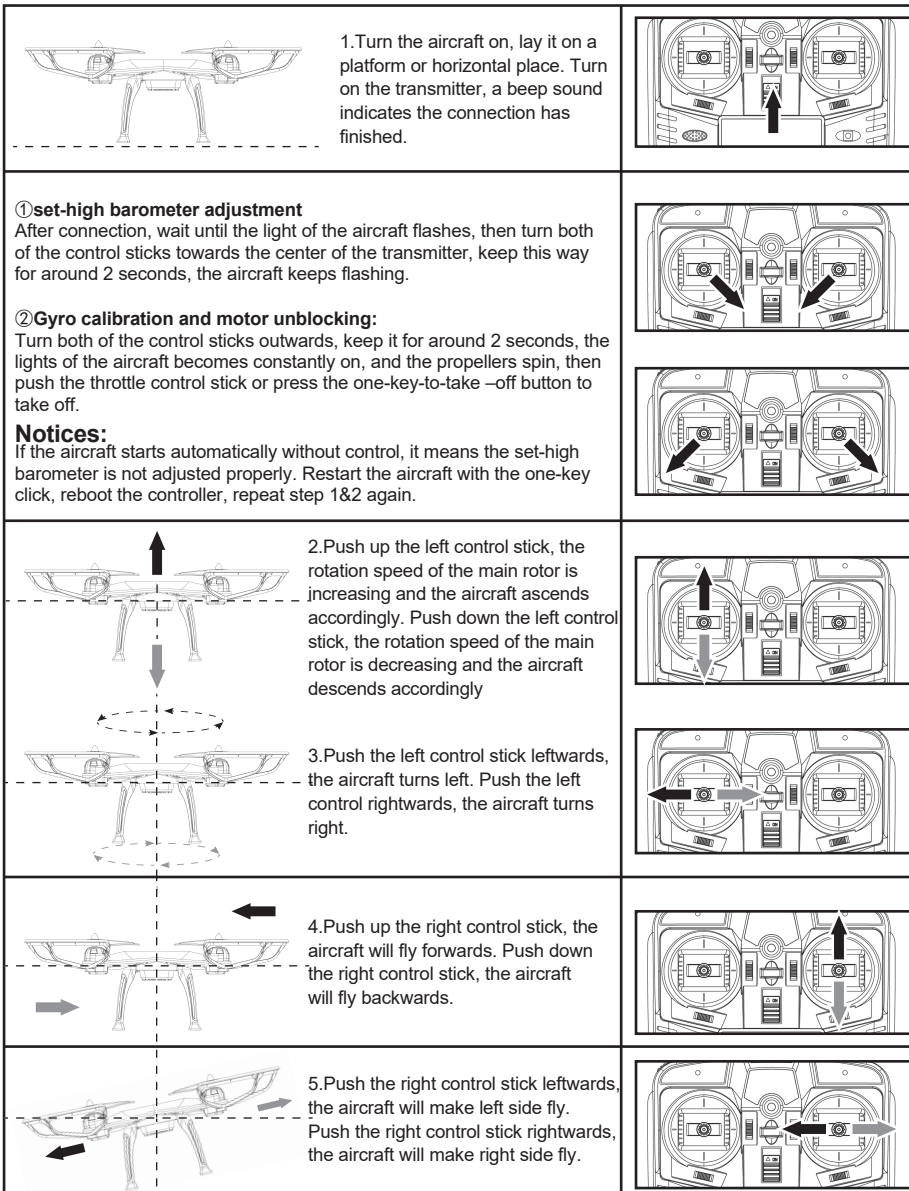
- Do not use batteries with broken plastic packages.
- After starting up the product, do not put in or take out the batteries.
- Excessive physical impact shall be avoided.
- Do not use expanded, leaked, damaged or smelly batteries.
- Keep batteries away from children.
- Never dispose of batteries in a fire and do not expose batteries to liquid, rain or moisture.
- Do not put batteries in microwave oven or pressure tank.
- Do not disassemble, drill, deform or cut the batteries. Batteries or chargers are not allowed to bear heavy load. Do not impact batteries.
- Do not clean the charger with solvent, industrial alcohol or other flammable solvent.
- Avoid short circuit. Avoid direct contacting with battery electrolyte, because the electrolyte and electrolyzed vapor are harmful to human body.
- Keep the product at room temperature instead of extreme temperature. Avoid major changes to temperature at the location of storing the products.
- Do not place the product near heat source.
- Take out batteries when not using the product.

Recycling

- Do not dispose the product as general waste. Damaged or unusable batteries shall be put into special containers for intended purposes.
- The product is composed of electronic element and batteries. For the waste electronic and electric equipment, it shall be disposed in accordance with special requirements.
- Please familiarize yourself with local waste centralized treatment methods.

-3-

Operation method

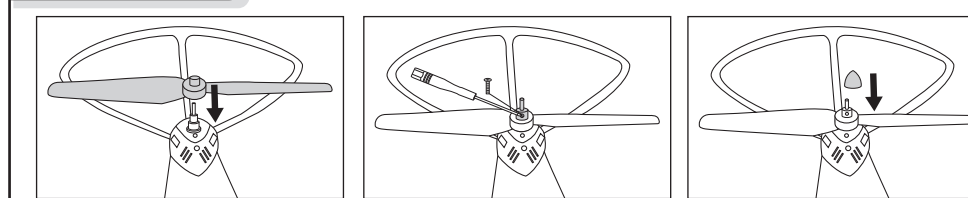


Special Tips: When the lights of the aircraft keeps flashing, it means it's going out of power, please fly it back to recharge.

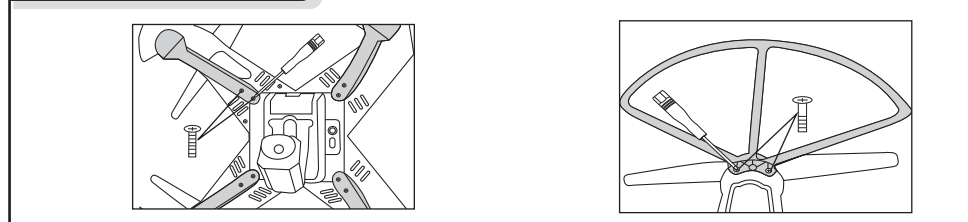
NOTE: When the aircraft is flying within 30cm above ground, it may easily fly unstably. This is what we call ground effect. The lighter the aircraft weights, the more seriously ground effect goes.

-4-

Install blades

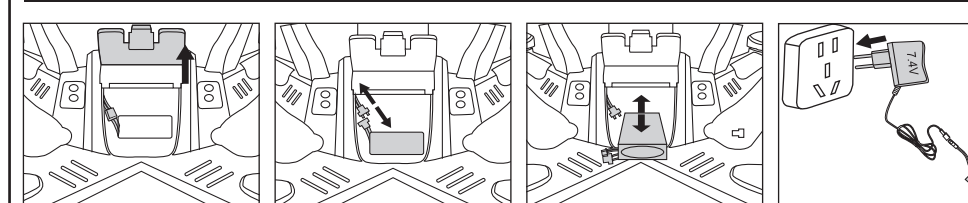


Install accessories

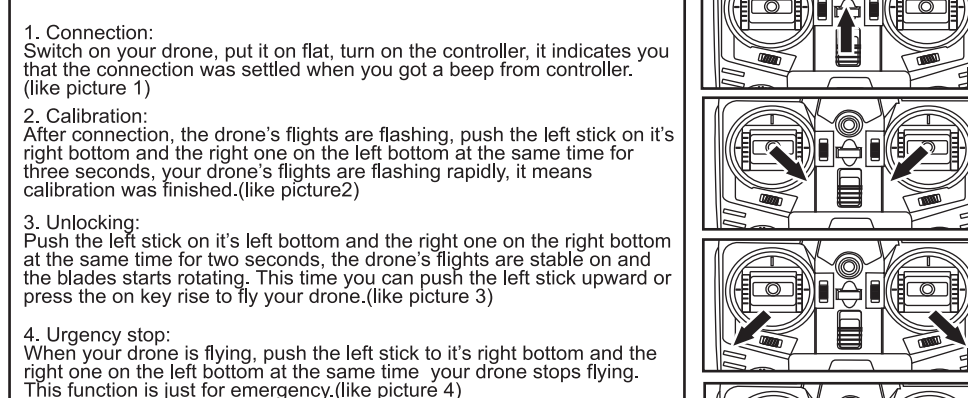


Charge battery

Note: It's required to use self-owned charger of this product for charging. Charging voltage of 7.4V abuse other chargers may pose a security risk.

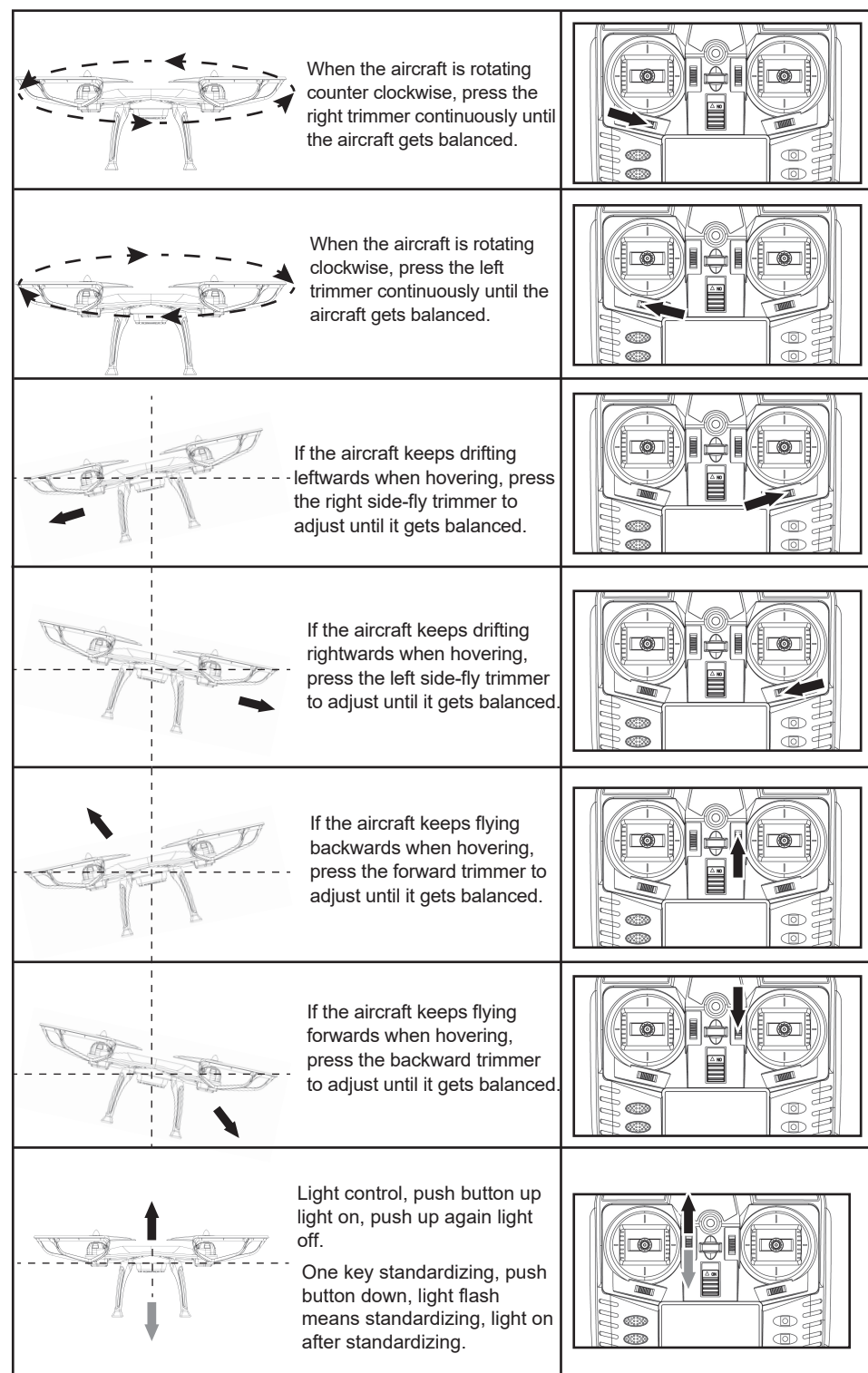


Preparation before taking off



Note: it is not advisable for flying under the situation of terrible weather or the wind speed is more 3 grades.

-5-



-6-

The drone has 4 speed modes, when you turn the speed switch:

- One beep means low speed.
- Two beeps mean middle speed.
- Three beeps mean high speed.
- Four beeps mean extremely high speed.

Under "FLIP MODE", when you make the right control stick:

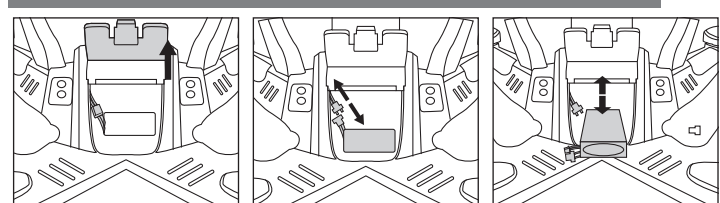
- push up-the drone flips forwards
- push down-the drone flips backwards
- push left-the drone flips leftwards
- push right-the drone flips rightwards

1. Press "TAKE OFF&LANDING" button 3 seconds until to hear beep after blades rotating, then don't press again, the drone takes off. When the drone is flying, press "AKE OFF&LANDING" button 1.5 seconds until to hear beep, then don't press again, the drone lands.
2. Press the "PHOTO" button to take picture.
3. Press the "VIDEO" button to take video, press it again to finish recording.

Charging batteries

Open the battery case according to the illustration picture, take out the power plug, then insert the charger into Li-Po battery. The red light will be on while charging, and be off when charging is finished. Charging time is 150 minutes.

Notices: Charged with distribution of DCH640 USB charger.

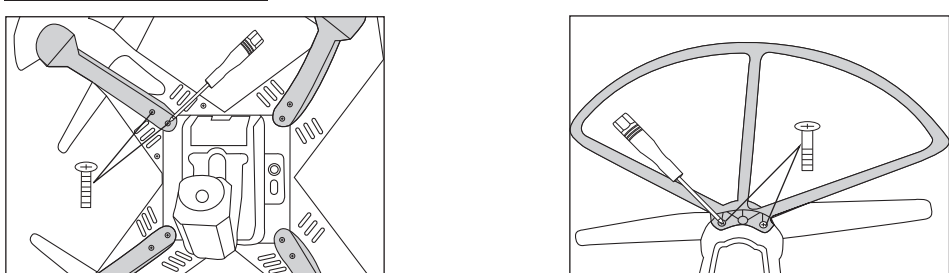


Caution

- Keep a suitable distance from the aircraft for safety.
- Do not look straightly to the lights, as the lights may generate laser radiation.
- If the transmitter or aircraft is lack of power, the control distance and height of flying will be affected.
- If the aircraft is broken, please repair it in time. Fly it with damaged propellers may bring serious hurt.
- Please put out the batteries to avoid battery leakage when you didn't use it in a long time.
- Do not let the aircraft fall without control especially at a high altitude, because it may get the aircraft damaged and even shorter its service life.

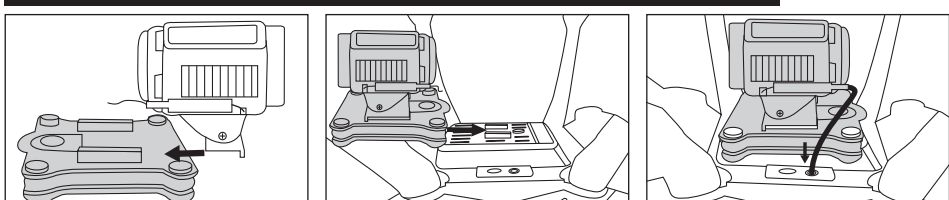
-7-

Parts installation



1. Tripod installation: Tighten The Screw As The Picture Show.
2. Propeller protector installation: Tighten the screw as the picture show.

Camera installation(Camera configuration is optional)



For camera module, install the anti-shaking frame first in steps as shown in figure above, then mount the camera together with anti-shaking frame onto battery rack before connecting power wire of camera.

Function overview of 30W camera

1. The module is in simplified version with optional MIC and remote shooting and video functions.
2. Photos are in JPEG format with resolution of 1280*960, while the video is in AVI format with resolution is 640*480 and frame rate of 60fps. Video data shall be saved in TF card with maximum memory of 32GB. When reading data, it is necessary to use card reader to read the TF card.
3. FCC-welding type is adopted with imported chip of 30W pixels, minimum illuminance of 1Lux, imaging lens size of 8.8MM and visual angle of 70c15 o.

Function overview of 200W camera

1. Video resolution: 1280*720P/30FPS, video pixels: 1280*720, light-sensitive chip of camera: 1/4 INCH HD COLOR CMOS
2. Lens size: 4P visual angle of 68o, image zone: 3864UM*2184UM, working voltage of camera module: DC2.5-5V
3. Power consumption of camera module: 220MA±10% (3.7V), working temperature: -5°C-55°C RH95%MAX
4. Storage temperature: -40°C-85°C RH95%MAX

Function overview of 500W camera

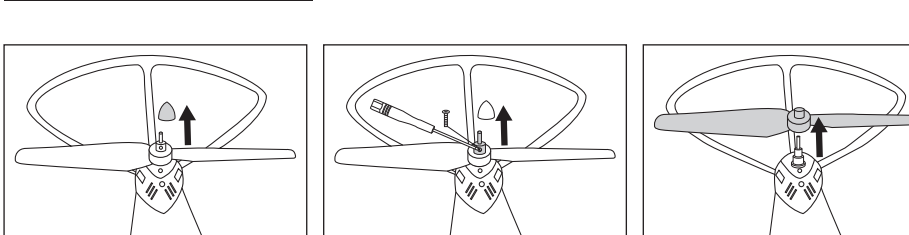
1. Video resolution: 1920*1080, video frame rate: 30 frames/s, photo resolution (optional): 2592*1944
2. Photo format: JPEG, video format: AVI
3. Working voltage: 3.7V-5.0V, withstanding voltage of triggering pin: 0V-3.3V
4. Low voltage standby current: 3.0V~160mA, low voltage working current: 3.6V~230mA
5. High voltage standby current: 5.0V~160mA, high voltage working current: 5.0V~190mA

Power supply and remote signal input

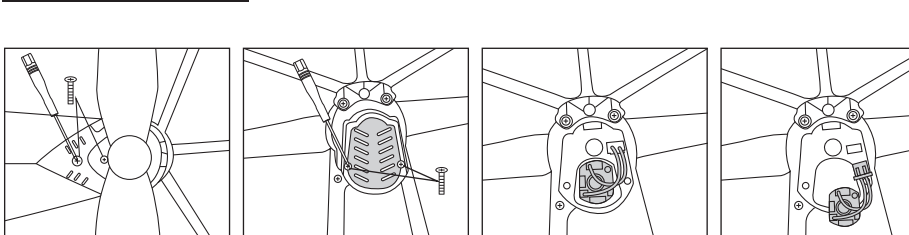
- The input and introduction of voltage, working current and remote signal of whole machine are as follows:
1. Starting up: the machine shall automatically start up after powering on. In case the red light is on first and then red & green lights blink for six times simultaneously, the machine shall shut down automatically, indicating that TF card is not detected or is full.
 2. Standby: the green light is on continuously.
 3. Video recording: after low level of VIDEO control wire triggers and starts up the video function, the red light shall flash; then low level shall trigger and exit VIDEO function while saving files and getting back to standby state, when the green light shall be on continuously.
 4. Photographing: after the low level of PHOTO control wire triggers photographing function, the green light shall be off with red light flashing once, indicating that three photos shall be taken and saved before getting back to standby state, when the green light shall be on.
 5. Input voltage: 3.7V-5.0V, standby current: $\leq 200-250mA$

-8-

Propeller Installation

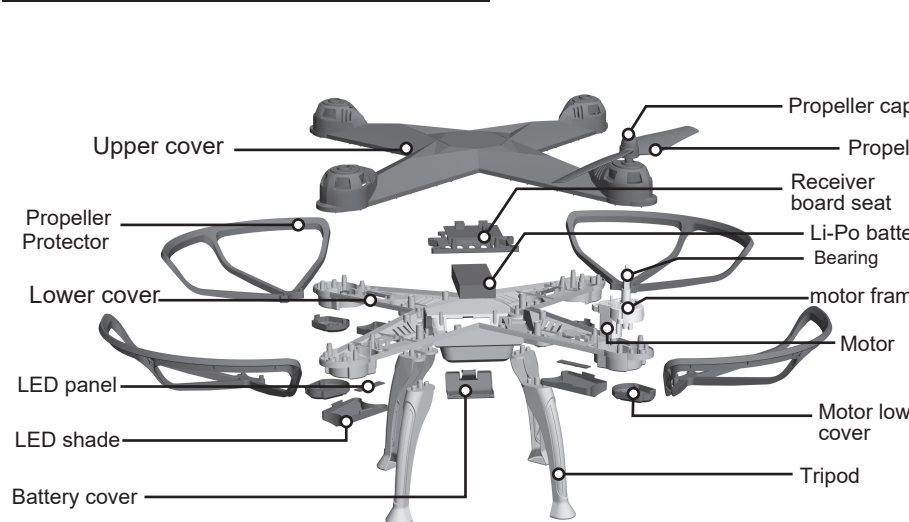


Motor Change



Loosen the screw on the upper cover, then loosen the screw on the lower cover, open the lid to change the motor.

Description of product parts



-9-

ALL RIGHTS RESERVED, COPYRIGHT DENVER ELECTRONICS A/S
Electric and electronic equipment and included batteries contains materials, components and substances that can be hazardous to your health and the environment, if the waste material (discarded electric and electronic equipment and batteries) is not handled correctly.

Electric and electronic equipment and batteries is marked with the crossed out trash can symbol, seen below. This symbol signifies that electric and electronic equipment and batteries should not be disposed of with other household waste, but should be disposed of separately.

As the end user it is important that you submit your used batteries to the appropriate and designated facility. In this manner you make sure that the batteries are recycled in accordance with legislature and will not harm the environment.

All cities have established collection points, where electric and electronic equipment and batteries can either be submitted free of charge at recycling stations and other collection sites, or be collected from the households. Additional information is available at the technical department of your city.

DENVER
www.denver-electronics.com



Imported by:
DENVER ELECTRONICS A/S
Omega 5A, Soefften
DK-8382 Hinnerup
Denmark
www.facebook.com/denverelectronics

Hereby, Inter Sales A/S declares that the radio equipment type DCH-640 is in compliance with Directive 2014/53/EU. The full text of the EU declaration of conformity is available at the following internet address: <http://www.denver-electronics.com/denver-dch-640/>

-10-