

名称： 说明书  
料号：  
尺寸： 130x90 mm  
材质： 80gA4纸质 黑白印

## MP3 PLAYER

AUX IN, FM Radio, RDS Control, USB & SD Slots | 4x50W

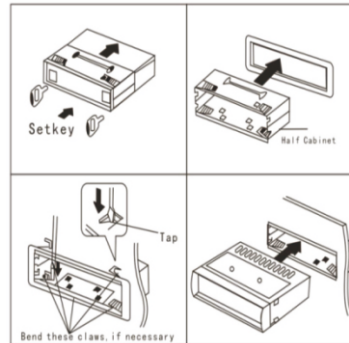


INSTRUCTION MANUAL

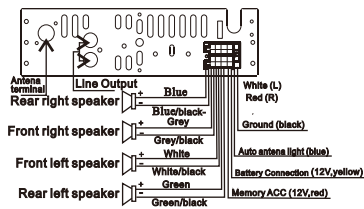


### Installation Precautions:

1. This unit should be installed by professional personnels, if possible.
2. Please refer to the instruction manual for electrical application, wrong operation will cause damage to the unit.
3. Apply the power cord after all connections of the unit are set.
4. Insulate all exposed wires to avoid short circuit.
5. All loosen wires shall be fixed after installation.
6. Read carefully for the application and operating instructions for each part before installation.
7. The unit is designed for 12-15V negative ground operation system only, make sure your vehicle is connected to such negative ground electrical system.
8. Be sure to connect the unit in exact according to the lead-diagram, otherwise malfunctions or damages may happen.



## Wiring Connections



1. This unit is applicable to 12V direct-current negative ground electrical system only.
2. In order to avoid short circuit, please disconnect the wire connecting terminal of the car storage battery before all applications of the unit are completed.
3. Please note that the yellow directing wire is connected to the anode terminal(+) or the BAT terminal.
4. Change the fuse, the specifications of the fuse for both the automobile and the unit shall be the same.
5. Excellent 4-8 ohm speaker is required for perfect performance.

## SPECIFICATIONS

### FM tuner

Frequency range:.....87.5-108MHz  
 Medium frequency:.....10.7MHz  $\pm$  0.3%  
 Signal/Noise ratio:.....50dB  
 Radio sensitivity: .....10dB

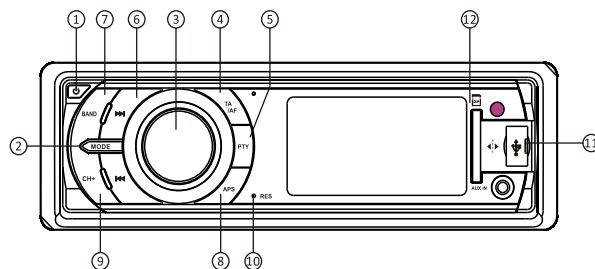
### USB/SD


Frequency response.....20Hz-20KHz  
 Signal/Noise ratio.....>50dB  
 Harmony distortion T.H.D.....<3%(1KHz)

### Others

MAX. Output power.....4x50W  
 Supply voltage.....12-15VDC negative ground  
 Speaker impedance.....4-8 ohm /ch  
 Dimensions.....177x115x50mm  
 Weight.....0.79kg

### Front Panel Controls and Functions



1.  button: Press it once for power on/ off.
2. MOD button: Press it to swift mode when power on among Radio, AUX IN USB ( if connected)
3. 1) Rotary Volume button, to adjust the volume.  
2) Multi function button  
\* Press the button to adjust the function below.  
Press it once for BAS.  
Press it twice for TRE.  
Press it a third time for Left and Right speaker balance BAL.  
Press it a forth time for front and rear speaker balance FAD.  
Press it a fifth time for VOL.

\* Hold the button first and then press it to adjust the functions below.

Hold it to show LOUD on/ off.

Continue to press it for DSP mode, turn it to show POP, ROCK, CLASSIC, FLAT.

Press it twice for DX, turn it for LOCAL.

Press it a third time for STEREO, turn it for MONO.

Press it a fourth time for TASEEK, turn it to show TA/ ALARM.

Press it a fifth time for RETURNL to enter ANS 90 seconds ( PI auto search mode), turn it to RETURNS to enter RDS 30 seconds auto search.

4. TA/ AF button: in radio mode, press it once to turn on/ off AF function.

Hold the button in radio mode, to turn on/ off TA function.

5. PTY button: press it to choose the functions of RDS mode.

- Press PTY once. LCD will show \* MUSIC\* . Operate circularly with CH+ button to select the following functions.

POP→ROCK M→EASY M→LIGHTM→CLASSICS→OTHER M→JAZZ→COUNTRY→NATION→  
OLDIES→FOLK M

Press PTY twice. LCD will show \* SPEECH\* . Operate circularly with CH+ button to select the following functions:

NEWS→AFFAIRS→INFO→SPORT→EDUCATE→DRAMA→CULTURE→SCIENCE→VARIED→  
WEATHER→FINANCE→CHILDREN→SOCIAL→RELIGION→PHONE IN→TRAVEL→LEISURE  
DOCUMENT.

6. **◀▶** button: in radio mode, hold it for manual station search, press it for automatic station search.  
When in playing mode, press it for the last or next track, hold it for fast forward and fast backward.
7. **BAND** button: In playing mode, press it to select the playing mode of INT, RPT, and RDM circularly.  
In radio mode, press it for band switch
8. **APS** button: In playing mode, press it for track selection with button 3.  
In Radio mode, Press it for stations scan. Hold it for auto station search and storage.
9. **CH+** button: In playing mode, press it to pause or to resume it. Hold it to play the track of the next folder.  
In radio mode, press it to select stations. Hold it to memorize the present station under the selected number 1-6(When you hold on CH+, the station will flash, then press CH+ to select the number you like. Wait for 5 seconds, the station is memorized automatically.
10. **RESET** button: press \* reset \* button to reset to original state, \* factory default \* , if the head unit is not working normally.
- 11 Port USB: use USB alone, do not insert a memory card at the same time.
- 12 Memory Card: Digital radio can support cards memory with a storage capacity up to 16 GB. The use memory card with a capacity higher can damage the unit.

### **WARNINGS:**

\*SHOULD POWER LINE ( YELLOW ONE ) BE GROUNDED OR WRONGLY CONNECTED,  
THE WHOLE UNIT WOULD BURN OUT OR FAIL TO TURN ON OR LIGHT OUT.

\*SHOULD MEMORY LINE ( RED ONE ) BE WRONGLY CONNECTED, THE WHOLE UNIT  
WOULD BURN OUT OR FAIL TO TURN ON OR LIGHT OUT.

\*THE SPEAKERS SHOULD BE CORRECTLY WIRED, OTHERWISE, THE SPEAKER AND  
THE AMPLIFIER IC WOULD BURN OUT OR BE SOUNDLESS.